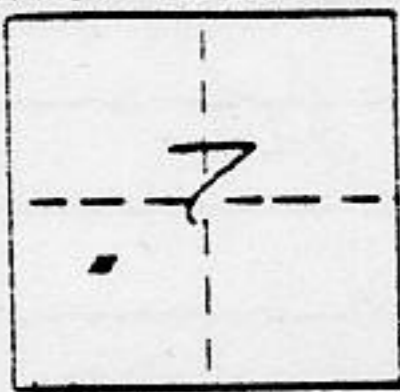


CORNER RECORD

COUNTY OF PLACER T. 14N R. 17E M.D. MERIDIAN CALIFORNIA

CORNER TYPE: GOV'T. CORNER MEANDER RANCHO CONTROL OTHER
 CORNER IDENTIFICATION - DATE OF VISIT APRIL 19 88



LOT 32, MCKINNEY SHORES

CORNER - LEFT AS FOUND FOUND AND TAGGED REESTABLISHED OBLITERATED CORNER REBUILT

PHYSICAL DESCRIPTION OF CORNER FOUND: EVIDENCE AND METHOD USED TO IDENTIFY OR REESTABLISH _____

○ ~ FOUND 1/2" Ø REBAR, NO TAG, UNLESS OTHERWISE NOTED, AS PER THAT MAP OF MCKINNEY SHORES FILED IN BOOK "G" OF MAPS AT PAGE 25, PLACER COUNTY, CALIFORNIA RECORDS.

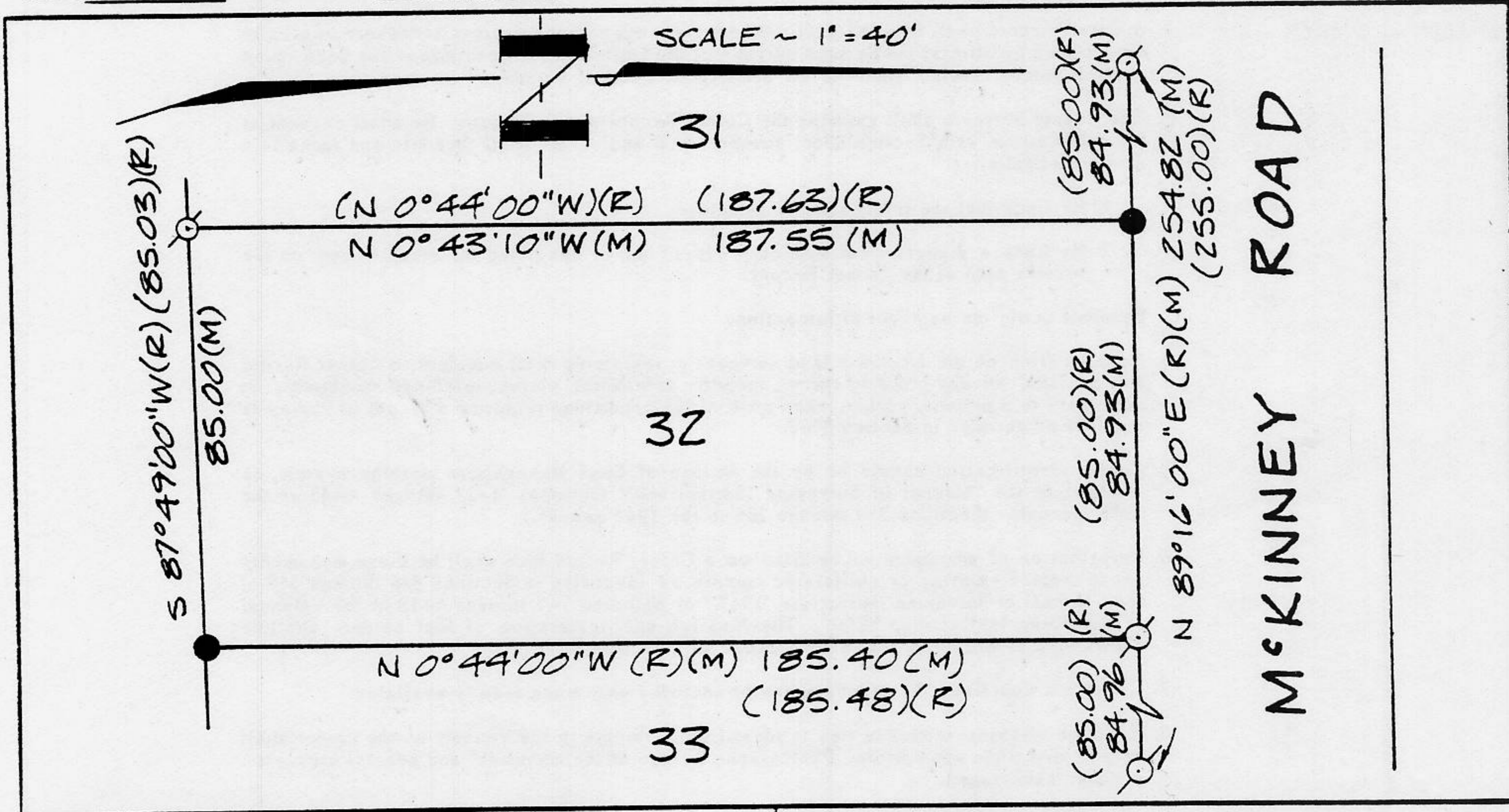
PHYSICAL DESCRIPTION OF MONUMENTS REBUILT OR PERPETUATED _____

● ~ SET 5/8" Ø REBAR WITH PLASTIC CAP L.S. 3422

(M) ~ MEASURED

(R) ~ RECORD AS PER G MAPS 25

CALIFORNIA COORDINATE SYSTEM ORDER: FIRST SECOND THIRD N/A
 STATIONS USED: NGS (USC & GS) STATE COUNTY OTHER STATION _____ STATION _____
 ZONE _____ ELEVATION _____ NORTHINGS (Y) _____ EASTINGS (X) _____



SURVEYOR'S CERTIFICATE

THIS CORNER RECORD WAS PREPARED BY ME OR UNDER MY DIRECTION IN CONFORMANCE WITH THE LAND SURVEYORS ACT ON MAY 3 1988

SIGNED: _____

L.S. or R.C.E. No. _____



COUNTY SURVEYOR'S CERTIFICATE

THIS CORNER RECORD WAS RECEIVED December 18 1991 AND EXAMINED AND FILED December 23 1991
 BY: Dani L. M. Daniel
 TITLE: DEPUTY COUNTY SURVEYOR

DOCUMENT No. _____
 STATEMENT ON BACK OF SHEET

YES NO

J/N 256.00

Book 2, Corner Records, Page 107