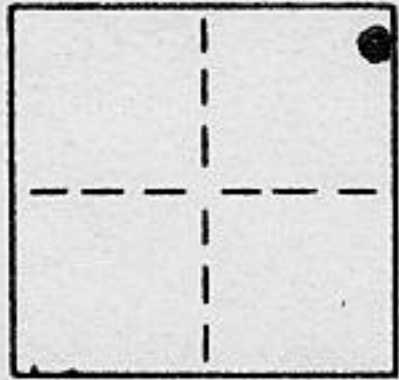


**CORNER RECORD**

COUNTY OF PLACER T. 15N. R. 16E. M.D.M. MERIDIAN CALIFORNIA

CORNER TYPE: GOV'T. CORNER  MEANDER  RANCHO  CONTROL  OTHER   
 CORNER IDENTIFICATION - DATE OF VISIT 4-23 1988



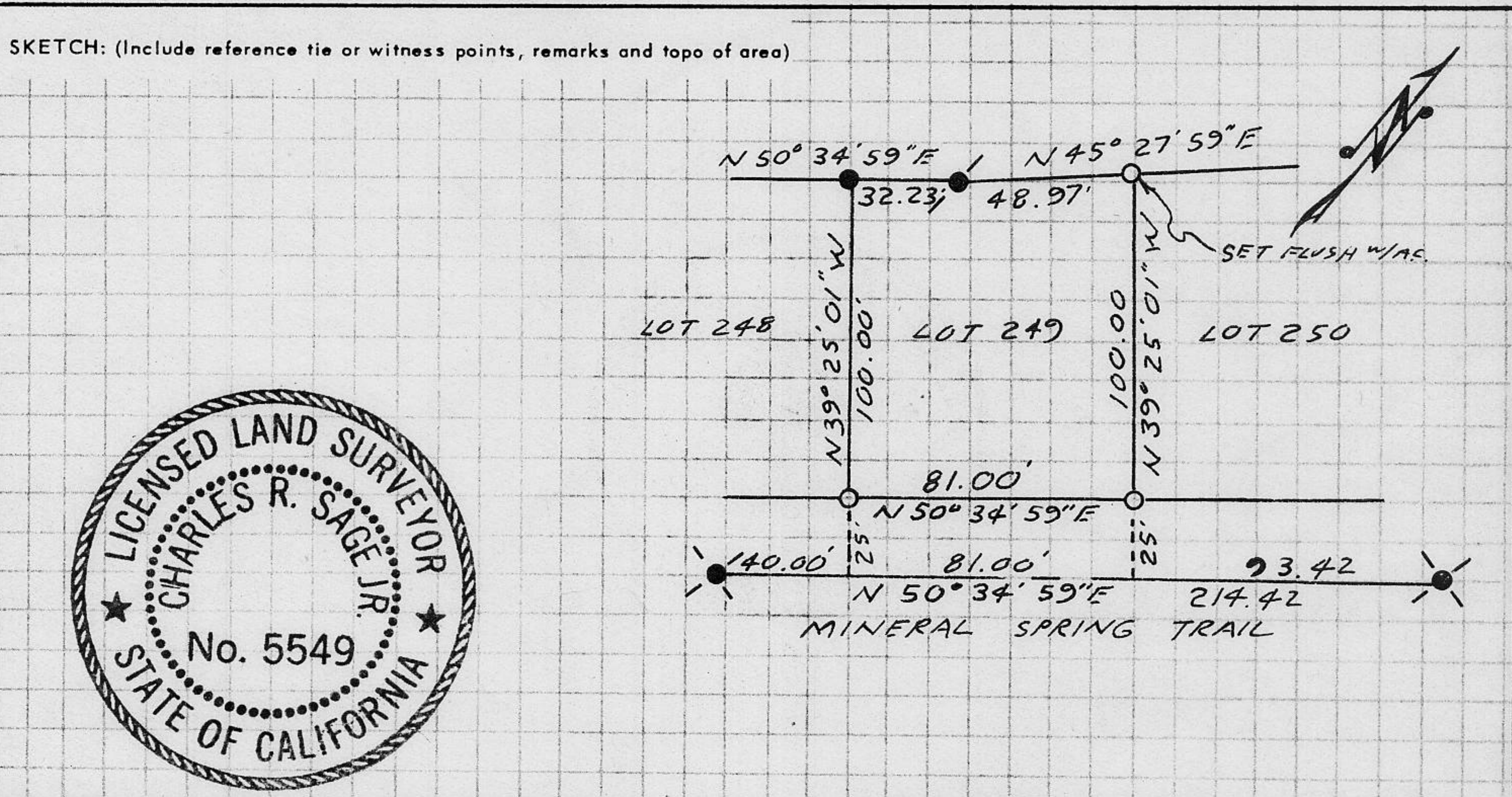
LOT 249 ALPINE MEADOWS ESTATES SUB. UNIT NO. 8  
BK "I" MAPS PG 53

CORNER - LEFT AS FOUND  FOUND AND TAGGED  REESTABLISHED OBLITERATED CORNER  REBUILT

PHYSICAL DESCRIPTION OF CORNER FOUND: EVIDENCE AND METHOD USED TO IDENTIFY OR REESTABLISH \_\_\_\_\_  
 ● = FOUND RAILROAD SPIKE SET FLUSH W/ A.C.  
 ● = FOUND 5/8" REBAR W/ PLASTIC CAP STAMPED R.C.E. 32239 SET FLUSH W/ GROUND  
 -●- = FOUND 1/2" REBAR, NO REFERENCE; SET PLASTIC CAP STAMPED L.S. 5549

PHYSICAL DESCRIPTION OF MONUMENTS REBUILT OR PERPETUATED \_\_\_\_\_  
 ○ = SET 3/4" IRON PIPE W/ PLASTIC PLUG L.S. 5549 FLUSH W/ GROUND

CALIFORNIA COORDINATE SYSTEM ORDER: FIRST  SECOND  THIRD   
 STATIONS USED: NGS (USC & GS)  STATE  COUNTY  OTHER  STATION \_\_\_\_\_ STATION \_\_\_\_\_  
 ZONE \_\_\_\_\_ ELEVATION \_\_\_\_\_ NORTHINGS (Y) \_\_\_\_\_ EASTINGS (X) \_\_\_\_\_



**SURVEYOR'S CERTIFICATE**

THIS CORNER RECORD WAS PREPARED BY ME OR UNDER MY DIRECTION IN CONFORMANCE WITH THE LAND SURVEYORS ACT ON 4-23 1988  
 SIGNED: Charles R. Sage Jr.  
 L.S. or R.C.E. No.: L.S. 5549 EXP. 6-3-89  
 SEAL

**COUNTY SURVEYOR'S CERTIFICATE**

THIS CORNER RECORD WAS RECEIVED FEBRUARY 19 1990 AND EXAMINED AND FILED JANUARY 9 1992  
 BY: Brian J. McDaniel  
 TITLE: DEPUTY COUNTY SURVEYOR  
 DOCUMENT No. \_\_\_\_\_  
 STATEMENT ON BACK OF SHEET YES  NO

Book 2, Corner Records, Page 111