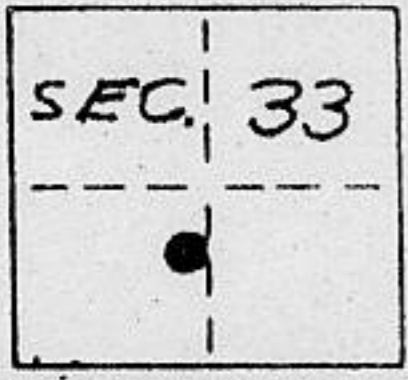


**CORNER RECORD**

COUNTY OF PLACER T. 16N. R. 17E. M.D. MERIDIAN CALIFORNIA

CORNER TYPE: GOV'T. CORNER  MEANDER  RANCHO  CONTROL  OTHER   
 CORNER IDENTIFICATION - DATE OF VISIT 11-3 1988



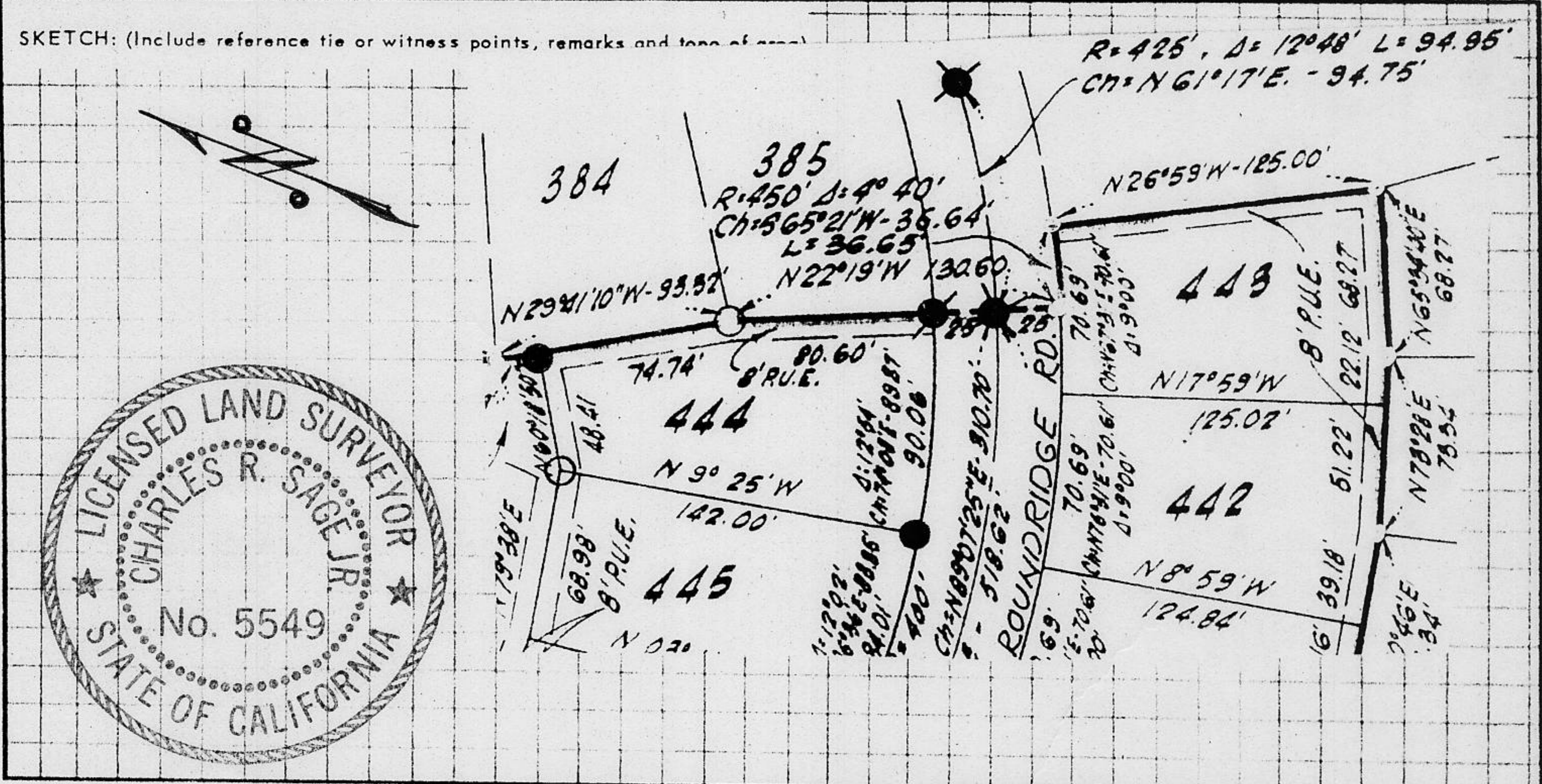
LOT 444 DOLLAR POINT UNIT 7  
BOOK I OF MAPS PAGE 41

CORNER - LEFT AS FOUND  FOUND AND TAGGED  REESTABLISHED OBLITERATED CORNER  REBUILT

PHYSICAL DESCRIPTION OF CORNER FOUND: EVIDENCE AND METHOD USED TO IDENTIFY OR REESTABLISH  
 ● = FOUND BOLT AND WASHER PER I OF MAPS PAGE 41  
 ● = FOUND 3/4" IRON PIN " " " " "  
 ● = FOUND 1/2" IRON PIN " " " " "

PHYSICAL DESCRIPTION OF MONUMENTS REBUILT OR PERPETUATED  
 ○ = SET 3/4" IRON PIPE W/ PLASTIC PLUG STAMPED L.S. 5549

CALIFORNIA COORDINATE SYSTEM ORDER: FIRST  SECOND  THIRD   
 STATIONS USED: NGS (USC & GS)  STATE  COUNTY  OTHER  STATION \_\_\_\_\_ STATION \_\_\_\_\_  
 ZONE \_\_\_\_\_ ELEVATION \_\_\_\_\_ NORTHINGS (Y) \_\_\_\_\_ EASTINGS (X) \_\_\_\_\_



**SURVEYOR'S CERTIFICATE**  
 THIS CORNER RECORD WAS PREPARED BY ME OR UNDER MY DIRECTION IN CONFORMANCE WITH THE LAND SURVEYORS ACT ON NOV. 14 1988  
 SIGNED: Charles R. Sage, Jr.  
 L.S. or R.C.E. No.: L.S. 5549 EXP. 6-30-90  
 SEAL

**COUNTY SURVEYOR'S CERTIFICATE**  
 THIS CORNER RECORD WAS RECEIVED FEBRUARY 19 1990  
 AND EXAMINED AND FILED 1/91 1992  
 BY: Bruce L. McDaniel  
 TITLE: DEPUTY COUNTY SURVEYOR  
 DOCUMENT No. \_\_\_\_\_  
 STATEMENT ON BACK OF SHEET

YES  NO

BOOK 2, CORNER RECORDS, PAGE 112