

(For County Use Only)

### CORNER RECORD

COUNTY OF PLACER T. 14N R. 12E MDBE MERIDIAN CALIFORNIA

CORNER TYPE: GOV'T. CORNER  MEANDER  RANCHO  CONTROL  OTHER

CORNER IDENTIFICATION — DATE OF VISIT MARCH 30 1992

SET 1 INCH IRON PIPE WITH LS 3622 PLUG SEE BELOW)



CORNER — LEFT AS FOUND  FOUND AND TAGGED  REESTABLISHED OBLITERATED CORNER  REBUILT

PHYSICAL DESCRIPTION OF CORNER FOUND; EVIDENCE AND METHOD USED TO IDENTIFY OR REESTABLISH

FOUND A 26X18X8 INCH STONE IN A MOUND OF STONE. AREA OF FOUND CORNER WAS ASCERTAINED BY COMPASS LINES FROM CORNERS TO THE NORTH, SOUTH & EAST. A DILIGENT SEARCH WITHIN A 700 FT RADIUS REVEALED NOTHING OF SIGNIFICANCE.

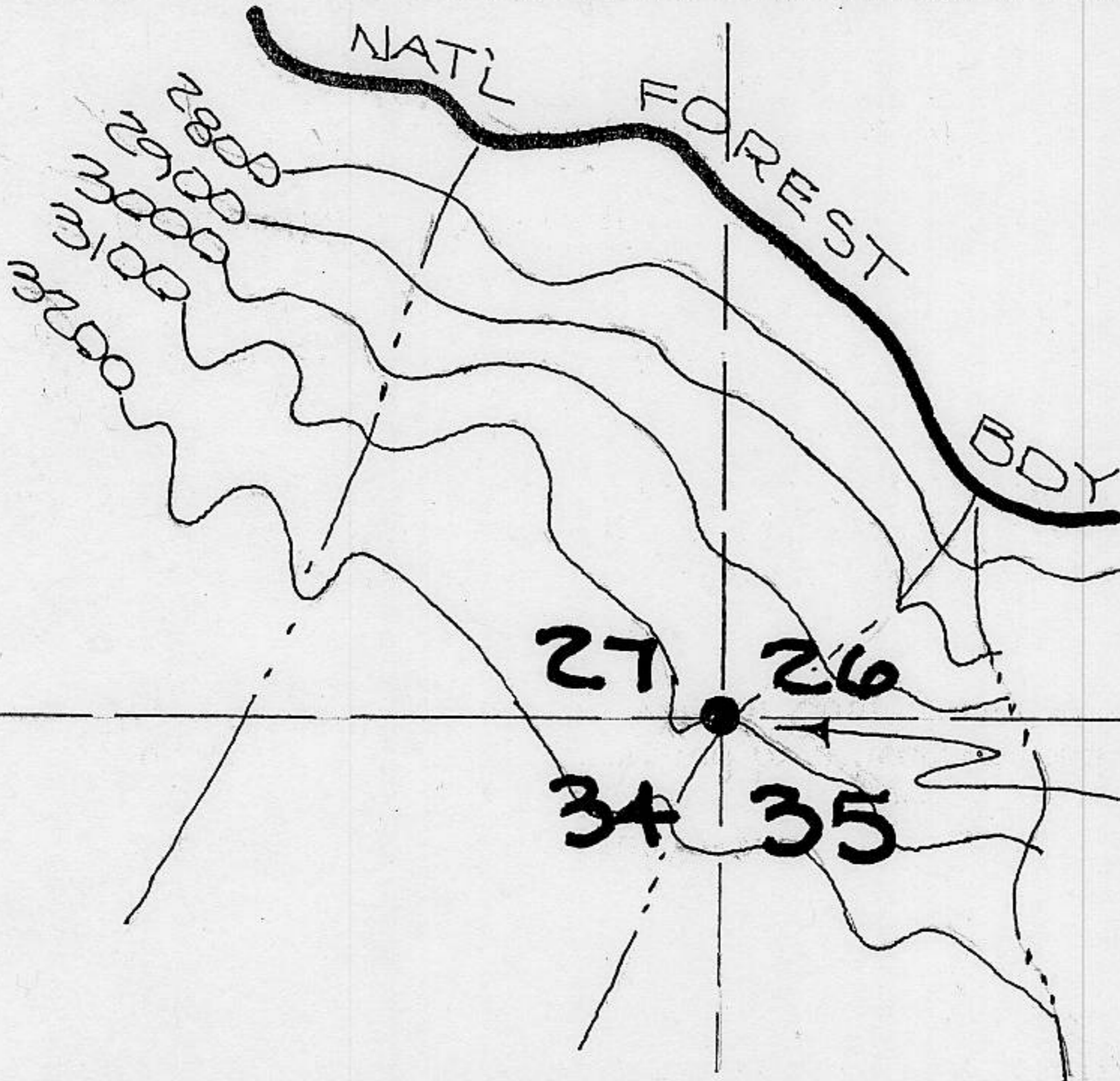
PHYSICAL DESCRIPTION OF MONUMENTS REBUILT OR PERPETUATED

SET A 1 INCH X 18 INCH IRON PIPE WITH AN LS 3622 PLUG IN A 2 FT BY 3 FT MOUND OF STONE. ORIGINAL 26X18X8 INCH STONE FRAGMENTED DURING REBUILDING OF STONE MOUND.

CALIFORNIA COORDINATE SYSTEM ORDER: FIRST  SECOND  THIRD   
STATIONS USED: NGS (USC & GS)  STATE  COUNTY  OTHER  STATION \_\_\_\_\_ STATION \_\_\_\_\_  
ZONE \_\_\_\_\_ ELEVATION \_\_\_\_\_ NORTHING (Y) \_\_\_\_\_ EASTINGS (X) \_\_\_\_\_

(Fold)

SKETCH: (Include reference tie or witness points, remarks and topo of area)

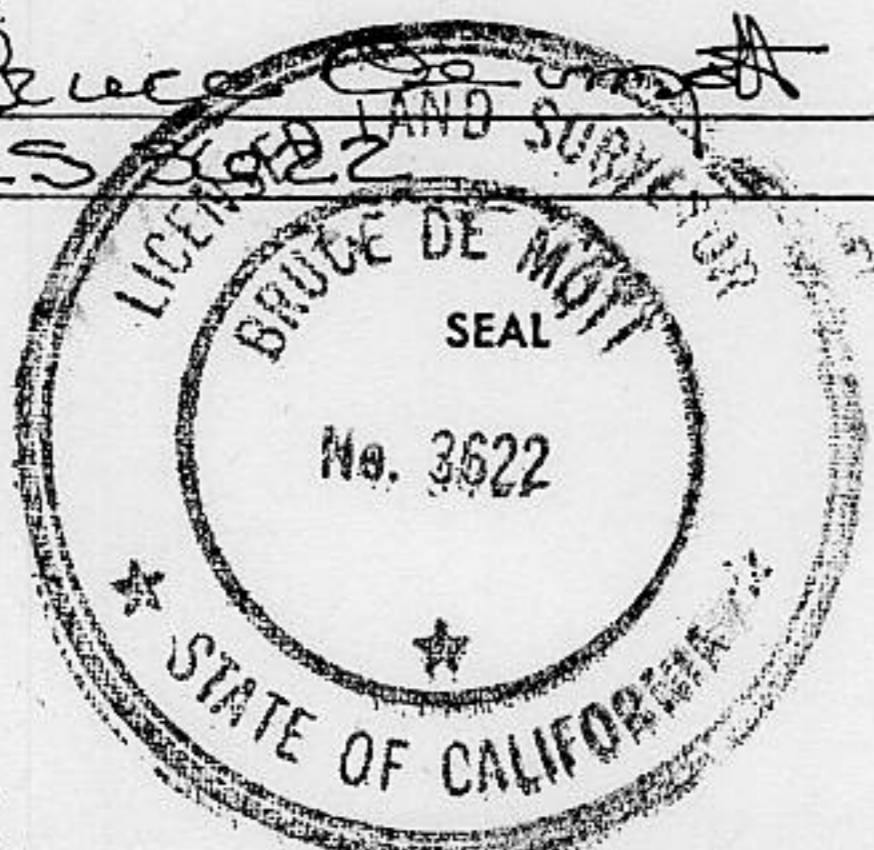


SET 1 INCH IRON PIPE WITH PLASTIC PLUG STAMPED LS 3622. (SEE DESCRIPTION ABOVE)

SURVEYOR'S CERTIFICATE

THIS CORNER RECORD WAS PREPARED BY ME OR UNDER MY DIRECTION IN CONFORMANCE WITH THE LAND SURVEYORS ACT ON MAY 16 1992

SIGNED: [Signature]  
L.S. or R.C.E. No.: LS 3622



COUNTY SURVEYOR'S CERTIFICATE

THE CORNER RECORD WAS RECEIVED 5/20 1992  
AND EXAMINED AND FILED 5/22 1992

BY: [Signature]  
TITLE: DEPUTY COUNTY SURVEYOR

DOCUMENT No. \_\_\_\_\_

STATEMENT ON BACK OF SHEET

YES  NO

Book 2, Corner Records, Page 126