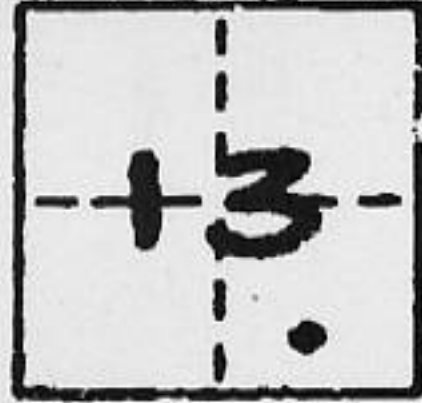


CORNER RECORD

COUNTY OF PLACER T. 15N R. 16E M.P. _____ MERIDIAN CALIFORNIA

CORNER TYPE: GOV'T. CORNER MEANDER RANCHO CONTROL OTHER

CORNER IDENTIFICATION - DATE OF VISIT MAY 19TH 1992



LOTS 7, 8, 9, & 10 PER AMENDED MAP LAKE TAHOE PARK

CORNER - LEFT AS FOUND FOUND AND TAGGED REESTABLISHED OBLITERATED CORNER REBUILT

PHYSICAL DESCRIPTION OF CORNER FOUND: EVIDENCE AND METHOD USED TO IDENTIFY OR REESTABLISH _____

● ~ FOUND 1/2" & REBAR, NO TAG, UNLESS OTHERWISE NOTED.

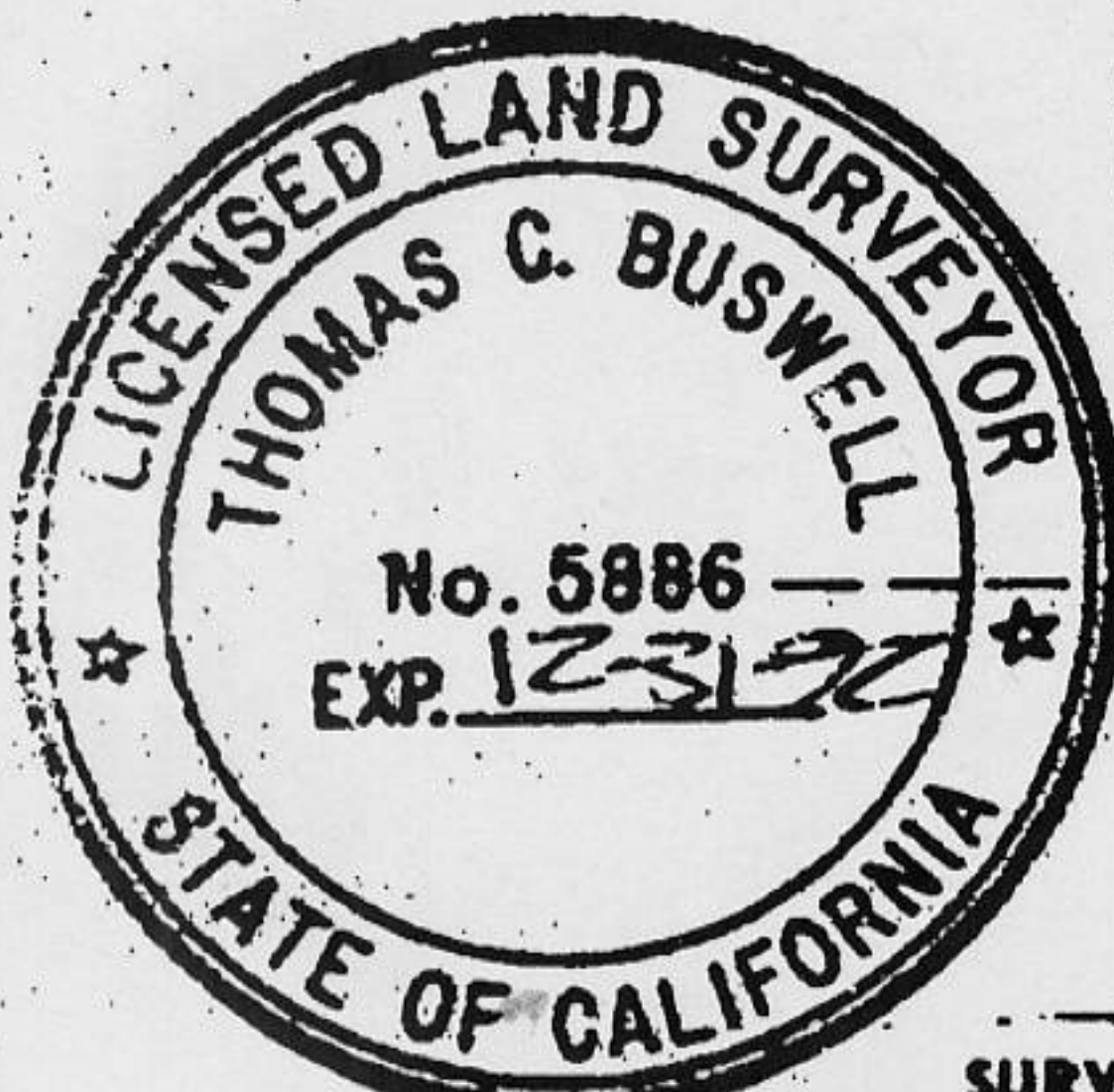
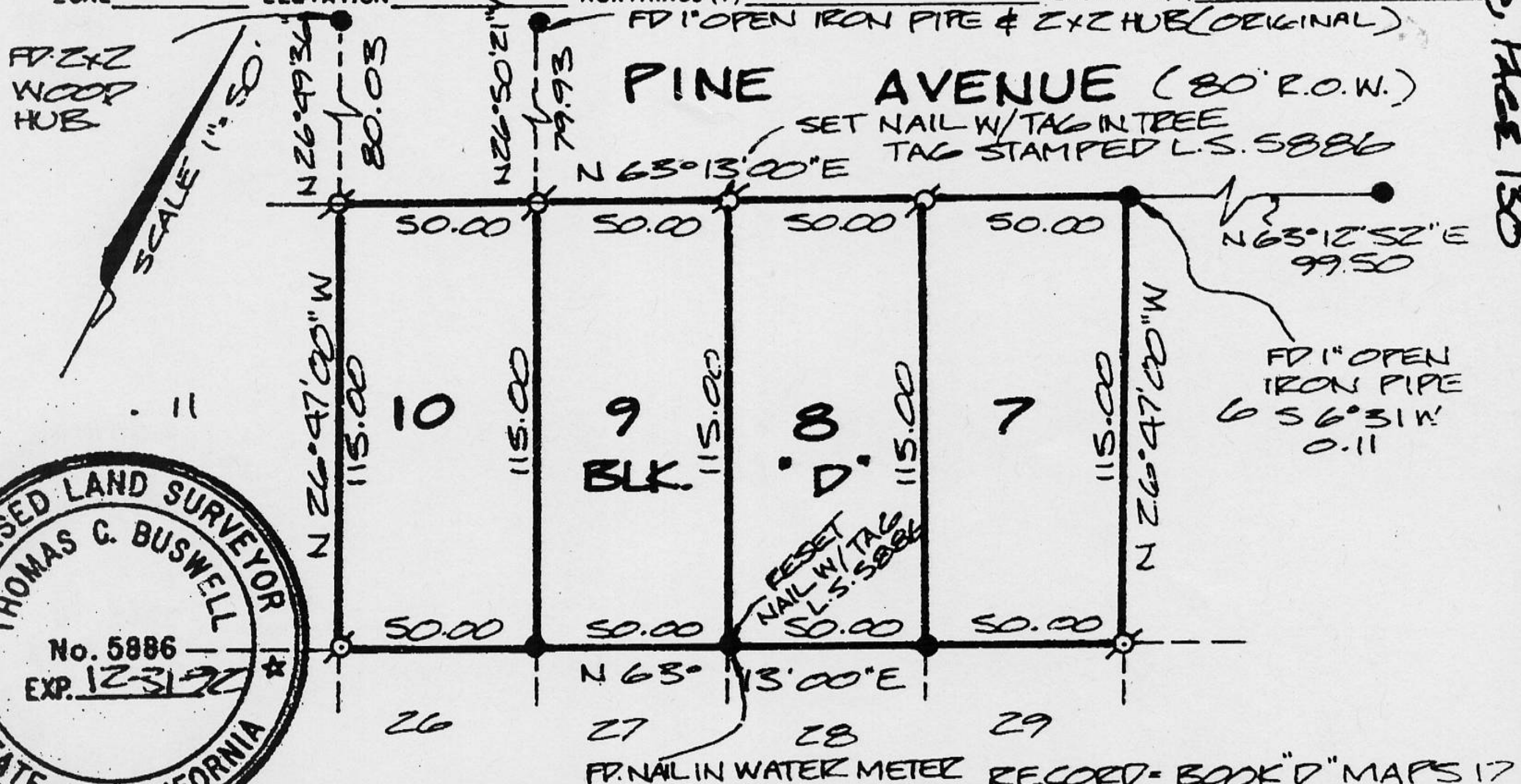
PHYSICAL DESCRIPTION OF MONUMENTS REBUILT OR PERPETUATED _____

SET 5/8" REBAR WITH 2" & ALUMINUM CAP STAMPED
"THOMAS C. BUSWELL, PLS 5886, UNLESS OTHERWISE NOTED.

CALIFORNIA COORDINATE SYSTEM ORDER: FIRST SECOND THIRD NOT APPLICABLE

STATIONS USED: NGS (USC & GS) STATE COUNTY OTHER STATION _____ STATION _____

ZONE _____ ELEVATION _____ NORTHINGS (Y) _____ EASTINGS (X) _____



SURVEYOR'S CERTIFICATE

THIS CORNER RECORD WAS PREPARED BY ME OR UNDER MY DIRECTION IN CONFORMANCE WITH THE LAND SURVEYORS ACT ON MAY 20TH 1992

SIGNED: [Signature]

L.S. or R.C.E. No.: 5886

SEAL

COUNTY SURVEYOR'S CERTIFICATE

THIS CORNER RECORD WAS RECEIVED 5/26 1992 AND EXAMINED AND FILED 6/4 1992

BY: [Signature]
TITLE: DEPUTY COUNTY SURVEYOR

DOCUMENT No. _____

STATEMENT ON BACK OF SHEET

YES NO

Book 2, Corner Records, Page 130