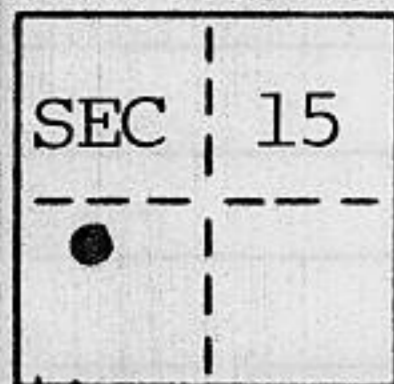


CORNER RECORD

COUNTY OF PLACER T. 15 N. R. 16 E. M.D. _____ MERIDIAN CALIFORNIA

CORNER TYPE: GOV'T. CORNER MEANDER RANCHO CONTROL OTHER
 CORNER IDENTIFICATION - DATE OF VISIT May 14, 1991



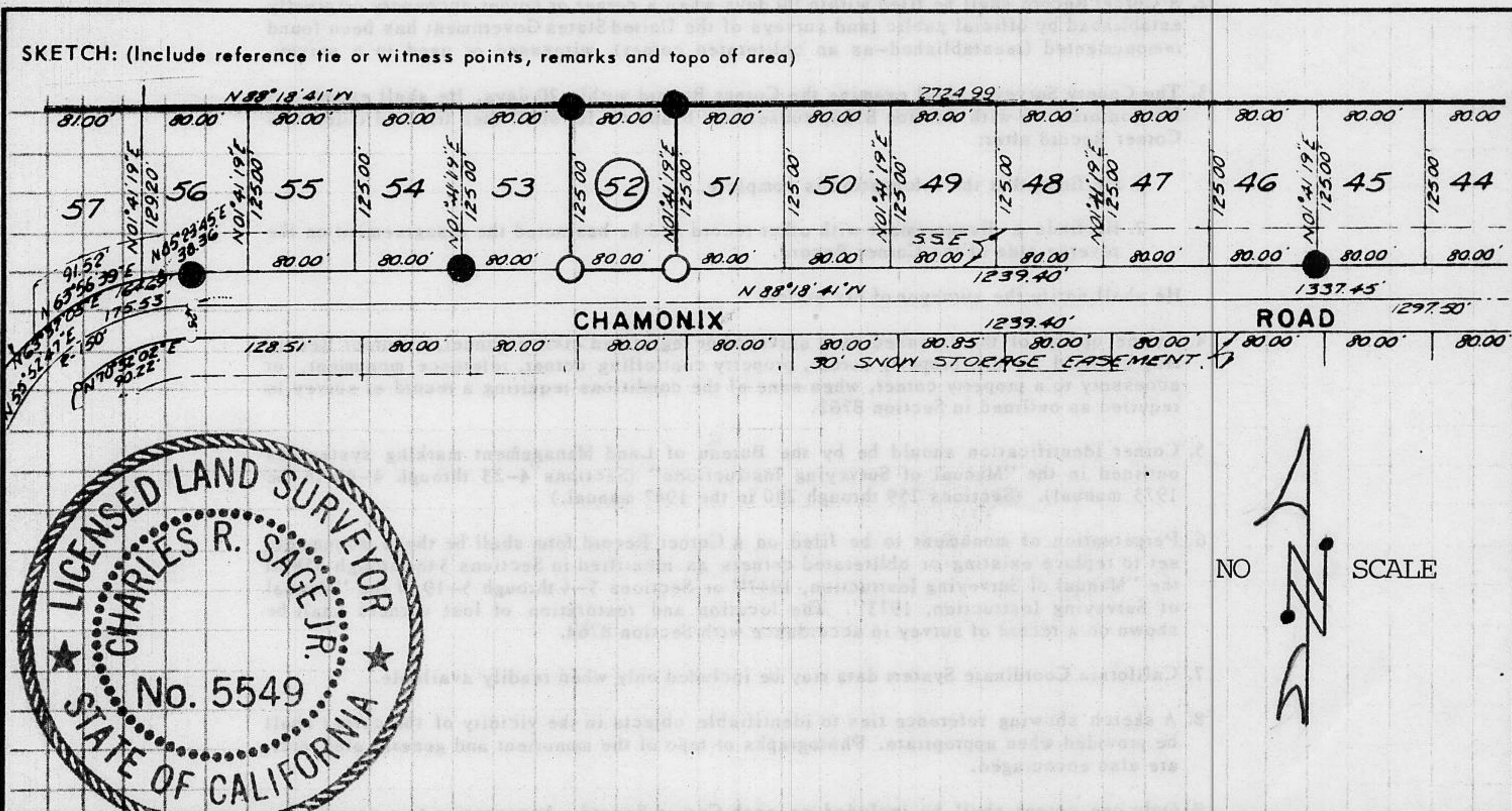
LOT 52 ALPINE PEAKS UNIT NO. 1
 BOOK "I" OF MAPS AT PAGE 61

CORNER - LEFT AS FOUND FOUND AND TAGGED REESTABLISHED OBLITERATED CORNER REBUILT

PHYSICAL DESCRIPTION OF CORNER FOUND: EVIDENCE AND METHOD USED TO IDENTIFY OR REESTABLISH
 ● FOUND 3/4" REBAR WITH TAG STAMPED R.C.E. 9033

PHYSICAL DESCRIPTION OF MONUMENTS REBUILT OR PERPETUATED
 ○ SET 3/4" IRON PIPE WITH PLASTIC PLUG STAMPED L.S. 5549

CALIFORNIA COORDINATE SYSTEM ORDER: FIRST SECOND THIRD
 STATIONS USED: NGS (USC & GS) STATE COUNTY OTHER STATION _____ STATION _____
 ZONE _____ ELEVATION _____ NORTHINGS (Y) _____ EASTINGS (X) _____



JN: 9161 SURVEYOR'S CERTIFICATE
 THIS CORNER RECORD WAS PREPARED BY ME OR UNDER MY DIRECTION IN CONFORMANCE WITH THE LAND SURVEYORS ACT ON MAY 20 1991
 SIGNED: Charles R. Sage Jr.
 L.S. or R.C.E. No.: L.S. 5549 expires 06/30/93
 SEAL

COUNTY SURVEYOR'S CERTIFICATE
 THIS CORNER RECORD WAS RECEIVED 12/15 1991 AND EXAMINED AND FILED 6/5 1992
 BY: Bruce J. McDaniel
 TITLE: DEPUTY COUNTY SURVEYOR
 DOCUMENT No. _____
 STATEMENT ON BACK OF SHEET YES NO

Book 2, CORNER RECORDS, PAGE 140