

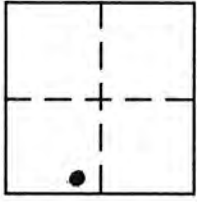
CORNER RECORD

COUNTY OF PLACER, CALIFORNIA

City of UNINCORPORATED AREA

Document Number 20150065

Brief Legal Description LOT 4 PONDEROSA PALISADES WEST  
BOOK "J" OF MAPS PAGE 49 P.C.O.R.



SEC. 15  
T. 17 N.  
R. 16 E.  
M.D.M.

CORNER TYPE

- Government Corner
- Meander
- Rancho
- Date of Survey 8/11/15
- Control
- Property
- Other

COORDINATES (Optional)

N. \_\_\_\_\_  
E. \_\_\_\_\_  
Zone \_\_\_\_\_ Datum \_\_\_\_\_  
Elev. \_\_\_\_\_

Corner — Left as found  Found and tagged  Established  Reestablished  Rebuilt

Identification and type of corner found: Evidence used to identify or procedure used to establish or reestablish corner:

● = FOUND 5/8" REBAR w/ PLASTIC CAP L.S. 3332 BELIEVE TO BE ORIGINAL PER "J"/MAPS/49 P.C.O.R.

● = FOUND 3/4" IRON PIPE w/ PLASTIC PLUG L.S. 5549 PER 6/CR/35

A description of the physical condition of the monument as found and as set or reset:

○ = SET BATHY MONUMENT (T-BAR) w/ NAIL TAG P.L.S. 8628

JN: 15072

SURVEYOR'S STATEMENT

This Corner Record was prepared by me or under my direction in conformance with the Land

Surveyors' Act on AUGUST 25 2015.

Signed J Kurt Margraf (L.S.) or R.C.E. Number 8628  
LIC. EXPIRES 12/31/15



COUNTY SURVEYOR'S STATEMENT

This Corner Record was received \_\_\_\_\_ 20 \_\_\_\_\_ and examined

and filed November 10, 2015 20 \_\_\_\_\_.

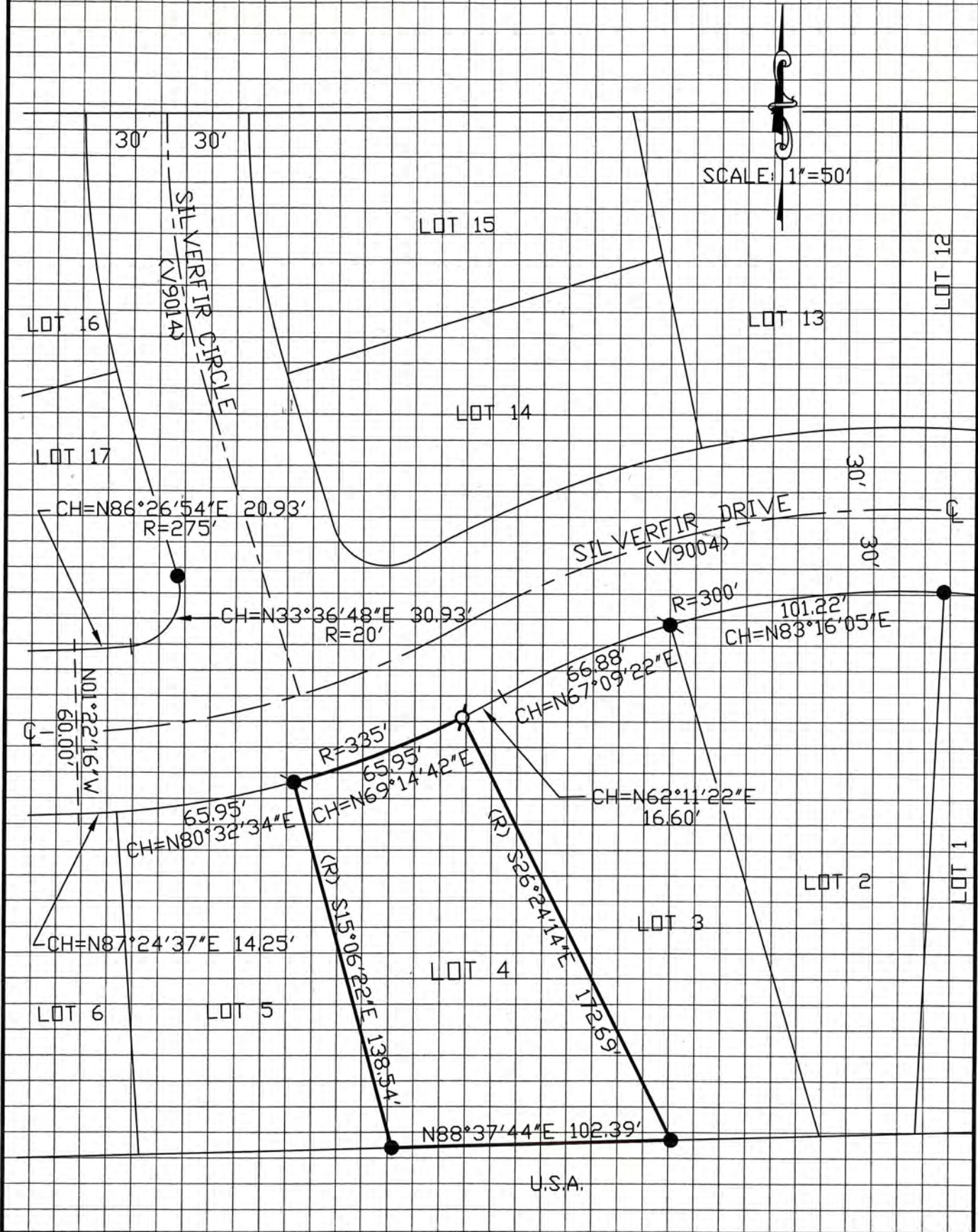
Signed Leslie Kinsberg Title County Surveyor



County Surveyor's Comment \_\_\_\_\_

BOOK 18 CORNER RECORDS PAGE 45

NOTE: THE BEARINGS AND DISTANCES SHOWN ARE RECORD PER "J"/MAPS/49 P.C.D.R.  
 NO MATERIAL DISCREPANCIES WITH RECORD INFORMATION WERE FOUND.



BOOK 18 CORNER RECORDS PAGE 45