

CORNER RECORD

COUNTY OF PLACER, CALIFORNIA

City of _____

Document Number 20150077

Brief Legal Description PCL. "C", 10-PM-150



SEC 34
T12N
R7E

CORNER TYPE

Government Cor. Control
Meander Property
Rancho other
Date of Survey SEPTEMBER 29, 2015

CORNER TYPE (optional)

N. _____
E. _____
Zone _____ Datum _____
Elev. _____

Corner - Left as Found Found and Tagged Established Reestablished Rebuilt

Identification and type of corner found: Evidence used to identify or procedure used to establish or reestablish corner: FOUND RAILROAD SPIKE IN TRAVELED WAY OF ENGLISH COLONY WAY PER PARCEL MAP NO.72449, AT BOOK 10, OF PARCEL MAPS, PAGE 150, O.R.P.C., FROM FOUND MONUMENT, ESTABLISHED REFERENCE POINTS PRIOR TO ASPHALT OVERLAY.

BOOK 18 OF CORNER RECORDS, PAGE 48

A description of the physical condition of the monument as found and as set or reset: FROM REFERENCE POINTS, SET MAG-NAIL W/ 1-1/4" BRASS TAG STAMPED "PLACER CO. SURVEYOR" CENTERED OVER THE FOUND MONUMENT AFTER ASPHALT OVERLAY.

SURVEYOR'S STATEMENT

This Corner Record was prepared by me or under my direction in conformance with the Land Surveyors' Act on OCTOBER 8 2015.

Signed [Signature] L.S. or R.C.E. Number LS 7941



COUNTY SURVEYOR'S STATEMENT

This Corner Record was received _____ 20 ____ and examined and filed November 10, 2015 20 ____.

Signed Leslie Amsherry Title County Surveyor

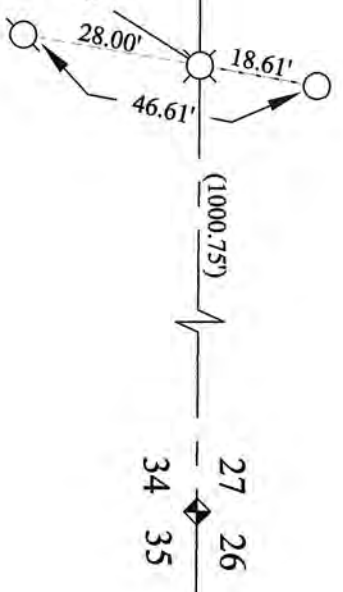
County Surveyor's Comment:
xx



- LEGEND
- ⊗ FD. RAILROAD SPIKE PER 10-PM-150, PRIOR TO PAVEMENT OVERLAY, SET MAG NAIL WITH "PLACER CO. SURVEYOR" TAG AFTER PAVEMENT OVERLAY
 - SET MAG NAIL WITH "PLACER CO. SURVEYOR" TAG
 - SET 5/8" REBAR WITH "PLACER CO. SURVEYOR" TAG
 - () RECORD PER 10-PM-150

ENGLISH COLONY WAY
D4052

SWETZER ROAD
E3060



NOTE
THIS CORNER RECORD REPRESENTS THE AS FOUND LOCATION OF THE MONUMENTS SHOWN HEREON, NO SURVEY HAS BEEN MADE OF SAID MONUMENTS IN RELATIONSHIP TO REFERENCED RECORD MAPS.