

CORNER RECORD

Document Number 20150072

City of Unincorporated Territory

County of Placer, California

Brief Legal Description Quarter Section corner common to Section's 11, and 12; Township 10 North, Range 7 East, M.D.M near the intersection of Eureka Rd. and Auburn Folsom Rd, shown on Book 6 of Surveys, page 24



S.11,12.
T.10N.
R.7E.
M.D.M.

CORNER TYPE

Government Corner Control
 Meander Property
 Rancho Other

COORDINATES(Optional)

N. See Sheet 2
 E. See Sheet 2
 Zone 2 NAD27 NAD83
 NAD83 Epoch 1991.35
 Elev. _____
 Vert. Datum: NGVD29 NADV88
 Meas. Units: Metric Imperial

Date of Survey August 21,2015

Corner - Left as found Found and tagged Established Reestablished Rebuilt

Identification and type of corner found: Evidence used to identify or procedure used to establish or reestablish the corner:
Used found reference points and ties to original monuments shown on 16CR34 and 16CR35 to re-establish the position of the original monuments destroyed during the construction of Auburn-Folsom Rd.

A description of the physical condition of the monument as found and as set or reset: _____
See reverse side for description of found monuments and reference points.

SURVEYOR'S STATEMENT

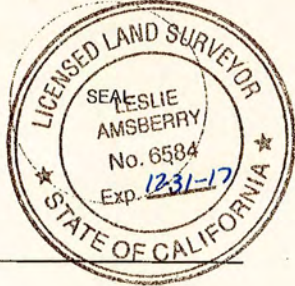
This Corner Record was prepared by me or under my direction in conformance with the Land Surveyor's Act on September 10, 2015.
 Signed [Signature] P.L.S. or R.C.E. No.: 7803



COUNTY SURVEYOR'S STATEMENT

This Corner Record was received _____ and examined and filed December 2 2015.

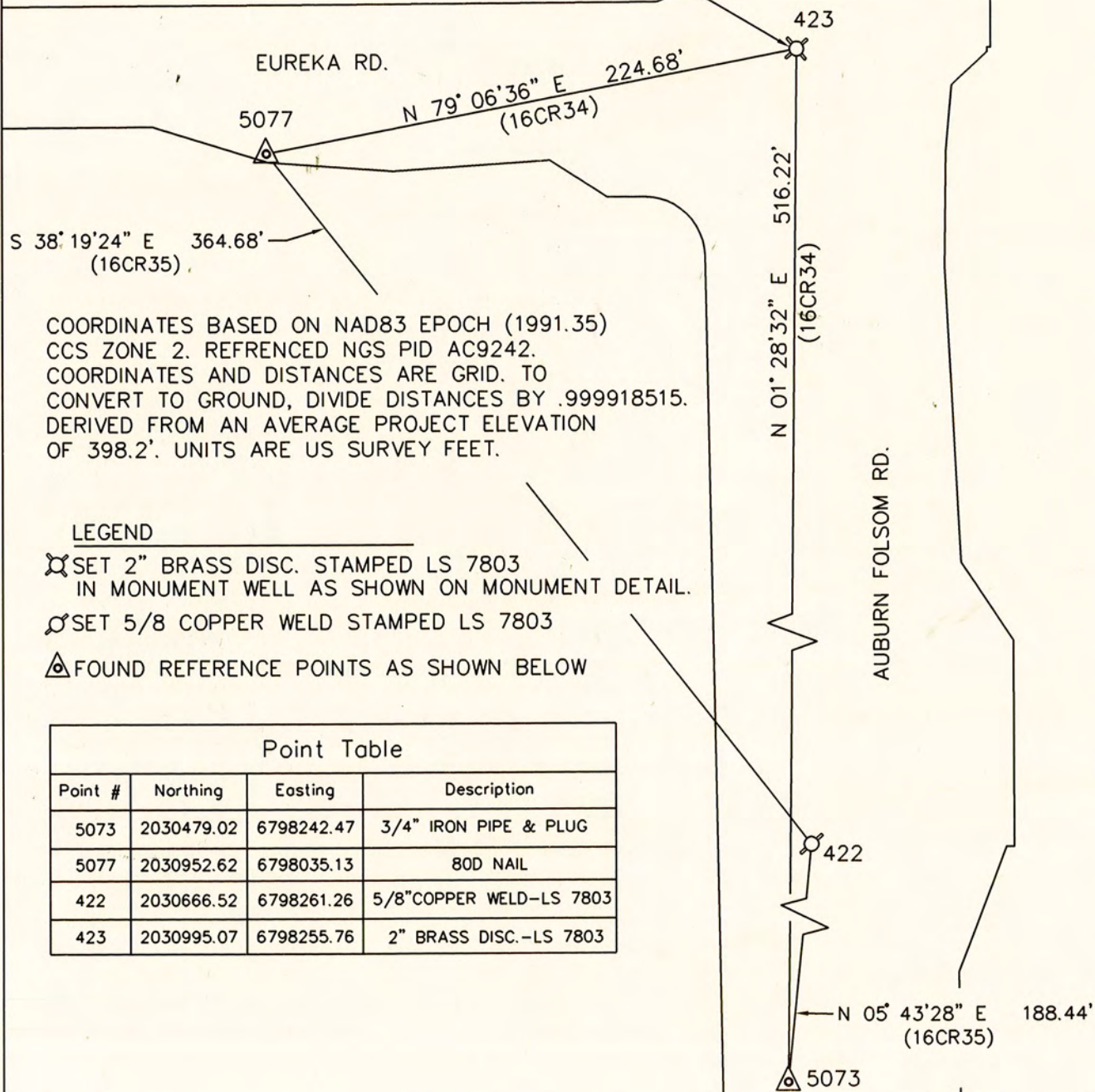
Signed [Signature] P.L.S. or R.C.E. No.: 6584
 Title County Surveyor



County Surveyor's Comment _____

BOOK 18 OF CORNER RECORDS, PAGE 50

MONUMENT DETAIL



COORDINATES BASED ON NAD83 EPOCH (1991.35)
 CCS ZONE 2. REFERENCED NGS PID AC9242.
 COORDINATES AND DISTANCES ARE GRID. TO
 CONVERT TO GROUND, DIVIDE DISTANCES BY .999918515.
 DERIVED FROM AN AVERAGE PROJECT ELEVATION
 OF 398.2'. UNITS ARE US SURVEY FEET.

LEGEND

- ⊗ SET 2" BRASS DISC. STAMPED LS 7803
IN MONUMENT WELL AS SHOWN ON MONUMENT DETAIL.
- ⊕ SET 5/8" COPPER WELD STAMPED LS 7803
- △ FOUND REFERENCE POINTS AS SHOWN BELOW

Point Table			
Point #	Northing	Easting	Description
5073	2030479.02	6798242.47	3/4" IRON PIPE & PLUG
5077	2030952.62	6798035.13	80D NAIL
422	2030666.52	6798261.26	5/8" COPPER WELD-LS 7803
423	2030995.07	6798255.76	2" BRASS DISC.-LS 7803