

# CORNER RECORD

Document Number 20150073  
 City of Unincorporated Territory County of Placer, California

Brief Legal Description Located in the centerline of Auburn Folsom Road between Fuller Drive and Fallsbrook Court.



S.12  
 T.10N.  
 R.7E.  
 M.D.M.

### CORNER TYPE

Government Corner  Control   
 Meander  Property   
 Rancho  Other

Date of Survey August 21, 2015

### COORDINATES(Optional)

N. See Sheet 2  
 E. See Sheet 2  
 Zone 2 NAD27  NAD83   
 NAD83 Epoch 1991.35  
 Elev. \_\_\_\_\_  
 Vert. Datum: NGVD29  NADV88   
 Meas. Units: Metric  Imperial

Corner - Left as found  Found and tagged  Established  Reestablished  Rebuilt

Identification and type of corner found: Evidence used to identify or procedure used to establish or reestablish the corner:  
Used found reference points and ties to monuments of no record, as shown on 16CR33 to reestablish position of said monuments destroyed by the construction of Auburn Folsom Rd.

A description of the physical condition of the monument as found and as set or reset: \_\_\_\_\_  
See reverse side for description of found reference points and set monuments.

### SURVEYOR'S STATEMENT

This Corner Record was prepared by me or under my direction in conformance with the Land Surveyor's Act on September 10, 2015.  
 Signed [Signature] P.L.S. or R.C.E. No.: 7803



### COUNTY SURVEYOR'S STATEMENT

This Corner Record was received \_\_\_\_\_ and examined and filed December 2, 2015.  
 Signed [Signature] P.L.S. or R.C.E. No.: 6584  
 Title County Surveyor  
 County Surveyor's Comment \_\_\_\_\_



BOOK 18 OF CORNER RECORDS, PAGE 51

PARK PLACE

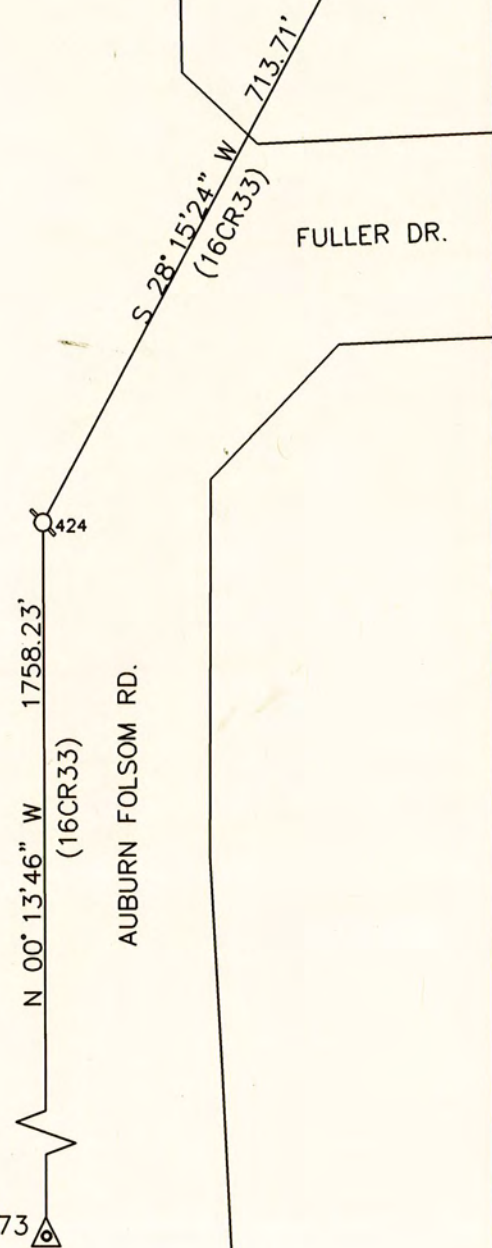
COORDINATES BASED ON NAD83 EPOCH (1991.35)  
 CCS ZONE 2. REFERENCED NGS PID AC9242.  
 COORDINATES AND DISTANCES ARE GRID. TO  
 CONVERT TO GROUND, DIVIDE DISTANCES BY .999918515.  
 DERIVED FROM AN AVERAGE PROJECT ELEVATION  
 OF 398.2'. UNITS ARE US SURVEY FEET.

LEGEND

- ⊙ SET 5/8 COPPER WELD STAMPED LS 7803
- △ FOUND REFERENCE POINTS AS SHOWN BELOW

Point Table			
Point #	Northing	Easting	Description
5049	2032865.90	6798573.31	PK NAIL & SHINER
5073	2030479.20	6798242.47	3/4" IRON PIPE & PLUG
424	2032237.24	6798235.43	5/8" COPPER WELD - LS 7803

FALLSBROOKE CT.



AUBURN FOLSOM RD.