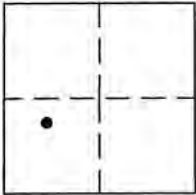


CORNER RECORD

COUNTY OF PLACER, CALIFORNIA

City of _____ Document Number 20150094

Brief Legal Description CENTERLINE CEDAR OAKS DRIVE, COUNTY ROAD NO. E0063, PER O-MAPS-58



SEC 1
T10N
R7E

CORNER TYPE

Government Cor. Control
Meander Property
Rancho other
Date of Survey OCTOBER 7, 2015

CORNER TYPE (optional)

N. _____
E. _____
Zone _____ Datum _____
Elev. _____

Corner - Left as Found Found and Tagged Established Reestablished Rebuilt

Identification and type of corner found: Evidence used to identify or procedure used to establish or reestablish corner: FOUND RAILROAD SPIKE IN TRAVELED WAY OF CEDAR OAKS DRIVE, PER O-MAPS-58, O.R.P.C., FROM FOUND MONUMENT, ESTABLISHED REFERENCE POINTS PRIOR TO ASPHALT OVERLAY.

A description of the physical condition of the monument as found and as set or reset: FROM REFERENCE POINTS, SET MAG-NAIL W/ 1-1/4" BRASS TAG STAMPED "PLACER CO. SURVEYOR" CENTERED OVER THE FOUND MONUMENT AFTER ASPHALT OVERLAY.

SURVEYOR'S STATEMENT

This Corner Record was prepared by me or under my direction in conformance with the Land Surveyors' Act on NOVEMBER 24 2015.

Signed [Signature] L.S. or R.C.E. Number LS 7941



COUNTY SURVEYOR'S STATEMENT

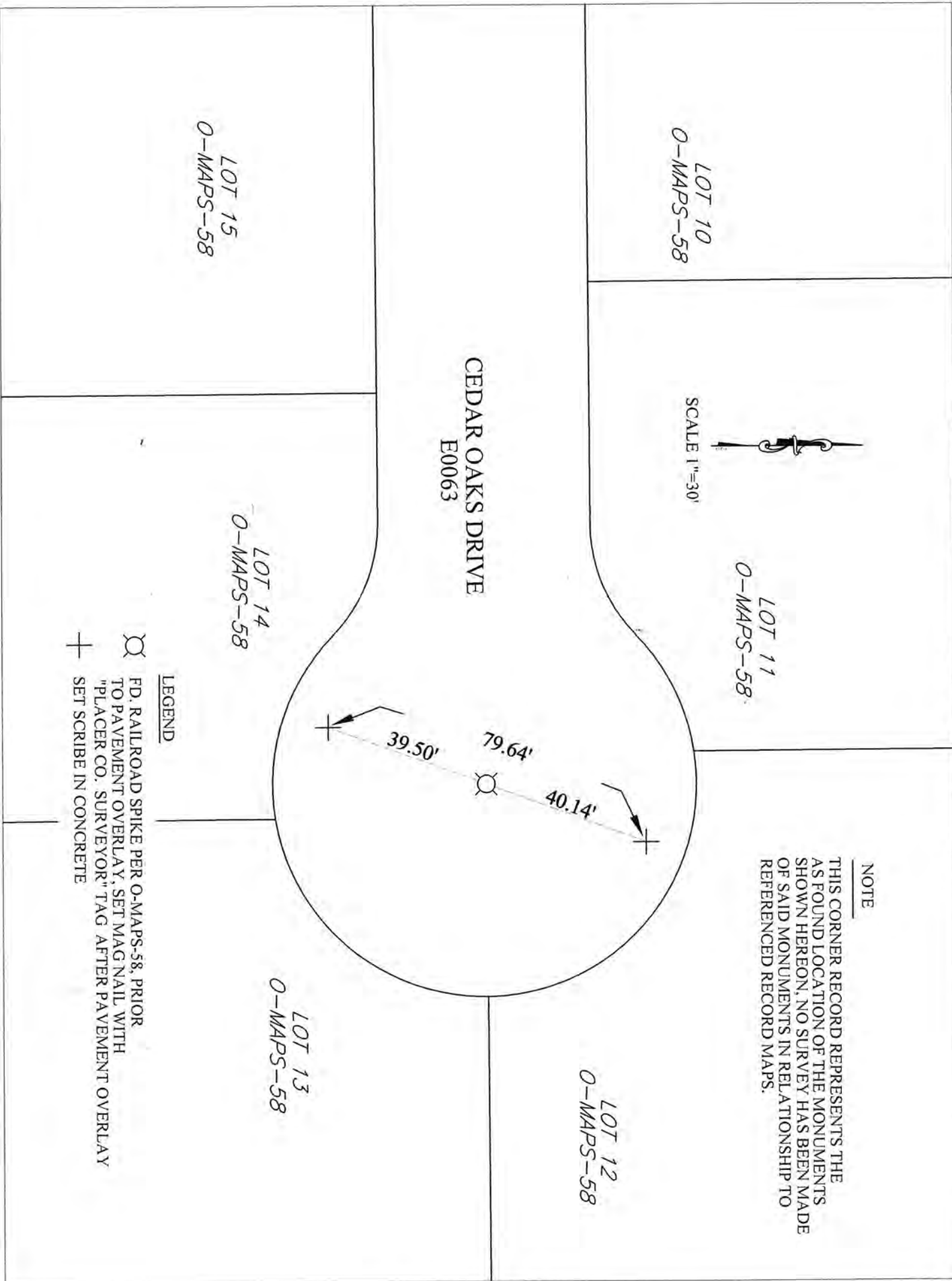
This Corner Record was received _____ 20 ____ and examined and filed DECEMBER 2, 2015 20 ____.

Signed Leslie Amstutz Title County Surveyor



County Surveyor's Comment:
xx

BOOK 18 OF CORNER RECORDS, PAGE 54



NOTE
 THIS CORNER RECORD REPRESENTS THE AS FOUND LOCATION OF THE MONUMENTS AS FOUND HEREON, NO SURVEY HAS BEEN MADE OF SAID MONUMENTS IN RELATIONSHIP TO REFERENCED RECORD MAPS.

LEGEND
 ☉ FD. RAILROAD SPIKE PER O-MAPS-58, PRIOR TO PAVEMENT OVERLAY, SET MAG NAIL WITH "PLACER CO. SURVEYOR" TAG AFTER PAVEMENT OVERLAY
 + SET SCRIBE IN CONCRETE