

# CORNER RECORD

Document Number

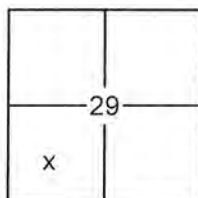
20150081

City of \_\_\_\_\_

County of \_\_\_\_\_

PLACER

, California

Brief Legal Description LOT 15, BLOCK Q, SQUAW VALLEY ESTATES SUBDIVISION NO.4, UNIT NO.3, F/MAPS/9 O.R.P.C.

SEC. 29  
T. 16 N.  
R. 16 E.  
M.D.B.& M.

## CORNER TYPE

Government Corner  Control  
Meander  Property  
Rancho  Other  
Date of Survey 8/27/2015

## COORDINATES (OPTIONAL)

N. \_\_\_\_\_  
 E. \_\_\_\_\_  
Zone \_\_\_\_\_ Datum \_\_\_\_\_  
Elev. \_\_\_\_\_  
Vert. Datum: NGVD29  NAVD88   
Meas. Units: Metric  Imperial

CORNER- Left as Found  Found and Tagged  Established  Reestablished  Rebuilt

Identification and type of corner found: Evidence used to identify or procedure used to establish or reestablish the corner:

USED RECORD DIMENSIONS AND FOUND MONUMENTS PER F/MAPS/9 O.R.P.C. AND 11/CR/1, AND FOUND MONUMENTS OF NO RECORD TO REESTABLISH THE MISSING CORNER OF LOT 15, BLOCK Q, AS SHOWN ON THE ACCOMPANYING PLAT.

A description of the physical condition of the monument as found and as set or reset:

- SET 5/8" REBAR WITH YELLOW PLASTIC CAP LS-7429 AS SHOWN ON PLAT  
 FOUND MONUMENT AS SHOWN ON PLAT  
 DIMENSION POINT (NOTHING FOUND OR SET)

## SURVEYOR'S STATEMENT

This Corner Record was prepared by me or under my direction in conformance with the

Land Surveyors Act on January 14, 2016

Signed Matthew S. Webb P.L.S. or R.C.E. No. 7429



## COUNTY SURVEYOR'S STATEMENT

This Corner Record was received \_\_\_\_\_

and examined and filed February 1, 2016

Signed Leslie Amberry P.L.S. or R.C.E. No. 6584

Title County Surveyor



COUNTY SURVEYOR'S COMMENT:

---

---

---

---

---

---

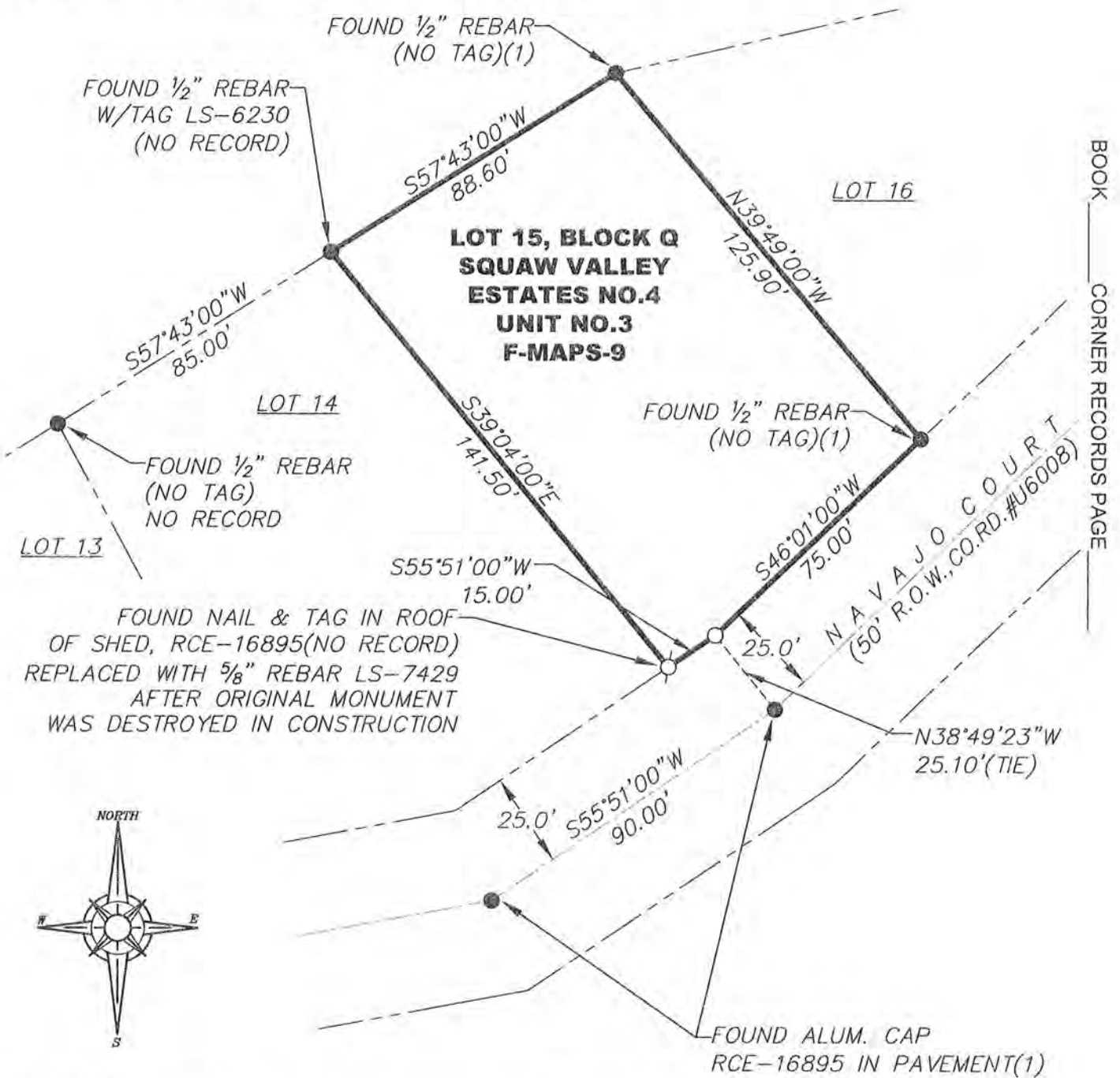
---

---

PLAT OF SURVEY

LOT 15, BLOCK Q, SQUAW VALLEY ESTATES SUBDIVISION NO.4, UNIT NO.3, AS FILED IN BOOK F OF MAPS AT PAGE 9, OFFICIAL RECORDS PLACER COUNTY, CALIFORNIA, A PORTION OF SECTION 29, TOWNSHIP 16 N., RANGE 16 E., M.D.B. & M.

SCALE 1" = 40' DATE OF SURVEY 8/27/2015



NOTE: ALL BEARINGS AND DISTANCES SHOWN HEREON ARE RECORD PER F/MAPS/9, O.R.P.C.

- FOUND MONUMENT AS SHOWN HEREON
- SET 5/8" REBAR WITH YELLOW PLASTIC CAP L.S. 7429 OR OTHERWISE NOTED
- DIMENSION POINT (NOTHING FOUND OR SET)
- (1) PER 11/CR/1

J/N 1258.01

BOOK \_\_\_\_\_ CORNER RECORDS PAGE \_\_\_\_\_