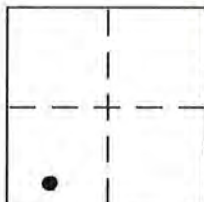


**CORNER RECORD**

Document Number 20150101

City of UNINCORPORATED AREA County of PLACER, California

Brief Legal Description LOT 505 LAHONTAN UNIT II  
Book "W" OF MAPS PAGE 23 P.C.O.R.



**CORNER TYPE**

SEC. 24 Government Corner  Control   
 T. 17 N. Meander  Property   
 R. 16 E. Rancho  Other   
 M.D.M. Date of Survey 8/10/15

**COORDINATES (Optional)**

N. \_\_\_\_\_  
 E. \_\_\_\_\_  
 Zone \_\_\_\_\_ NAD27  NAD83   
 NAD83 Epoch \_\_\_\_\_  
 Elev. \_\_\_\_\_  
 Vert. Datum: NGVD29  NAVD88   
 Meas. Units: Metric  Imperial

Corner - Left as found  Found and tagged  Established  Reestablished  Rebuilt

Identification and type of corner found: Evidence used to identify or procedure used to establish or reestablish the corner:

● = FOUND 3/4" REBAR w/ PLASTIC CAP L.S. 4715 PER "W"/MAPS/23 P.C.O.R.  
 ● = FOUND 2" BRASS CAP IN MONUMENT WELL, L.S. 4715 PER "W"/MAPS/23 P.C.O.R.

A description of the physical condition of the monument as found and as set or reset:

○ = SET BATHEY MONUMENT (T-BAR) w/ NAIL & TAG P.L.S. 8628

JN: 15064

**SURVEYOR'S STATEMENT**

This Corner Record was prepared by me or under my direction in conformance with the Land Surveyor's Act on OCTOBER 21, 2015

Signed J Kurt Margraf P.L.S. or R.C.E. No. 8628  
LIC. EXP. 12/31/15



**COUNTY SURVEYOR'S STATEMENT**

This Corner Record was received \_\_\_\_\_ and examined and filed FEBRUARY 26 2016

Signed Leslie Amberry P.L.S. or R.C.E. No. 6584

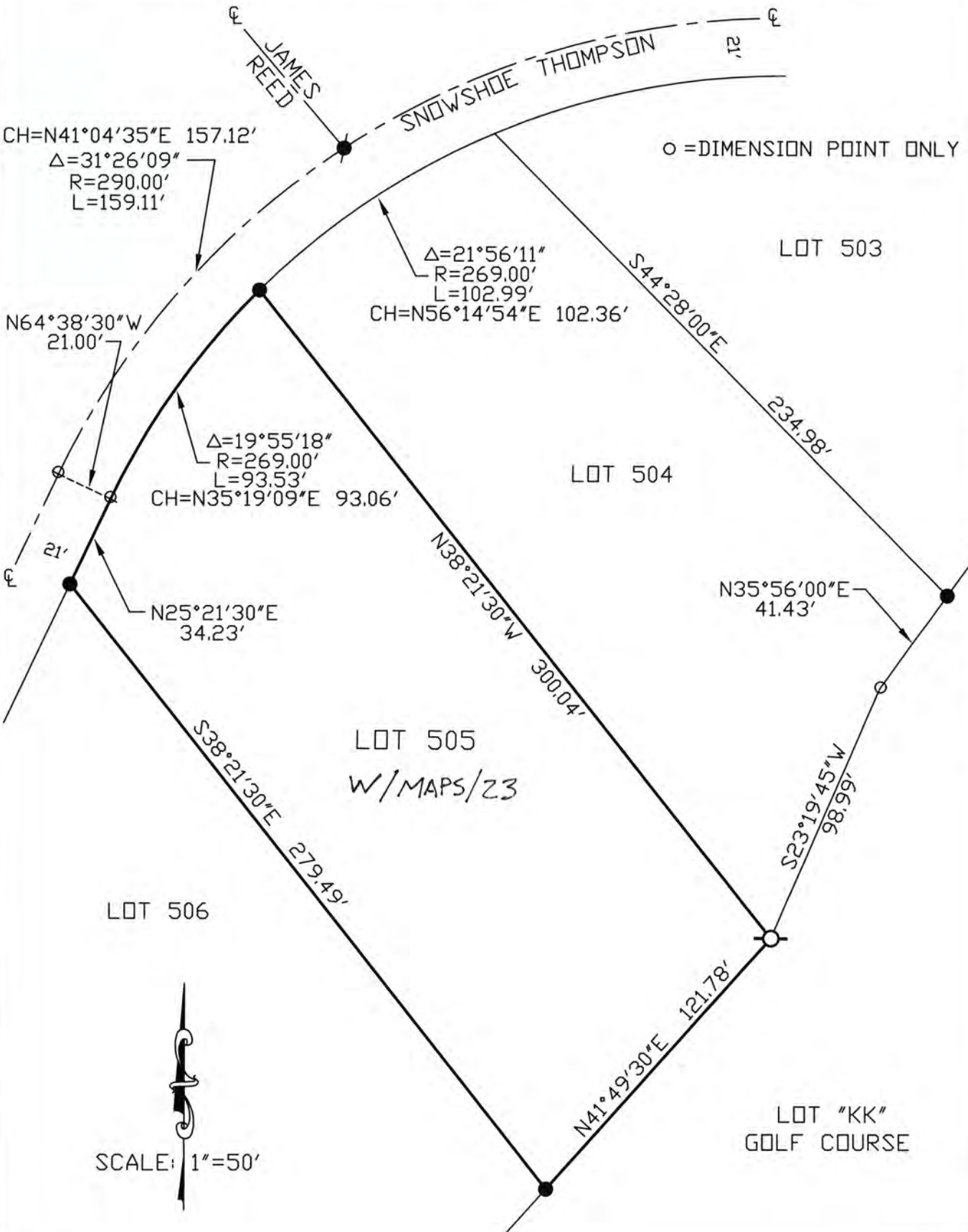
Title County Surveyor



County Surveyor's Comment \_\_\_\_\_

BOOK 18 CORNER RECORDS PAGE 83

NOTE: THE BEARINGS AND DISTANCES SHOWN ARE RECORD PER "W"/MAPS/23 P.C.D.R.  
 NO MATERIAL DISCREPANCIES WITH RECORD INFORMATION WERE FOUND.



BOOK 18 CORNER RECORDS PAGE 82