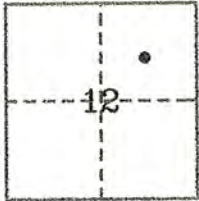


CORNER RECORD

COUNTY OF PLACER, CALIFORNIA

City of _____ Document Number 20150099

Brief Legal Description LOT 74 CHAMBERLANDS ADDITION UNIT NO. 3 H MAPS 58



T.14N.
R.16E
M.D.B.M.

CORNER TYPE

Government Corner Control
Meander Property
Rancho Other
Date of Survey SEPTEMBER 2015

COORDINATES
(Optional)

N. _____
E. _____
Zone _____ Datum _____
Elev. _____

Corner— Left as found Found and tagged Established Reestablished Rebuilt

Identification and type of corner found: Evidence used to identify or procedure used to establish or reestablish corner:

● FD 1/2" REBAR WITH COPPER SLEEVE L.S. 2515 PER H MAPS 58
AND 7 CR 60 UNLESS OTHERWISE NOTED. USED ROW AS
DETERMINED BY 7 CR 60 AND 1 OTHER RECOVERED ORIGINAL MONUMENT.
USED RECOVERED ORIGINAL MONUMENTS FOR WEST LINE LOT 74.

A description of the physical condition of the monument as found and as set or reset:

Q SET 5/8" REBAR L.S. 5886

SURVEYOR'S STATEMENT

This Corner Record was prepared by me or under my direction in conformance with the Professional Land Surveyor's Act on 11-7 2015

Signed Thomas C. Buswell L.S. or R.C.E. Number LS 5886
THOMAS C. BUSWELL



COUNTY SURVEYOR'S STATEMENT

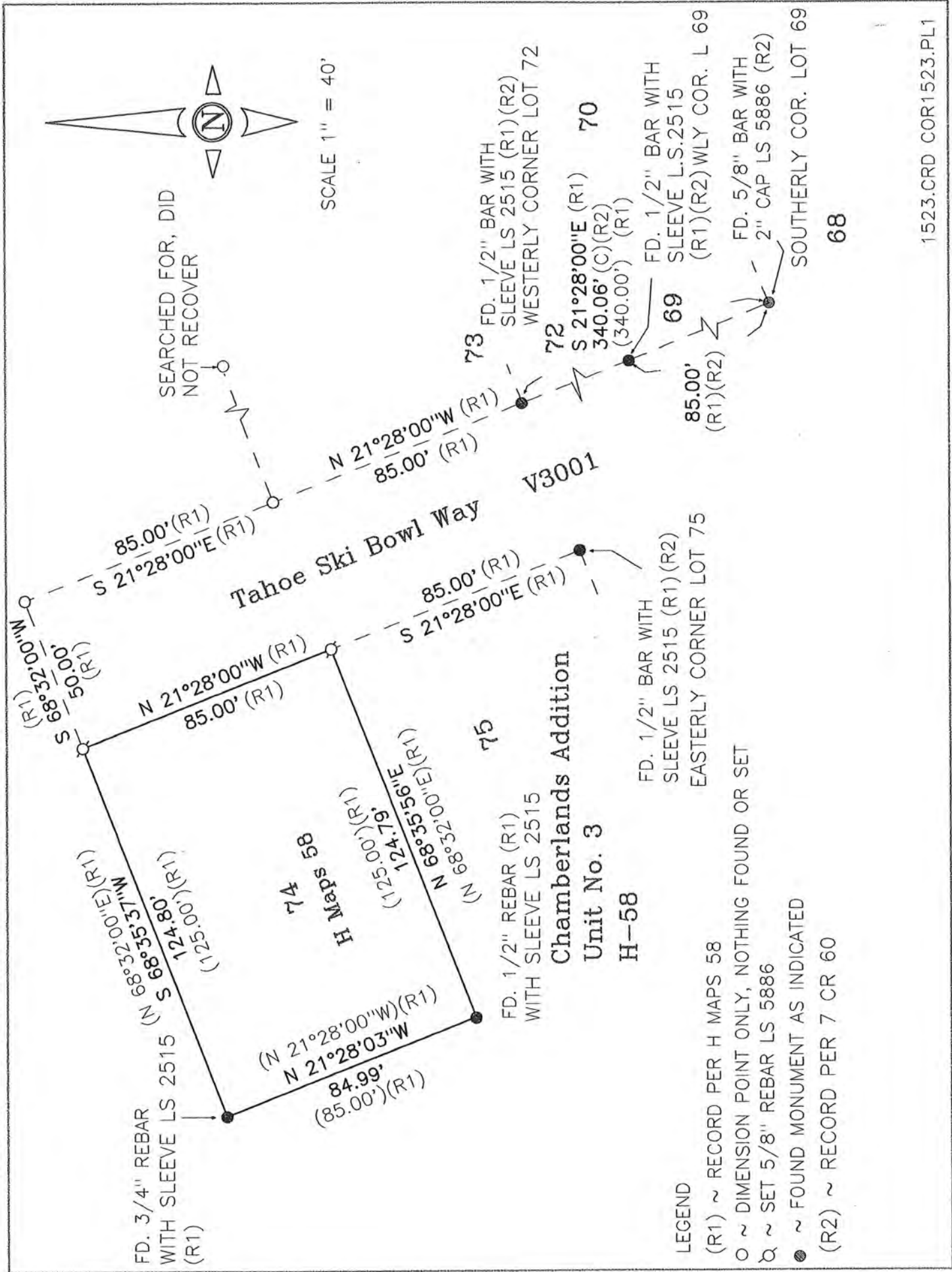
This Corner Record was Received _____ 20 _____ and Examined

and Filed April 25 2016

Signed Leslie Amberry Title County Surveyor



County Surveyor's Comment _____



LEGEND

- (R1) ~ RECORD PER H MAPS 58
- ~ DIMENSION POINT ONLY, NOTHING FOUND OR SET
- ⊗ ~ SET 5/8" REBAR LS 5886
- ~ FOUND MONUMENT AS INDICATED
- (R2) ~ RECORD PER 7 CR 60