

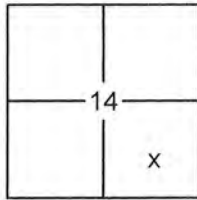
# CORNER RECORD

Document Number 20160006

City of \_\_\_\_\_

County of PLACER, California

Brief Legal Description LOT 82, TALMONT ESTATES UNIT NO.2 SUBDIVISION, I/MAPS/60 O.R.P.C.



SEC. 14  
T. 15 N.  
R. 16 E.  
M.D.B. & M.

### CORNER TYPE

- Government Corner  Control
- Meander  Property
- Rancho  Other
- Date of Survey 10/21/2015

### COORDINATES (OPTIONAL)

- N. \_\_\_\_\_
- E. \_\_\_\_\_
- Zone \_\_\_\_\_ Datum \_\_\_\_\_
- Elev. \_\_\_\_\_
- Vert. Datum: NGVD29  NAVD88
- Meas. Units: Metric  Imperial

CORNER- Left as Found  Found and Tagged  Established  Reestablished  Rebuilt

Identification and type of corner found: Evidence used to identify or procedure used to establish or reestablish the corner:

USED RECORD DIMENSIONS AND FOUND MONUMENTS PER I/MAPS/60 O.R.P.C., TO REESTABLISH THE MISSING CORNER OF LOT 82, AS SHOWN ON THE ACCOMPANYING PLAT.

A description of the physical condition of the monument as found and as set or reset:

- SET 5/8" REBAR WITH YELLOW PLASTIC CAP LS-7429 AS SHOWN ON PLAT
- FOUND MONUMENT AS SHOWN ON PLAT
- DIMENSION POINT (NOTHING FOUND OR SET)

### SURVEYOR'S STATEMENT

This Corner Record was prepared by me or under my direction in conformance with the

Land Surveyors Act on Feb. 25, 2016

Signed Matthew S. Webb P.L.S. or R.C.E. No. 7429



### COUNTY SURVEYOR'S STATEMENT

This Corner Record was received \_\_\_\_\_

and examined and filed April 25, 2016

Signed Leslie Ansberry P.L.S. or R.C.E. No. 6584

Title County Surveyor



COUNTY SURVEYOR'S COMMENT:

\_\_\_\_\_  
\_\_\_\_\_  
\_\_\_\_\_  
\_\_\_\_\_

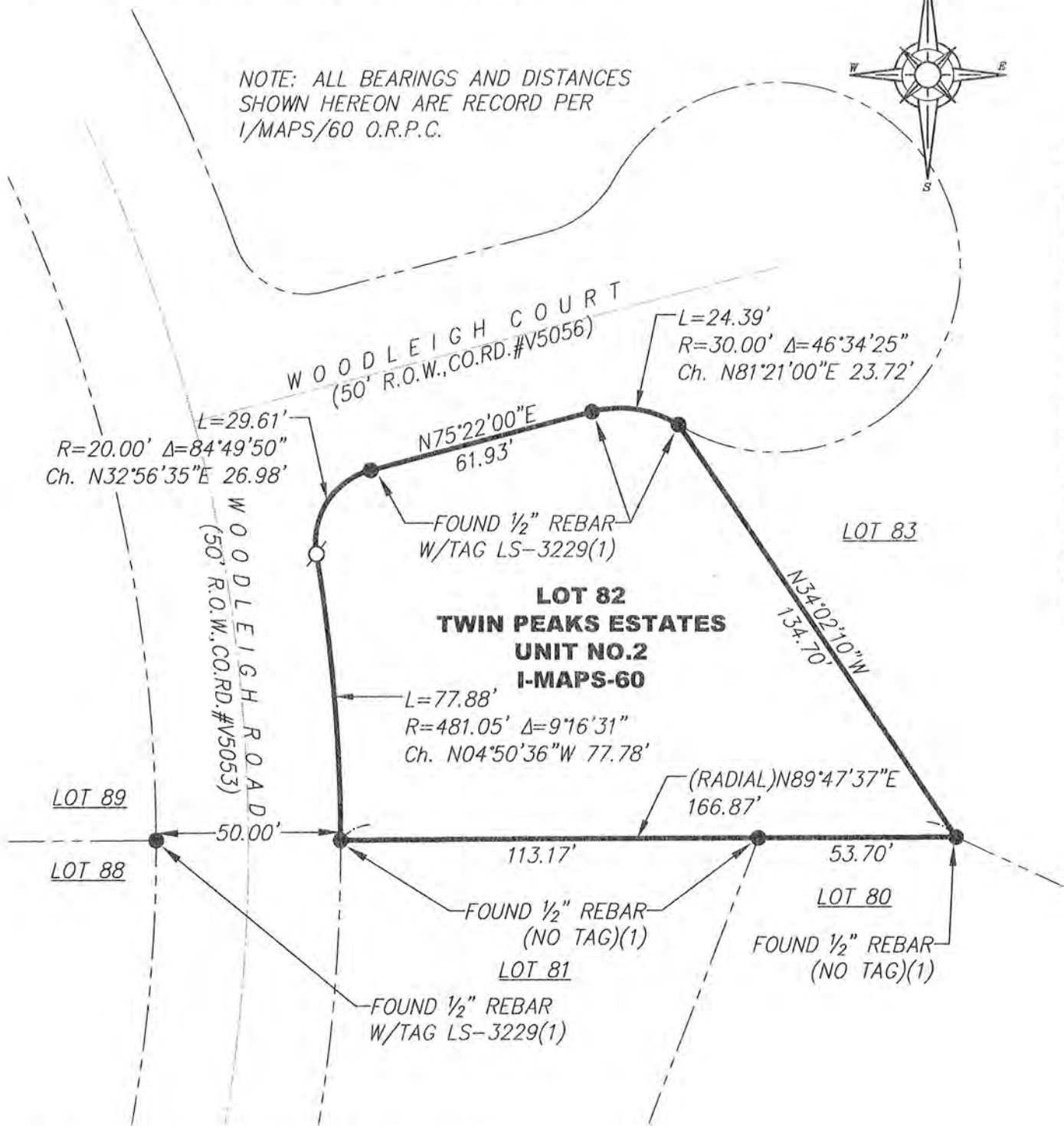
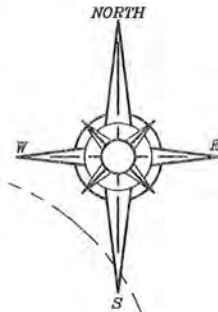
BOOK 18 CORNER RECORDS PAGE 99

PLAT OF SURVEY

LOT 82, TWIN PEAKS ESTATES UNIT NO.2 SUBDIVISION, AS FILED IN BOOK 1 OF MAPS AT PAGE 60, OFFICIAL RECORDS PLACER COUNTY, CALIFORNIA. A PORTION OF SECTION 14, TOWNSHIP 15 N., RANGE 16 E., M.D.B. & M.

SCALE 1" = 40' DATE OF SURVEY 10/21/2015

NOTE: ALL BEARINGS AND DISTANCES SHOWN HEREON ARE RECORD PER I/MAPS/60 O.R.P.C.



BOOK 18 CORNER RECORDS PAGE 99

- FOUND MONUMENT AS SHOWN HEREON
- SET 5/8" REBAR WITH YELLOW PLASTIC CAP L.S. 7429 OR OTHERWISE NOTED
- (1) PER I/MAPS/60

J/N 2619.00