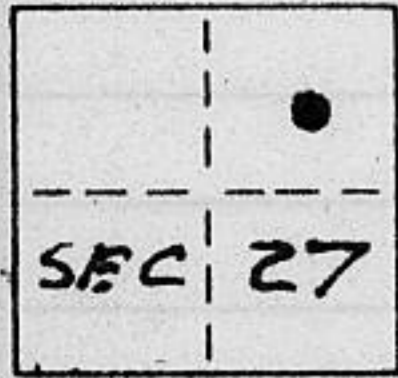


CORNER RECORD

COUNTY OF PLACER T. 17N R. 14E M.D. MERIDIAN CALIFORNIA
 CORNER TYPE: GOV'T. CORNER MEANDER RANCHO CONTROL OTHER
 CORNER IDENTIFICATION - DATE OF VISIT 7-5 1988

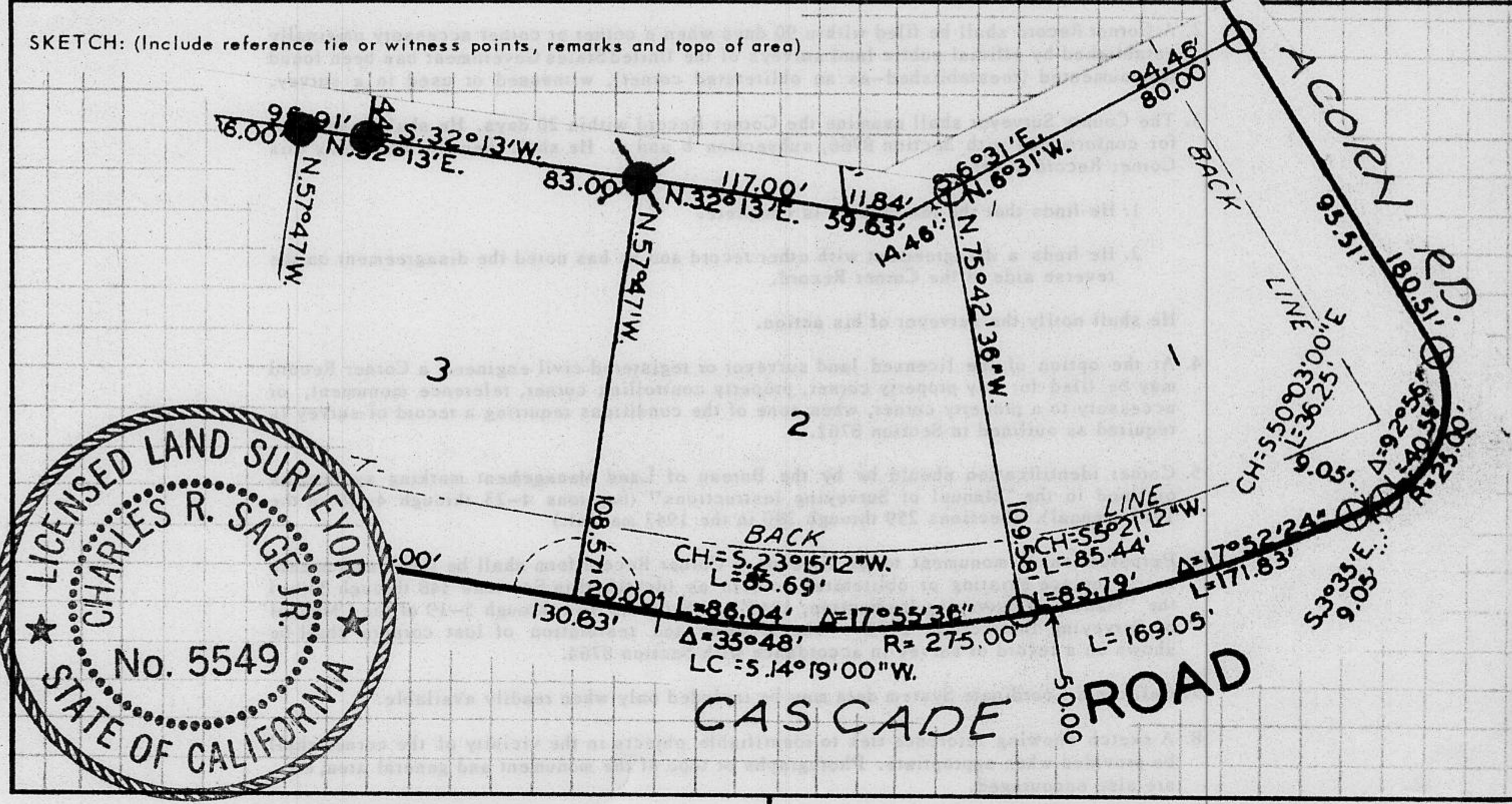


LOT 1, BLK. "H" ICE LAKES SUB. UNIT #2
BLK. "G" MAPS PG. 1

CORNER - LEFT AS FOUND FOUND AND TAGGED REESTABLISHED OBLITERATED CORNER REBUILT
 PHYSICAL DESCRIPTION OF CORNER FOUND: EVIDENCE AND METHOD USED TO IDENTIFY OR REESTABLISH
 ● = FOUND 3/4" IRON PIPE
 ○ = FOUND 1" I.P. W/PLASTIC PLUG STAMPED R.C.E. 19396

PHYSICAL DESCRIPTION OF MONUMENTS REBUILT OR PERPETUATED
 ○ = SET 3/4" IRON PIPE W/PLASTIC PLUG STAMPED L.S. 5549

CALIFORNIA COORDINATE SYSTEM ORDER: FIRST SECOND THIRD
 STATIONS USED: NGS (USC & GS) STATE COUNTY OTHER STATION _____ STATION _____
 ZONE _____ ELEVATION _____ NORTHINGS (Y) _____ EASTINGS (X) _____



SURVEYOR'S CERTIFICATE
 THIS CORNER RECORD WAS PREPARED BY ME OR UNDER MY DIRECTION IN CONFORMANCE WITH THE LAND SURVEYORS ACT ON 7-14 1988
 SIGNED: Charles R. Sage Jr.
 L.S. or R.C.E. No.: L.S. 5549 EXP. 6-30-89
 SEAL

COUNTY SURVEYOR'S CERTIFICATE
 THIS CORNER RECORD WAS RECEIVED 12/15 1991
 AND EXAMINED AND FILED 6/8 1992
 BY: Bruce J. McDaniel
 TITLE: DEPUTY COUNTY SURVEYOR
 DOCUMENT No. _____
 STATEMENT ON BACK OF SHEET YES NO

BOOK 2, CORNER RECORDS, PAGE 192

JN: 8871