

CORNER RECORD

COUNTY OF PLACER T. 15N R. 16E MD MERIDIAN CALIFORNIA

CORNER TYPE: GOV'T. CORNER MEANDER RANCHO CONTROL OTHER
 CORNER IDENTIFICATION - DATE OF VISIT 6-7-88 1988



TAHOE SWISS VILLAGE TRACT No. 2
BOOK F PAGE 49

CORNER - LEFT AS FOUND FOUND AND TAGGED REESTABLISHED OBLITERATED CORNER REBUILT

PHYSICAL DESCRIPTION OF CORNER FOUND: EVIDENCE AND METHOD USED TO IDENTIFY OR REESTABLISH

- FOUND 1/2" REBAR, SET PLASTIC CAP LS 5549
- FOUND 3/4" GALV. PIPE DISTURBED, RESET W/ PLASTIC CAP STAMPED LS 5549
- FOUND 3/4" IRON PIN PER BOOK F PAGE 49

PHYSICAL DESCRIPTION OF MONUMENTS REBUILT OR PERPETUATED

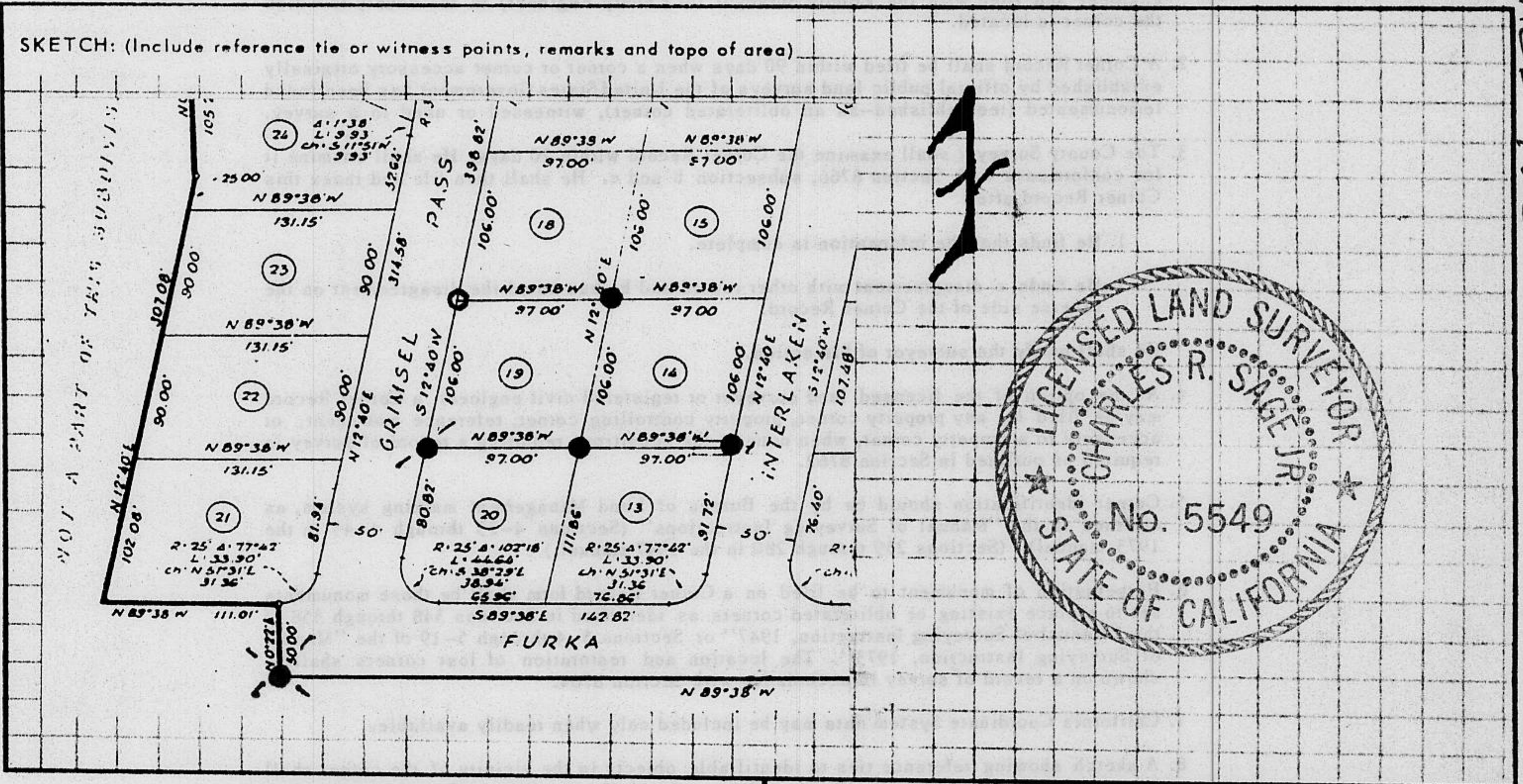
- SET 3/4" PIPE WITH PLASTIC PLUG LS 5549

CALIFORNIA COORDINATE SYSTEM ORDER: FIRST SECOND THIRD

STATIONS USED: NGS (USC & GS) STATE COUNTY OTHER STATION _____ STATION _____

ZONE _____ ELEVATION _____ NORTHINGS (Y) _____ EASTINGS (X) _____

SKETCH: (Include reference tie or witness points, remarks and topo of area)



SURVEYOR'S CERTIFICATE

THIS CORNER RECORD WAS PREPARED BY ME OR UNDER MY DIRECTION IN CONFORMANCE WITH THE LAND SURVEYORS ACT ON JUNE 6 191988

SIGNED: Charles R. Sage Jr.

L.S. or R.C.E. No.: L.S. 5549 EXP. 6-3-89

SEAL

COUNTY SURVEYOR'S CERTIFICATE

THIS CORNER RECORD WAS RECEIVED 12/15 1991 AND EXAMINED AND FILED 6/8 1992

BY: Bruce P. McDaniel
 TITLE: DEPUTY COUNTY SURVEYOR

DOCUMENT No. _____
 STATEMENT ON BACK OF SHEET

YES NO

Book 2, Corner Records, Page 195

JN: 8855