

**CORNER RECORD**

COUNTY OF PLACER T. 14N R. 17E MD MERIDIAN CALIFORNIA

CORNER TYPE: GOV'T. CORNER  MEANDER  RANCHO  CONTROL  OTHER   
 CORNER IDENTIFICATION - DATE OF VISIT 5-27-88 1988



**LOT 162 CHAMBERLANDS UNIT 'E'**  
**BOOK G PAGE 61**

CORNER - LEFT AS FOUND  FOUND AND TAGGED  REESTABLISHED OBLITERATED CORNER  REBUILT

PHYSICAL DESCRIPTION OF CORNER FOUND: EVIDENCE AND METHOD USED TO IDENTIFY OR REESTABLISH

● **FOUND 1/2" REBAR PER BOOK G PAGE 61**

PHYSICAL DESCRIPTION OF MONUMENTS REBUILT OR PERPETUATED

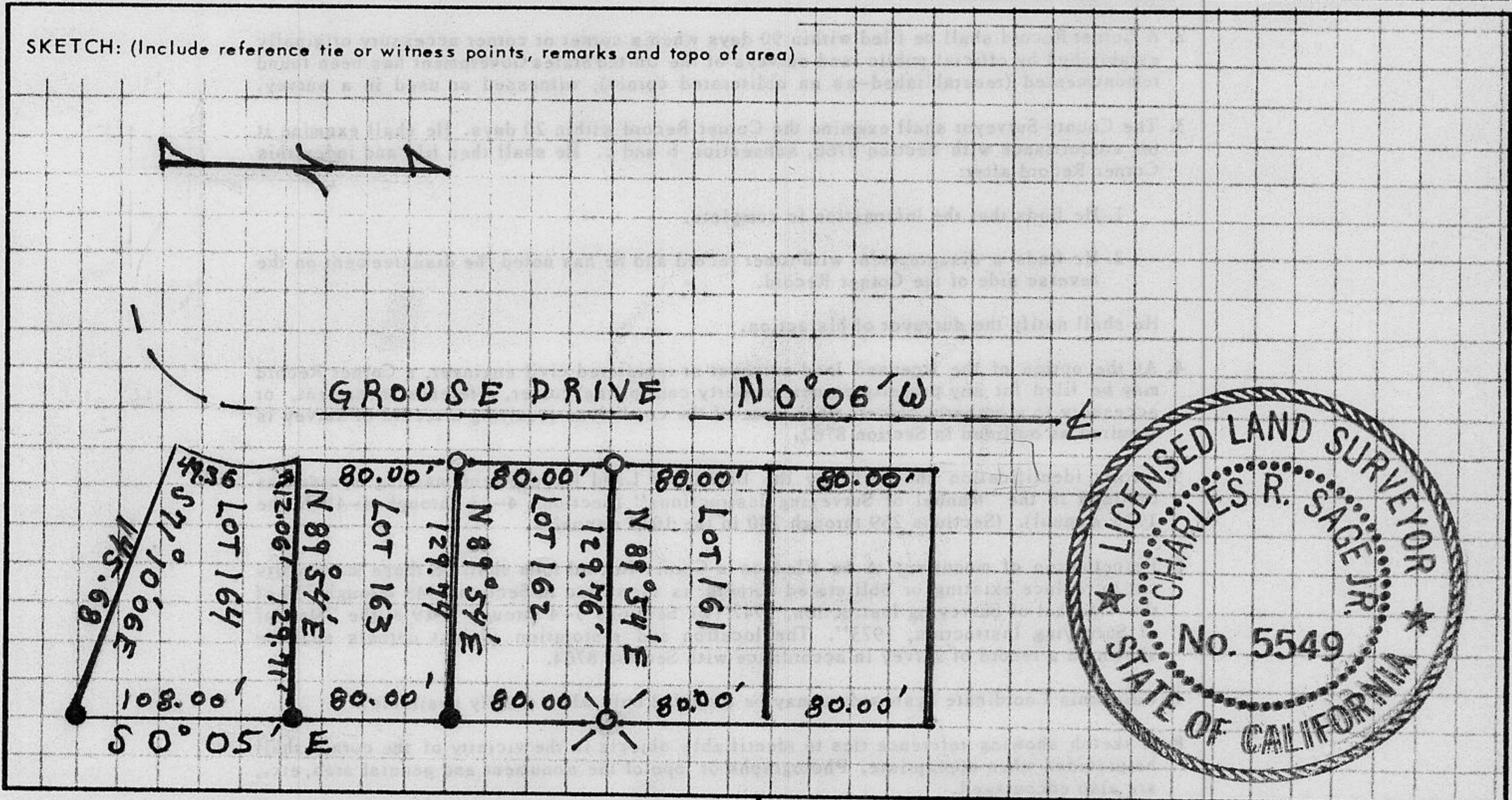
○ **SET 3/4" IRON PIPE W/ PLASTIC PLUG L.S. 5549 0.1' ABOVE GROUND**  
 ○ **SET 1" REBAR W/ WIRED BRASS TAG L.S. 5549 0.2' ABOVE GROUND**

CALIFORNIA COORDINATE SYSTEM ORDER: FIRST  SECOND  THIRD

STATIONS USED: NGS (USC & GS)  STATE  COUNTY  OTHER  STATION \_\_\_\_\_ STATION \_\_\_\_\_

ZONE \_\_\_\_\_ ELEVATION \_\_\_\_\_ NORTHINGS (Y) \_\_\_\_\_ EASTINGS (X) \_\_\_\_\_

SKETCH: (Include reference tie or witness points, remarks and topo of area)



**SURVEYOR'S CERTIFICATE**

THIS CORNER RECORD WAS PREPARED BY ME OR UNDER MY DIRECTION IN CONFORMANCE WITH THE LAND SURVEYORS ACT ON MAY 27 191988

SIGNED: Charles R. Sage Jr.

L.S. or R.C.E. No.: L.S. 5549 EXP 6-3-89

SEAL

**COUNTY SURVEYOR'S CERTIFICATE**

THIS CORNER RECORD WAS RECEIVED 12/15 1991 AND EXAMINED AND FILED 6/8 1992

BY: Bruce L. McDaniel  
 TITLE: DEPUTY COUNTY SURVEYOR

DOCUMENT No. \_\_\_\_\_  
 STATEMENT ON BACK OF SHEET

YES  NO

Book 2, CORNER RECORDS, PAGE 196

JN 8853