

CORNER RECORD

COUNTY OF PLACER T. 16 N. R. 17 E. M. D. MERIDIAN CALIFORNIA

CORNER TYPE: GOV'T. CORNER MEANDER RANCHO CONTROL OTHER
 CORNER IDENTIFICATION - DATE OF VISIT 3-15 1989



LOT 22, BLOCK "B" HIGHLANDS UNIT NO. 1
BK. "E" OF MAPS PG. 92

CORNER - LEFT AS FOUND FOUND AND TAGGED REESTABLISHED OBLITERATED CORNER REBUILT

PHYSICAL DESCRIPTION OF CORNER FOUND: EVIDENCE AND METHOD USED TO IDENTIFY OR REESTABLISH

= FOUND 1/2" REBAR PER 'E'/92

PHYSICAL DESCRIPTION OF MONUMENTS REBUILT OR PERPETUATED

= SET 3/4" IRON PIPE W/PLASTIC CAP STAMPED L.S. 5549

= CORNER FALLS IN POWER POLE, SET N&T @ 12 INTX. W/P.P., L.S. 5549

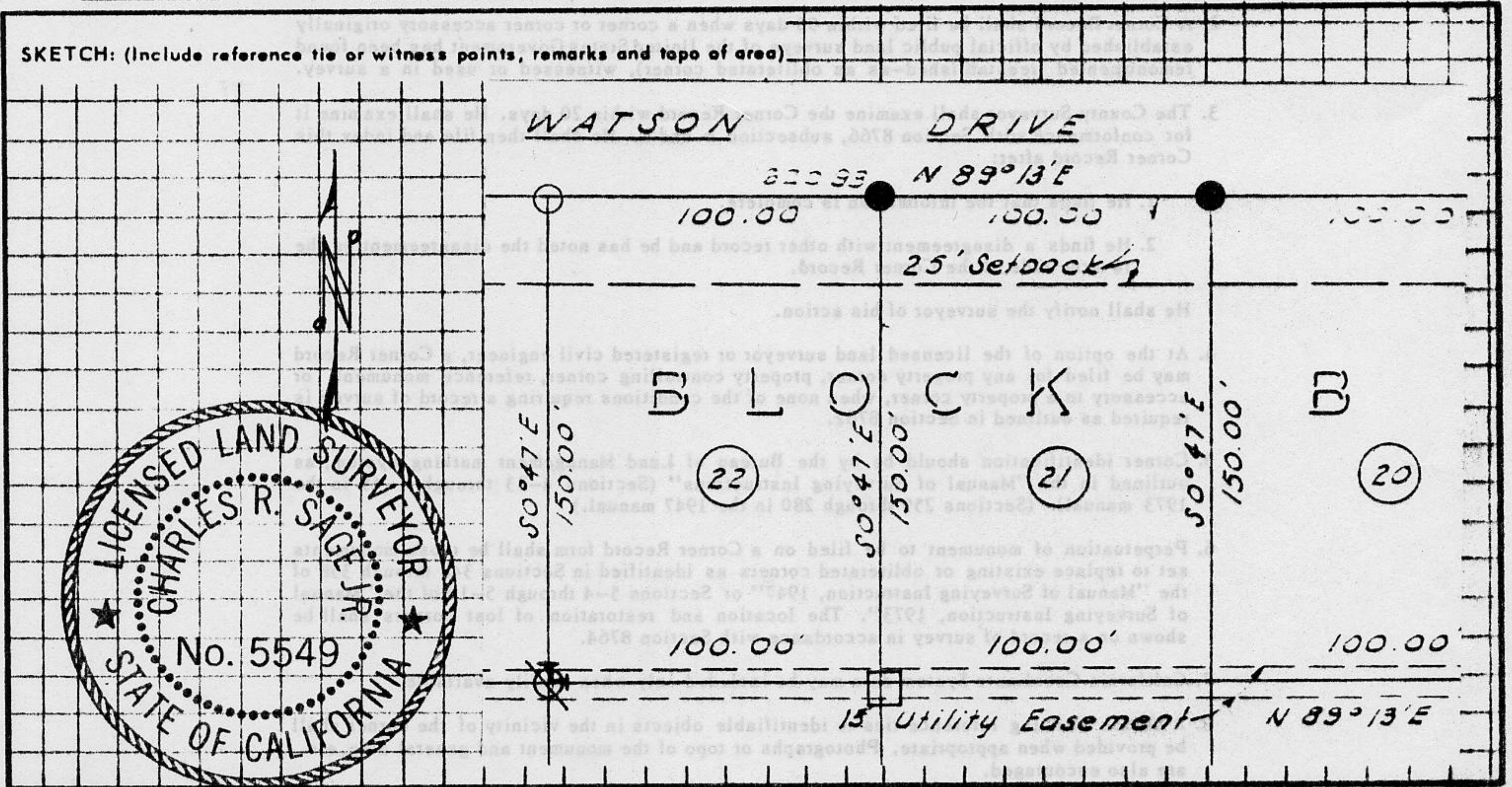
= SET CHISEL X ON WATER BOX LID

CALIFORNIA COORDINATE SYSTEM ORDER: FIRST SECOND THIRD

STATIONS USED: NGS (USC & GS) STATE COUNTY OTHER STATION _____ STATION _____

ZONE _____ ELEVATION _____ NORTHINGS (Y) _____ EASTINGS (X) _____

SKETCH: (Include reference tie or witness points, remarks and topo of area)



JN: 8910

SURVEYOR'S CERTIFICATE

THIS CORNER RECORD WAS PREPARED BY ME OR UNDER MY DIRECTION IN CONFORMANCE WITH THE LAND SURVEYORS ACT ON 3-22 1989

SIGNED: Charles R. Sage Jr.

L.S. or R.C.E. No.: L.S. 5549 EXP. 6-30-90

SEAL

COUNTY SURVEYOR'S CERTIFICATE

THIS CORNER RECORD WAS RECEIVED 12/15 1991 AND EXAMINED AND FILED 6/8 1992

BY: Gail R. McDaniel
 TITLE: DEPUTY COUNTY SURVEYOR

DOCUMENT No. _____

STATEMENT ON BACK OF SHEET

YES NO

Book 2, CORNER RECORDS, PAGE 199