

CORNER RECORD

COUNTY OF PLACER T. 15 N. R. 16 E. M.D. MERIDIAN CALIFORNIA

CORNER TYPE: GOV'T. CORNER MEANDER RANCHO CONTROL OTHER
 CORNER IDENTIFICATION - DATE OF VISIT June 1, 1990



LOT 3, BLOCK 10 TIMBERLAND TRACT
 BOOK "D" OF MAPS AT PAGE 50

CORNER - LEFT AS FOUND FOUND AND TAGGED REESTABLISHED OBLITERATED CORNER REBUILT

PHYSICAL DESCRIPTION OF CORNER FOUND: EVIDENCE AND METHOD USED TO IDENTIFY OR REESTABLISH

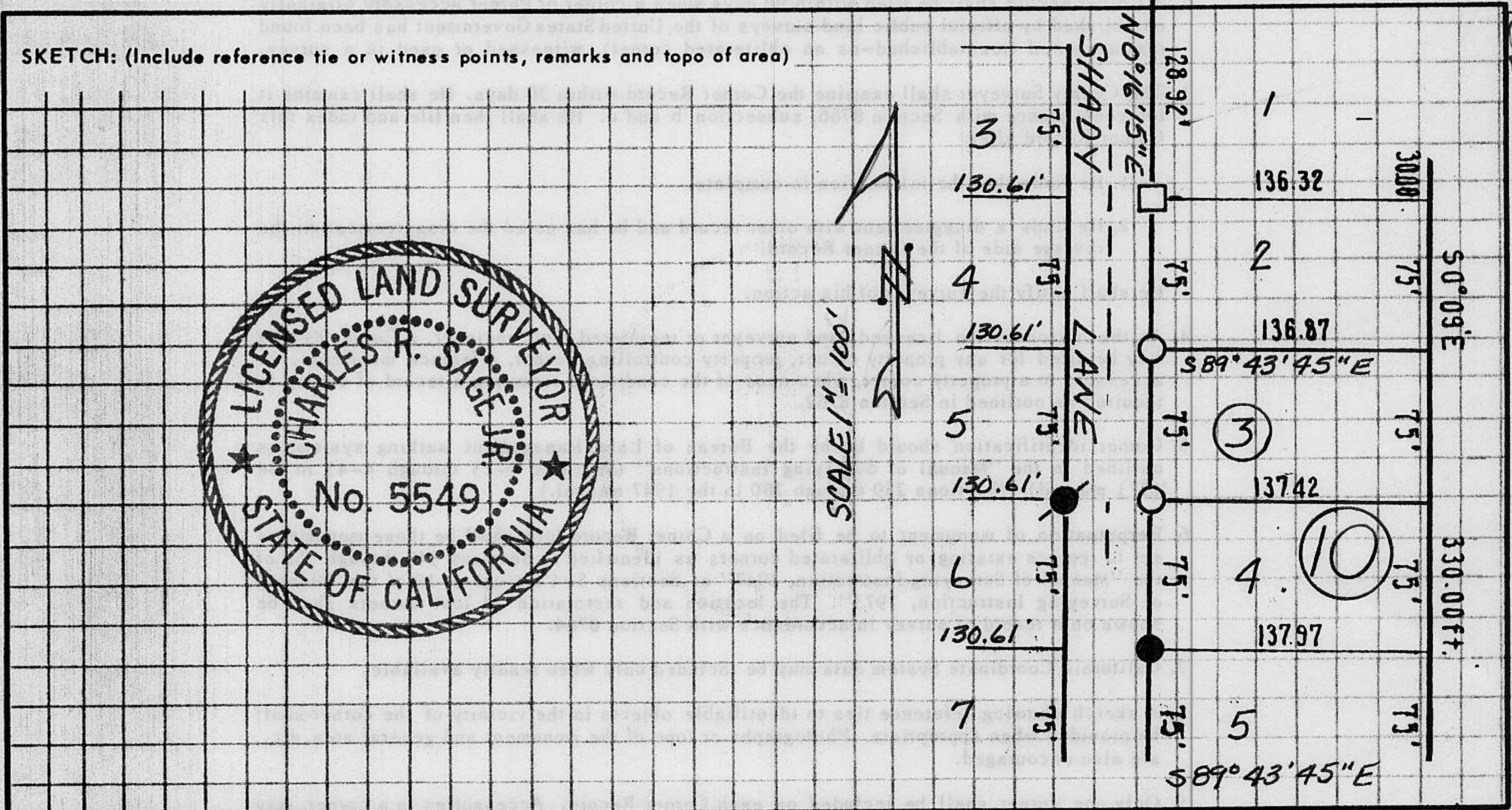
- FOUND ORIGINAL 2 X 2 HUB
- FOUND 5/8" REBAR W/PLASTIC CAP STAMPED R.C.E. 20257
- FOUND 3/4" REBAR

PHYSICAL DESCRIPTION OF MONUMENTS REBUILT OR PERPETUATED

- SET 3/4" IRON PIPE W/PLASTIC PLUG STAMPED L.S. 5549

CALIFORNIA COORDINATE SYSTEM ORDER: FIRST SECOND THIRD
 STATIONS USED: NGS (USC & GS) STATE COUNTY OTHER STATION STATION
 ZONE ELEVATION NORTHINGS (Y) EASTINGS (X)

SKETCH: (Include reference tie or witness points, remarks and topo of area)



Book 2, CORNER RECORDS, PAGE 154

JN: 9087 SURVEYOR'S CERTIFICATE
 THIS CORNER RECORD WAS PREPARED BY ME OR UNDER MY DIRECTION IN CONFORMANCE WITH THE LAND SURVEYORS ACT ON 6-7 1990
 SIGNED: Charles R. Sage, Jr.
 L.S. or R.C.E. No.: L.S. 5549 EXP. 6-30-93
 SEAL

COUNTY SURVEYOR'S CERTIFICATE
 THIS CORNER RECORD WAS RECEIVED 12/15 1991
 AND EXAMINED AND FILED 6/15 1992
 BY: Bruce L. McDaniel
 TITLE: DEPUTY COUNTY SURVEYOR
 DOCUMENT No.
 STATEMENT ON BACK OF SHEET YES NO