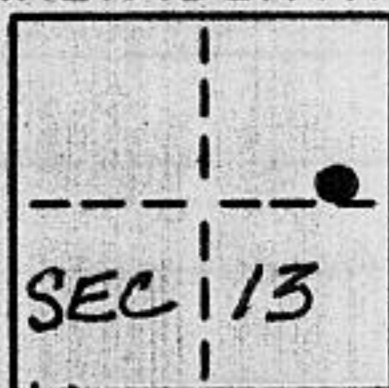


CORNER RECORD

COUNTY OF PLACER T. 15N. R. 16E. M.D. _____ MERIDIAN CALIFORNIA

CORNER TYPE: GOV'T. CORNER MEANDER RANCHO CONTROL OTHER
 CORNER IDENTIFICATION - DATE OF VISIT June 1, 1990



LOT 7, TAHOE WOODS UNIT NO. 1
 BOOK "I" OF MAPS AT PAGE 30

CORNER - LEFT AS FOUND FOUND AND TAGGED REESTABLISHED OBLITERATED CORNER REBUILT

PHYSICAL DESCRIPTION OF CORNER FOUND: EVIDENCE AND METHOD USED TO IDENTIFY OR REESTABLISH

- FOUND 5/8" REBAR W/TAG STAMPED L.S. 3285
- FOUND 5/8" REBAR W/TAG STAMPED R.C.E. 1581

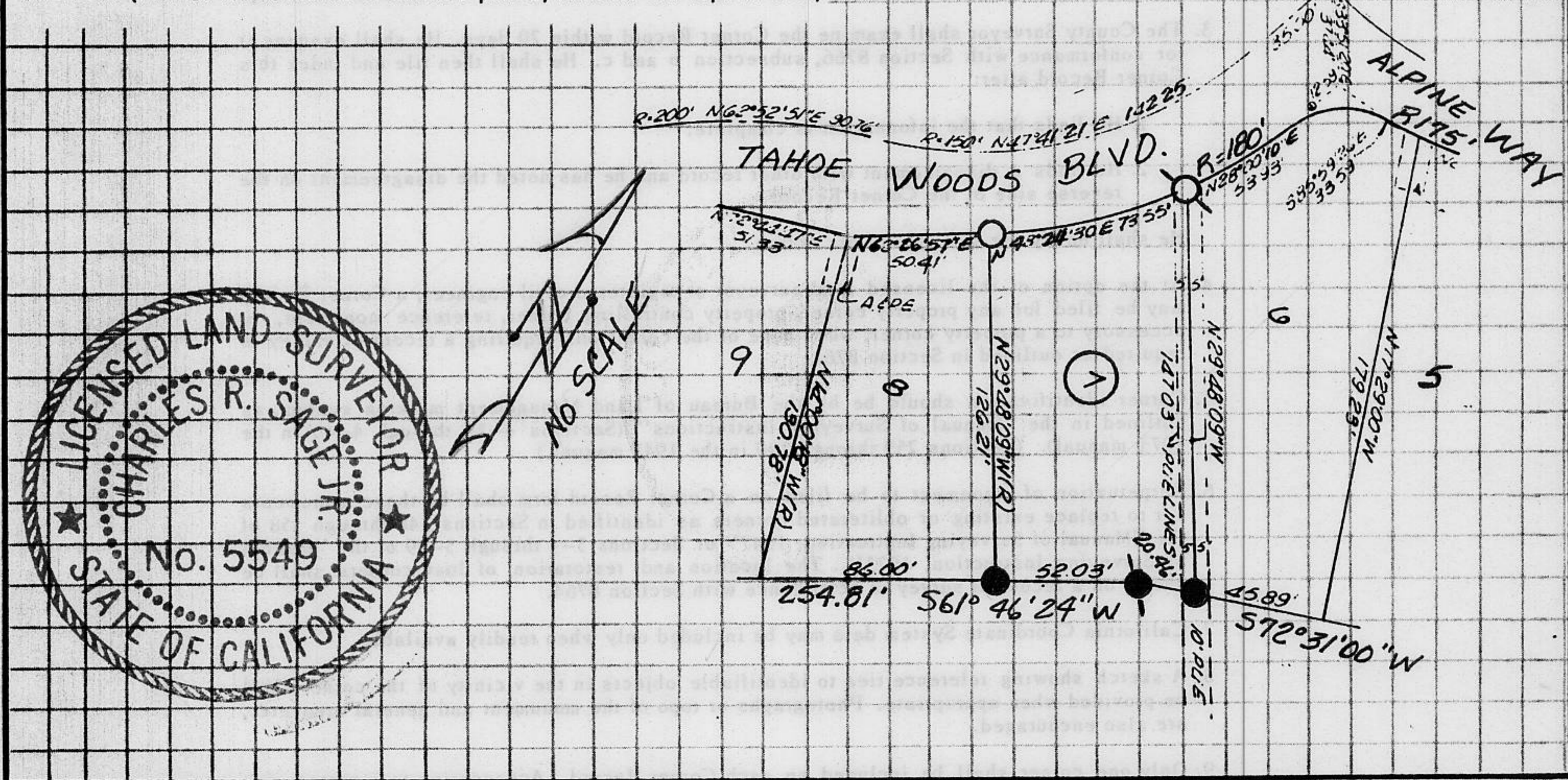
PHYSICAL DESCRIPTION OF MONUMENTS REBUILT OR PERPETUATED

- SET 3/4" IRON PIPE W/PLASTIC PLUG STAMPED L.S. 5549
- SET P.K. NAIL AND TAG STAMPED L.S. 5549

CALIFORNIA COORDINATE SYSTEM ORDER: FIRST SECOND THIRD

STATIONS USED: NGS (USC & GS) STATE COUNTY OTHER STATION _____ STATION _____
 ZONE _____ ELEVATION _____ NORTHINGS (Y) _____ EASTINGS (X) _____

SKETCH: (Include reference tie or witness points, remarks and topo of area)



JN: 90100 SURVEYOR'S CERTIFICATE
 THIS CORNER RECORD WAS PREPARED BY ME OR UNDER MY DIRECTION IN CONFORMANCE WITH THE LAND SURVEYORS ACT ON 6-13-1990
 SIGNED: Charles R. Sage Jr.
 L.S. or R.C.E. No.: L.S. 5549 EXP. 6-30-93
 SEAL

COUNTY SURVEYOR'S CERTIFICATE
 THIS CORNER RECORD WAS RECEIVED 12/15 1991 AND EXAMINED AND FILED 6/5 1992
 BY: Dani J. McDaniel
 TITLE: DEPUTY COUNTY SURVEYOR
 DOCUMENT No. _____
 STATEMENT ON BACK OF SHEET YES NO

Book 2, CORNER RECORDS, PAGE 155