

CORNER RECORD

COUNTY OF PLACER T. 16 N. R. 17 E M.D.B. 4 MERIDIAN CALIFORNIA

CORNER TYPE: GOV'T. CORNER MEANDER RANCHO CONTROL OTHER

CORNER IDENTIFICATION - DATE OF VISIT 6-6 1990



*LOT 17, BLOCK "F", HIGHLANDS UNIT NO. 3
BOOK "G" OF MAPS AT PAGE 38*

CORNER - LEFT AS FOUND FOUND AND TAGGED REESTABLISHED OBLITERATED CORNER REBUILT

PHYSICAL DESCRIPTION OF CORNER FOUND: EVIDENCE AND METHOD USED TO IDENTIFY OR REESTABLISH

- FOUND 1/8" REBAR, NO REFERENCE
- FOUND 5/8" REBAR, NO REFERENCE.
- FOUND 3/4" REBAR "DISTURBED", NO REFERENCE.

PHYSICAL DESCRIPTION OF MONUMENTS REBUILT OR PERPETUATED

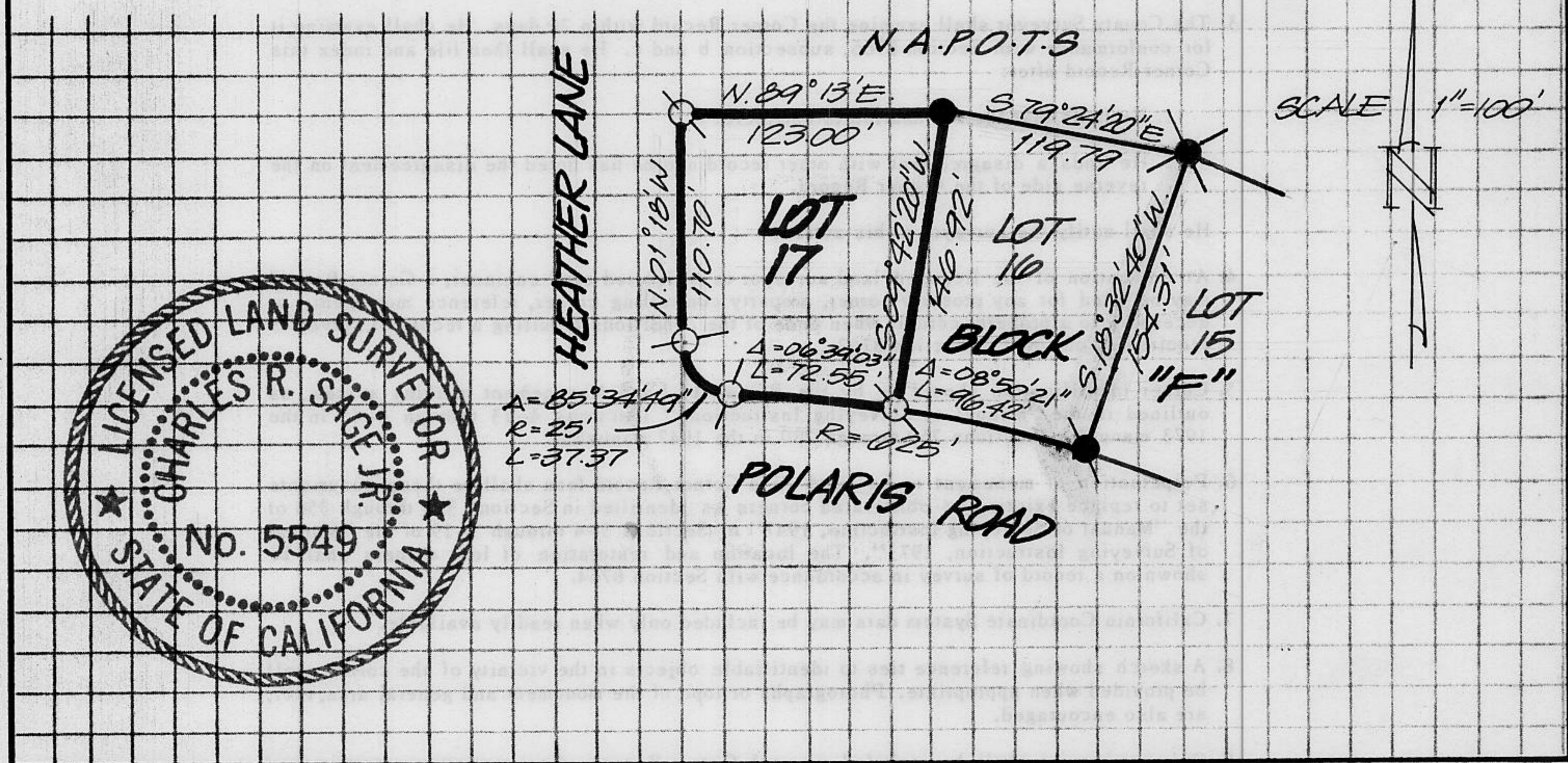
○ SET 3/4" IRON PIPE W/ PLASTIC PLUG STAMPED L.S. 5549.

CALIFORNIA COORDINATE SYSTEM ORDER: FIRST SECOND THIRD

STATIONS USED: NGS (USC & GS) STATE COUNTY OTHER STATION _____ STATION _____

ZONE _____ ELEVATION _____ NORTHINGS (Y) _____ EASTINGS (X) _____

SKETCH: (Include reference tie or witness points, remarks and topo of area)



JN: 9091
SURVEYOR'S CERTIFICATE
 THIS CORNER RECORD WAS PREPARED BY ME OR UNDER MY DIRECTION IN CONFORMANCE WITH THE LAND SURVEYORS ACT ON 6-13 1990
 SIGNED: Charles R. Sage Jr.
 L.S. or R.C.E. No.: L.S. 5549 6-30-93
 SEAL

COUNTY SURVEYOR'S CERTIFICATE
 THIS CORNER RECORD WAS RECEIVED 12/15 1991
 AND EXAMINED AND FILED 6/5 1992
 BY: Dani J. McDaniel
 TITLE: DEPUTY COUNTY SURVEYOR
 DOCUMENT No. _____
 STATEMENT ON BACK OF SHEET
 YES NO

Book 2, CORNER RECORDS, PAGE 156