

CORNER RECORD

COUNTY OF PLACER T. 15 N. R. 10 E. M.D. M.D. MERIDIAN CALIFORNIA

CORNER TYPE: GOV'T. CORNER MEANDER RANCHO CONTROL OTHER
 CORNER IDENTIFICATION - DATE OF VISIT JUNE 25, 1990



LOT 67 BEAR CREEK ASSOC. SUB'D.
BOOK "H" OF MAPS AT PAGE 19

CORNER - LEFT AS FOUND FOUND AND TAGGED REESTABLISHED OBLITERATED CORNER REBUILT

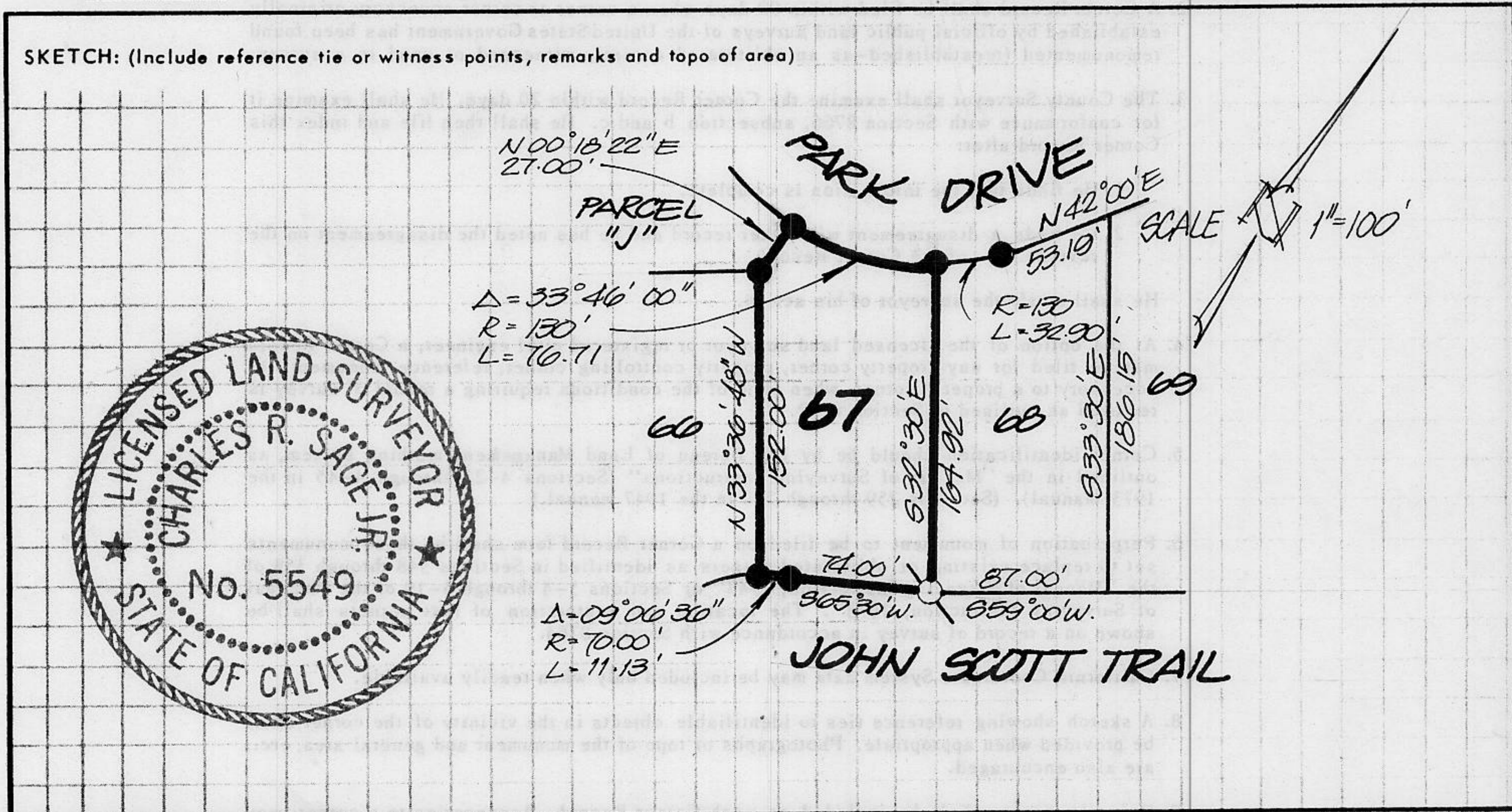
PHYSICAL DESCRIPTION OF CORNER FOUND: EVIDENCE AND METHOD USED TO IDENTIFY OR REESTABLISH
● FOUND 5/8" REBAR, NO REFERENCE.

PHYSICAL DESCRIPTION OF MONUMENTS REBUILT OR PERPETUATED

○ SET 3/4" IRON PIPE W/ PLASTIC PLUG STAMPED L.S. 5549.

CALIFORNIA COORDINATE SYSTEM ORDER: FIRST SECOND THIRD
 STATIONS USED: NGS (USC & GS) STATE COUNTY OTHER STATION _____ STATION _____
 ZONE _____ ELEVATION _____ NORTHINGS (Y) _____ EASTINGS (X) _____

SKETCH: (Include reference tie or witness points, remarks and topo of area)



BOOK 2, CORNER RECORDS, PAGE 161

JN 90116 SURVEYOR'S CERTIFICATE
 THIS CORNER RECORD WAS PREPARED BY ME OR UNDER MY DIRECTION IN CONFORMANCE WITH THE LAND SURVEYORS ACT ON 7-6 19 90
 SIGNED: Charles R. Sage, Jr.
 L.S. or R.C.E. No.: L.S. 5549 EXP. 6-30-93
 SEAL

COUNTY SURVEYOR'S CERTIFICATE
 THIS CORNER RECORD WAS RECEIVED 12/15 19 91
 AND EXAMINED AND FILED 6/5 19 92
 BY: Bruce F. McDaniel
 TITLE: DEPUTY COUNTY SURVEYOR
 DOCUMENT No. _____
 STATEMENT ON BACK OF SHEET YES NO