

CORNER RECORD

COUNTY OF PLACER T. 17N. R. 14E. M.D. _____ MERIDIAN CALIFORNIA

CORNER TYPE: GOV'T. CORNER MEANDER RANCHO CONTROL OTHER

CORNER IDENTIFICATION - DATE OF VISIT July 23, 1990



LOT 1, BLOCK "B" ICE LAKES NO. 2
BOOK "G" OF MAPS AT PAGE 1

CORNER - LEFT AS FOUND FOUND AND TAGGED REESTABLISHED OBLITERATED CORNER REBUILT

PHYSICAL DESCRIPTION OF CORNER FOUND: EVIDENCE AND METHOD USED TO IDENTIFY OR REESTABLISH _____

- FOUND 3/4" SPIRALED REBAR
- FOUND 1/2" REBAR IN CENTER OF 6" DIA. METAL CASING
- FOUND 6" DIA. COFFEE CAN FULL OF CONC. W/NAIL & TAG IN CENTER, STAMPED L.S. 2089

PHYSICAL DESCRIPTION OF MONUMENTS REBUILT OR PERPETUATED _____

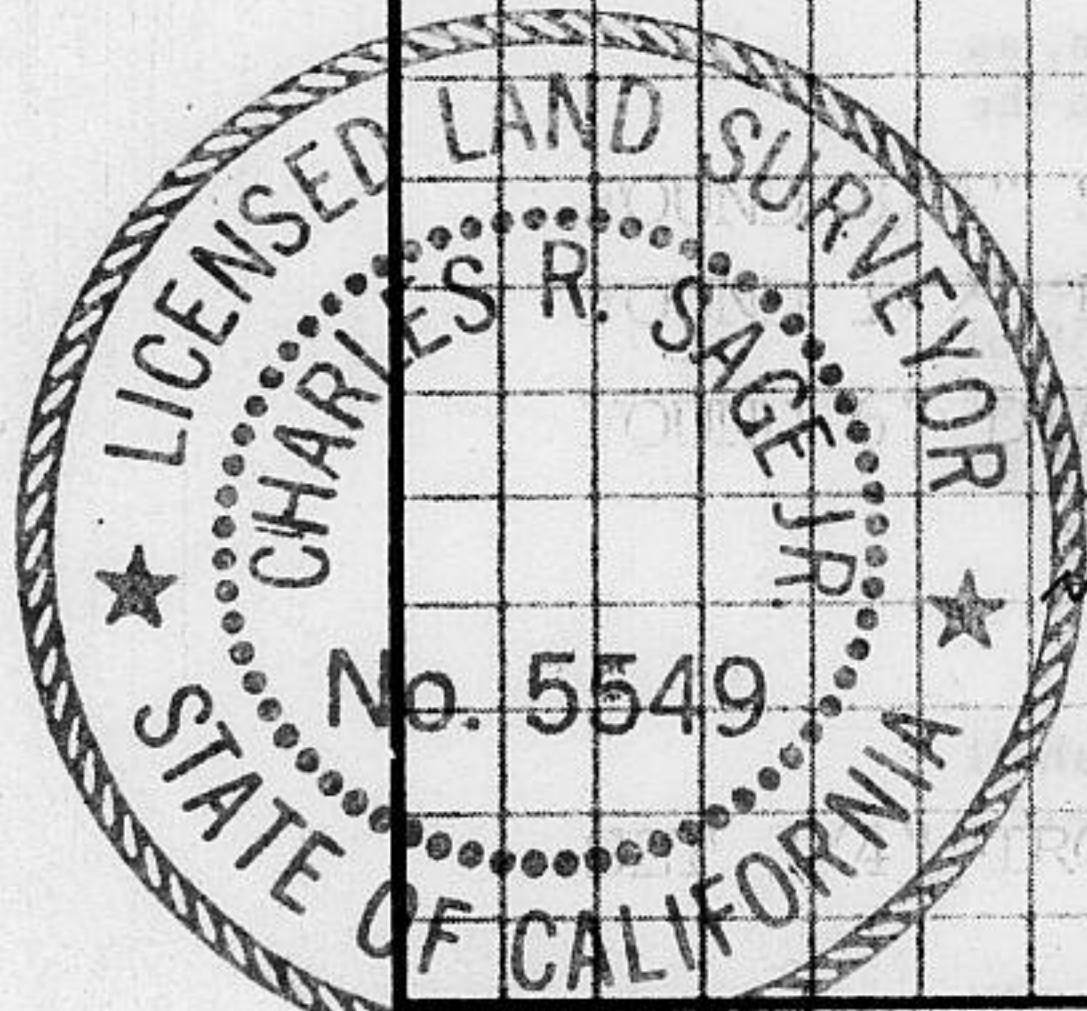
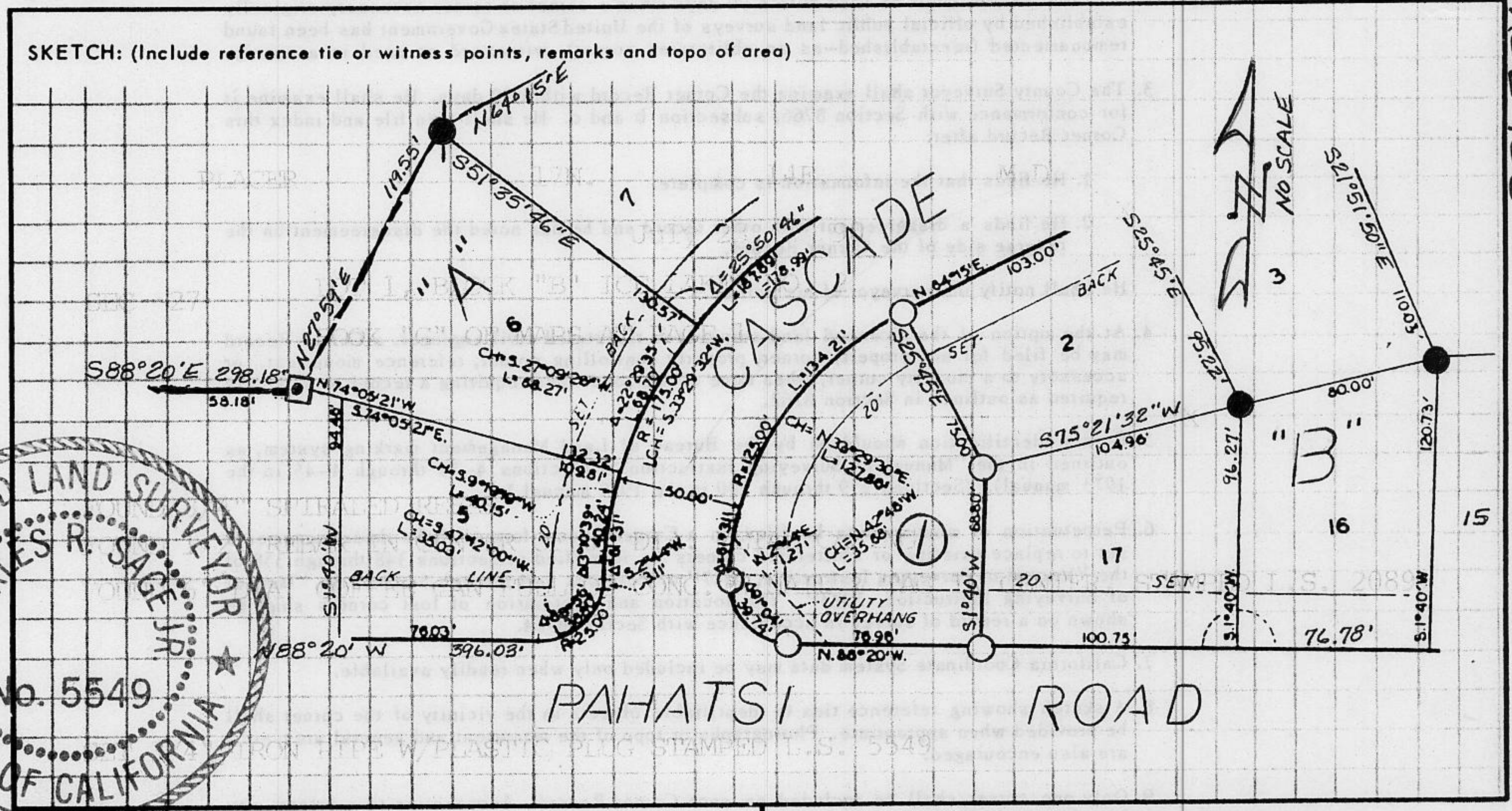
- SET 3/4" IRON PIPE W/PLASTIC PLUG STAMPED L.S. 5549

CALIFORNIA COORDINATE SYSTEM ORDER: FIRST SECOND THIRD

STATIONS USED: NGS (USC & GS) STATE COUNTY OTHER STATION _____ STATION _____

ZONE _____ ELEVATION _____ NORTHINGS (Y) _____ EASTINGS (X) _____

SKETCH: (Include reference tie or witness points, remarks and topo of area)



JN: #90142 **SURVEYOR'S CERTIFICATE**
 THIS CORNER RECORD WAS PREPARED BY ME OR UNDER MY DIRECTION IN CONFORMANCE WITH THE LAND SURVEYORS ACT ON 7-26 19 90
 SIGNED: Charles R. Sage, Jr.
 L.S. or R.C.E. No.: L.S. 5549 EXP. 6-30-93
 SEAL

COUNTY SURVEYOR'S CERTIFICATE
 THIS CORNER RECORD WAS RECEIVED 12/15 19 91
 AND EXAMINED AND FILED 6/5 19 92
 BY: Bruce R. McDaniel
 TITLE: DEPUTY COUNTY SURVEYOR
 DOCUMENT No. _____
 STATEMENT ON BACK OF SHEET YES NO

BOOK 2, CORNER RECORDS, PAGE 163