

CORNER RECORD

COUNTY OF PLACER T. 17N. R. 14E. M.D. MERIDIAN CALIFORNIA

CORNER TYPE: GOV'T. CORNER MEANDER RANCHO CONTROL OTHER
 CORNER IDENTIFICATION - DATE OF VISIT July 20, 1990



LOT 35, BLOCK "F" ICE LAKES UNIT NO. 2
 BOOK "G" OF MAPS AT PAGE 1

CORNER - LEFT AS FOUND FOUND AND TAGGED REESTABLISHED OBLITERATED CORNER REBUILT

PHYSICAL DESCRIPTION OF CORNER FOUND: EVIDENCE AND METHOD USED TO IDENTIFY OR REESTABLISH

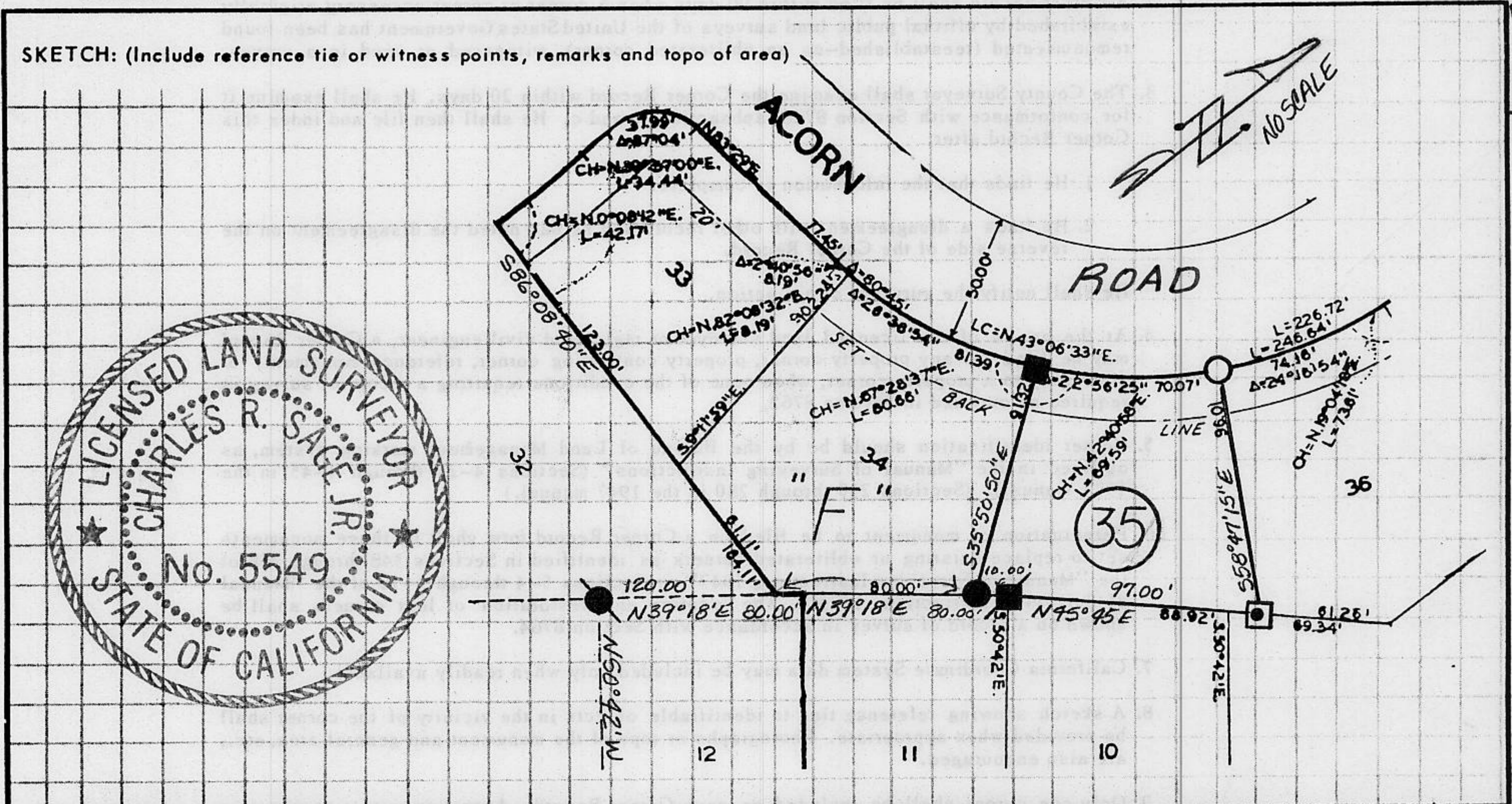
- FOUND 3/4" STEEL PIN
- FOUND 2x2 HUB W/TAG STAMPED L.S. 2089

PHYSICAL DESCRIPTION OF MONUMENTS REBUILT OR PERPETUATED

- SET 3/4" IRON PIPE W/PLASTIC PLUG STAMPED L.S. 5549
- ◻ SET 1/2" REBAR INSIDE 3/4" IRON PIPE, WIRED TAG TO REBAR STAMPED L.S. 5549
- FOUND 2x2 HUB, SET 3/4" IRON PIPE W/PLASTIC PLUG STAMPED L.S. 5549 IN HUB HOLE
- SET 3/4" STEEL PIN IN FOUND HUB HOLE, HUB HAD TAG STAMPED L.S. 2089

CALIFORNIA COORDINATE SYSTEM ORDER: FIRST SECOND THIRD
 STATIONS USED: NGS (USC & GS) STATE COUNTY OTHER STATION STATION
 ZONE ELEVATION NORTHINGS (Y) EASTINGS (X)

SKETCH: (Include reference tie or witness points, remarks and topo of area)



JN: 90146 **SURVEYOR'S CERTIFICATE**
 THIS CORNER RECORD WAS PREPARED BY ME OR UNDER MY DIRECTION IN CONFORMANCE WITH THE LAND SURVEYORS ACT ON 7-26 1990
 SIGNED: Charles R. Sage Jr.
 L.S. or R.C.E. No.: L.S. 5549 EXP. 6-30-93
 SEAL

COUNTY SURVEYOR'S CERTIFICATE
 THIS CORNER RECORD WAS RECEIVED 12/15 1991 AND EXAMINED AND FILED 6/5 1992
 BY: Brian J. McDaniel
 TITLE: DEPUTY COUNTY SURVEYOR
 DOCUMENT No.
 STATEMENT ON BACK OF SHEET YES NO

Book 2, Corner Records, Page 164