

CORNER RECORD

COUNTY OF PLACER T. 16 N. R. 17 E. M.D. MERIDIAN CALIFORNIA

CORNER TYPE: GOV'T. CORNER MEANDER RANCHO CONTROL OTHER
 CORNER IDENTIFICATION - DATE OF VISIT July 11, 1991



LOT 17, 18, 19 & 20, BLOCK "I", WOODVISTA SUBDIVISION
 BOOK "D" OF MAPS AT PAGE 12

CORNER - LEFT AS FOUND FOUND AND TAGGED REESTABLISHED OBLITERATED CORNER REBUILT

PHYSICAL DESCRIPTION OF CORNER FOUND: EVIDENCE AND METHOD USED TO IDENTIFY OR REESTABLISH

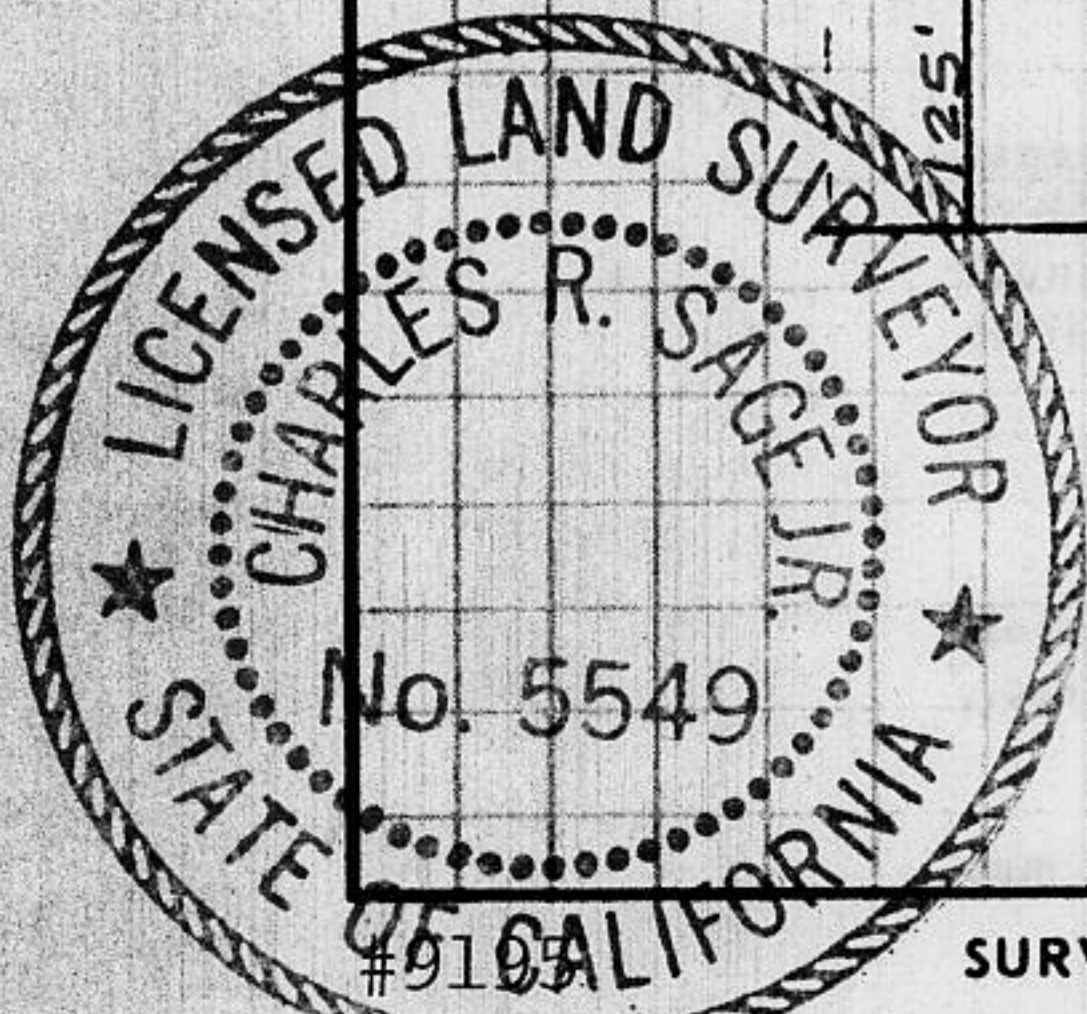
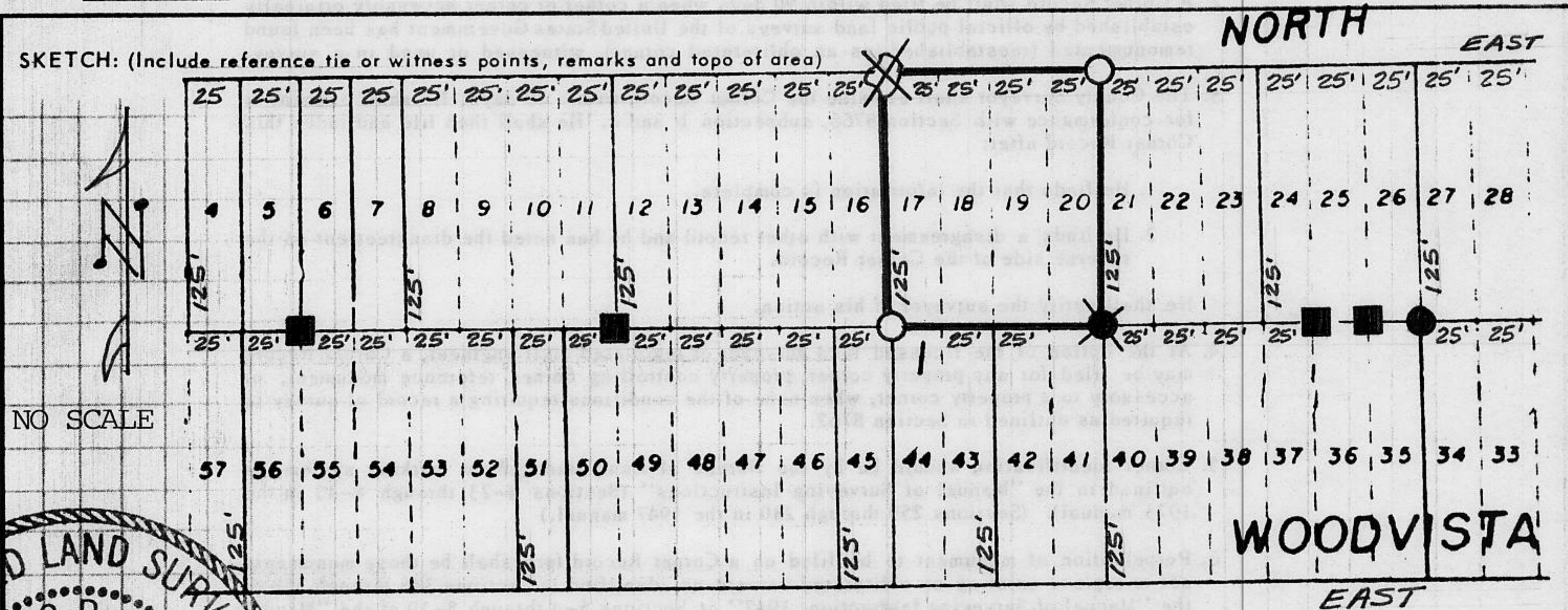
- FOUND 1/2" REBAR
- FOUND 1/2" REBAR WITH TAG STAMPED L.S. 3472
- FOUND 2 X 2 HUB
- FOUND CHISELED CROSS ON ROCK

PHYSICAL DESCRIPTION OF MONUMENTS REBUILT OR PERPETUATED

- SET 3/4" IRON PIPE WITH PLASTIC PLUG STAMPED L.S. 5549

CALIFORNIA COORDINATE SYSTEM ORDER: FIRST SECOND THIRD
 STATIONS USED: NGS (USC & GS) STATE COUNTY OTHER STATION _____ STATION _____
 ZONE _____ ELEVATION _____ NORTHINGS (Y) _____ EASTINGS (X) _____

SKETCH: (Include reference tie or witness points, remarks and topo of area)



SURVEYOR'S CERTIFICATE

THIS CORNER RECORD WAS PREPARED BY ME OR UNDER MY DIRECTION IN CONFORMANCE WITH THE LAND SURVEYORS ACT ON 7-29 19 91

SIGNED: Charles R. Sage Jr.

L.S. or R.C.E. No.: L.S. 5549 Exp. 06/30/93

SEAL

COUNTY SURVEYOR'S CERTIFICATE

THIS CORNER RECORD WAS RECEIVED 12/15 19 91
 AND EXAMINED AND FILED 6/5 19 92

BY: Bruce S. McDonald
 TITLE: DEPUTY COUNTY SURVEYOR

DOCUMENT No. _____
 STATEMENT ON BACK OF SHEET

YES NO

Book 2, Corner Records, Page 168