

CORNER RECORD

COUNTY OF PLACER T. 15N. R. 16E. M.D. M.D. MERIDIAN CALIFORNIA

CORNER TYPE: GOV'T. CORNER MEANDER RANCHO CONTROL OTHER

CORNER IDENTIFICATION - DATE OF VISIT July 25, 1990



LOT 40, BLOCK "P" LAKE TAHOE PARK SUBDIVISION NO. 1
BOOK "D" OF MAPS AT PAGE 17

CORNER - LEFT AS FOUND FOUND AND TAGGED REESTABLISHED OBLITERATED CORNER REBUILT

PHYSICAL DESCRIPTION OF CORNER FOUND: EVIDENCE AND METHOD USED TO IDENTIFY OR REESTABLISH

- FOUND 5/8" REBAR
- FOUND 3/4" IRON PIPE W/PLASTIC PLUG STAMPED L.S. 5549

PHYSICAL DESCRIPTION OF MONUMENTS REBUILT OR PERPETUATED

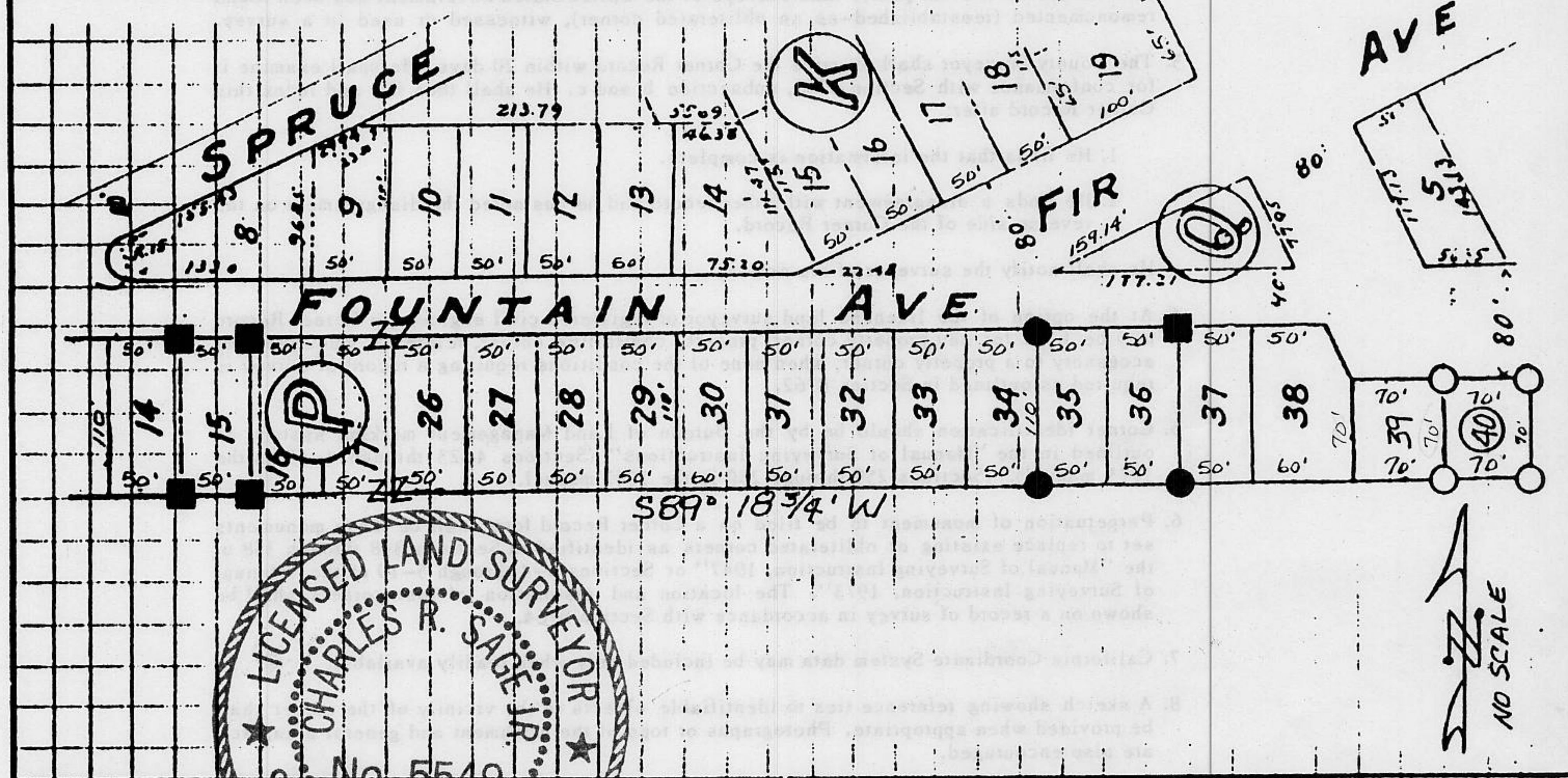
- SET 3/4" IRON PIPE WITH PLASTIC PLUG STAMPED L.S. 5549

CALIFORNIA COORDINATE SYSTEM ORDER: FIRST SECOND THIRD

STATIONS USED: NGS (USC & GS) STATE COUNTY OTHER STATION _____ STATION _____

ZONE _____ ELEVATION _____ NORTHINGS (Y) _____ EASTINGS (X) _____

SKETCH: (Include reference tie or witness points, remarks and topo of area)



JN: 90143

SURVEYOR'S CERTIFICATE

THIS CORNER RECORD WAS PREPARED BY ME OR UNDER MY DIRECTION IN CONFORMANCE WITH THE LAND SURVEYORS ACT ON 8-13 1990

SIGNED: Charles R. Sage Jr.

L.S. or R.C.E. No.: L.S. 5549 EXP. 6-30-93

SEAL

COUNTY SURVEYOR'S CERTIFICATE

THIS CORNER RECORD WAS RECEIVED 12/15 1991
AND EXAMINED AND FILED 6/5 1992

BY: Bari L. McDaniel
TITLE: DEPUTY COUNTY SURVEYOR

DOCUMENT No. _____

STATEMENT ON BACK OF SHEET

YES NO

Book 2, Corner Records, Page 169