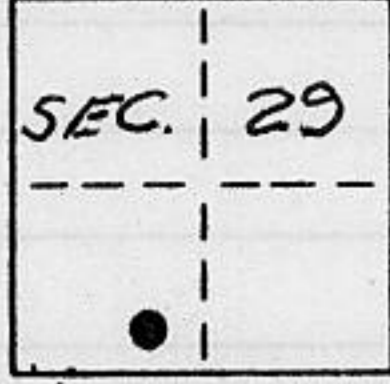


**CORNER RECORD**

COUNTY OF PLACER T. 17N. R. 17E. M.D. MERIDIAN CALIFORNIA

CORNER TYPE: GOV'T. CORNER  MEANDER  RANCHO  CONTROL  OTHER

CORNER IDENTIFICATION - DATE OF VISIT OCT. 1, 1990



LOT 241 NORTHSTAR UNIT 6-A  
BOOK "K" OF MAPS AT PAGE 2

CORNER - LEFT AS FOUND  FOUND AND TAGGED  REESTABLISHED OBLITERATED CORNER  REBUILT

PHYSICAL DESCRIPTION OF CORNER FOUND: EVIDENCE AND METHOD USED TO IDENTIFY OR REESTABLISH

- FOUND 5/8" REBAR W/TAG STAMPED L.S. 3383
- FOUND BRIDGE SPIKE

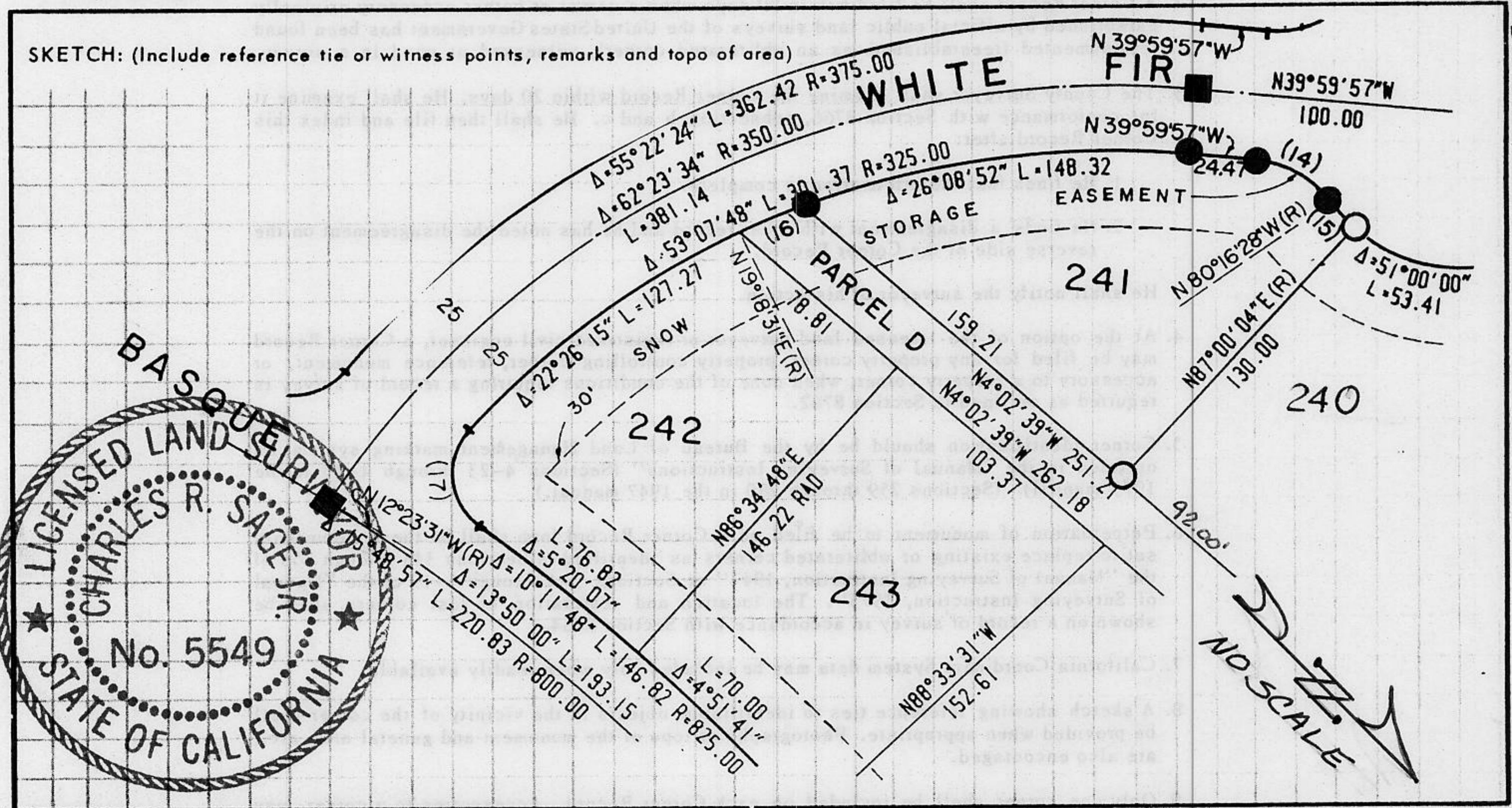
PHYSICAL DESCRIPTION OF MONUMENTS REBUILT OR PERPETUATED

○ SET 3/4" IRON PIPE W/PLASTIC PLUG STAMPED L.S. 5549

CALIFORNIA COORDINATE SYSTEM ORDER: FIRST  SECOND  THIRD

STATIONS USED: NGS (USC & GS)  STATE  COUNTY  OTHER  STATION \_\_\_\_\_ STATION \_\_\_\_\_

ZONE \_\_\_\_\_ ELEVATION \_\_\_\_\_ NORTHINGS (Y) \_\_\_\_\_ EASTINGS (X) \_\_\_\_\_



JN:90205 **SURVEYOR'S CERTIFICATE**  
 THIS CORNER RECORD WAS PREPARED BY ME OR UNDER MY DIRECTION IN CONFORMANCE WITH THE LAND SURVEYORS ACT ON 10-9 19 90  
 SIGNED: Charles R. Sage Jr.  
 L.S. or R.C.E. No.: L.S. 5549 EXP. 6-30-93  
 SEAL

**COUNTY SURVEYOR'S CERTIFICATE**  
 THIS CORNER RECORD WAS RECEIVED 12/15 19 91  
 AND EXAMINED AND FILED 6/5 19 92  
 BY: Bari J. McDaniel  
 TITLE: DEPUTY COUNTY SURVEYOR  
 DOCUMENT No. \_\_\_\_\_  
 STATEMENT ON BACK OF SHEET YES  NO

BOOK 2, CORNER RECORDS, PAGE 174