

# CORNER RECORD

COUNTY OF PLACER T. 17N. R. 16E. M.D. \_\_\_\_\_ MERIDIAN CALIFORNIA

CORNER TYPE: GOV'T. CORNER  MEANDER  RANCHO  CONTROL  OTHER   
 CORNER IDENTIFICATION - DATE OF VISIT October 11, 1990



LOT 9, PONDEROSA RANCHOS SUBDIVISION  
 BOOK "N" OF MAPS AT PAGE 72

CORNER - LEFT AS FOUND  FOUND AND TAGGED  REESTABLISHED OBLITERATED CORNER  REBUILT

PHYSICAL DESCRIPTION OF CORNER FOUND: EVIDENCE AND METHOD USED TO IDENTIFY OR REESTABLISH \_\_\_\_\_

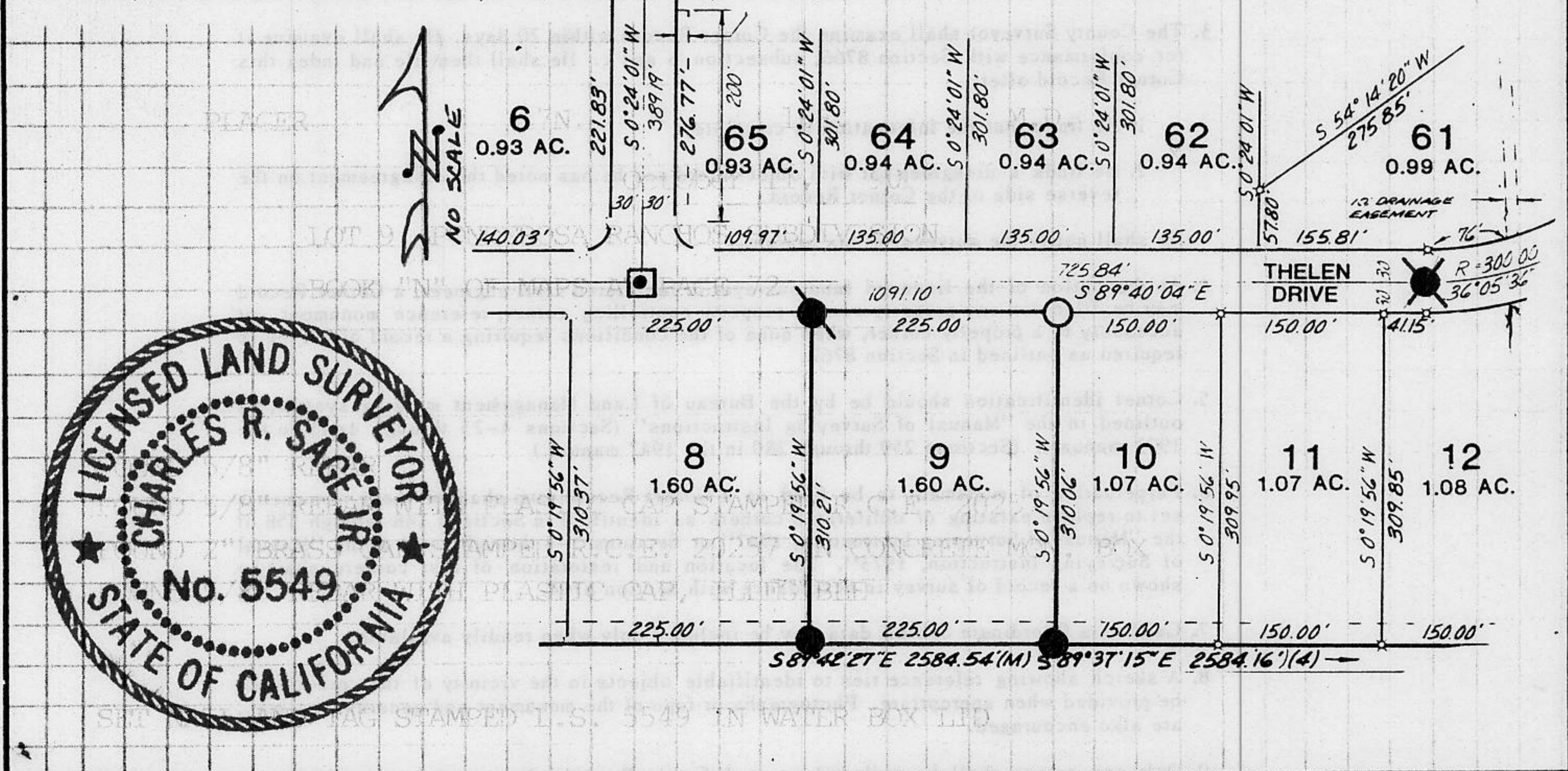
- FOUND 5/8" REBAR
- FOUND 5/8" REBAR WITH PLASTIC CAP STAMPED R.C.E. 20257
- FOUND 2" BRASS CAP STAMPED R.C.E. 20257 IN CONCRETE MON. BOX
- FOUND 5/8" REBAR WITH PLASTIC CAP, ILLEGIBLE

PHYSICAL DESCRIPTION OF MONUMENTS REBUILT OR PERPETUATED \_\_\_\_\_

- SET NAIL AND TAG STAMPED L.S. 5549 IN WATER BOX LID

CALIFORNIA COORDINATE SYSTEM ORDER: FIRST  SECOND  THIRD   
 STATIONS USED: NGS (USC & GS)  STATE  COUNTY  OTHER  STATION \_\_\_\_\_ STATION \_\_\_\_\_  
 ZONE \_\_\_\_\_ ELEVATION \_\_\_\_\_ NORTHINGS (Y) \_\_\_\_\_ EASTINGS (X) \_\_\_\_\_

SKETCH: (Include reference tie or witness points, remarks and topo of area)



JN: #90217 **SURVEYOR'S CERTIFICATE**  
 THIS CORNER RECORD WAS PREPARED BY ME OR UNDER MY DIRECTION IN CONFORMANCE WITH THE LAND SURVEYORS ACT ON 10-19 1990  
 SIGNED: Charles R. Sage Jr.  
 L.S. or R.C.E. No.: LS 5549 EXP. 6-30-93  
 SEAL

**COUNTY SURVEYOR'S CERTIFICATE**  
 THIS CORNER RECORD WAS RECEIVED 12/15 1991  
 AND EXAMINED AND FILED 6/5 1992  
 BY: Bruce J. McDaniel  
 TITLE: DEPUTY COUNTY SURVEYOR  
 DOCUMENT No. \_\_\_\_\_  
 STATEMENT ON BACK OF SHEET YES  NO

Book 2, Corner Records, Page 175