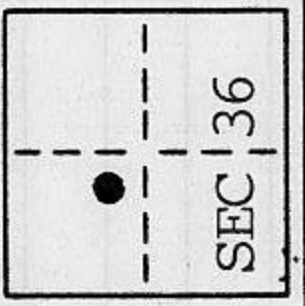


CORNER RECORD

COUNTY OF PLACER T. 15N. R. 16E. M.D. MERIDIAN CALIFORNIA
 CORNER TYPE: GOV'T. CORNER MEANDER RANCHO CONTROL OTHER
 CORNER IDENTIFICATION - DATE OF VISIT October 24, 19 90



LOT 5, BLOCK 28 TAHOE PINES SUBDIVISION
 BOOK "C" OF MAPS AT PAGE 12

CORNER - LEFT AS FOUND FOUND AND TAGGED REESTABLISHED OBLITERATED CORNER REBUILT

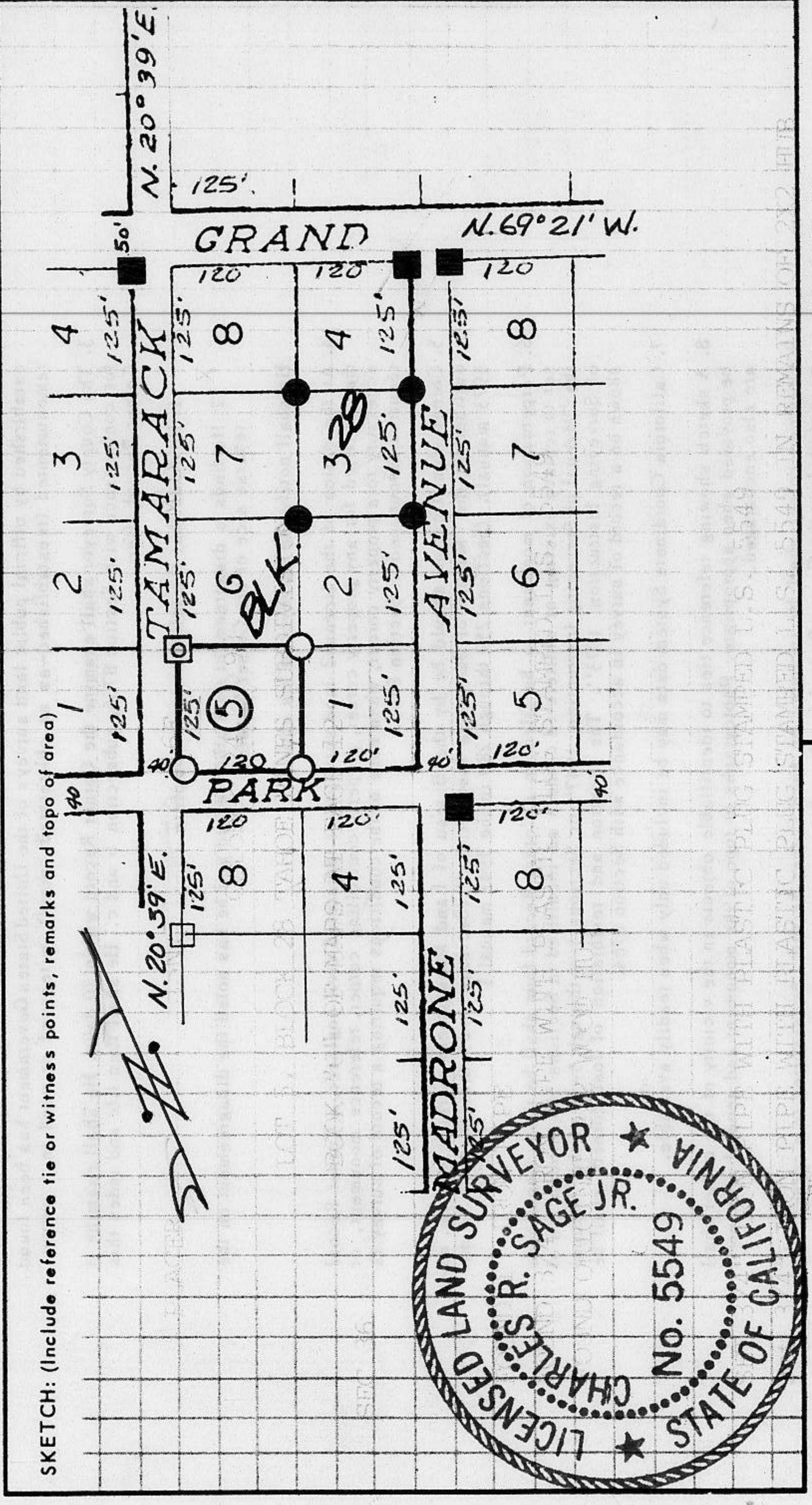
PHYSICAL DESCRIPTION OF CORNER FOUND: EVIDENCE AND METHOD USED TO IDENTIFY OR REESTABLISH

- FOUND 1" IRON PIPE
- FOUND 3/4" IRON PIPE WITH PLASTIC PLUG STAMPED L.S. 5549
- FOUND ORIGINAL 2X2 WOOD HUB

PHYSICAL DESCRIPTION OF MONUMENTS REBUILT OR PERPETUATED

- SET 3/4" IRON PIPE WITH PLASTIC PLUG STAMPED L.S. 5549
- set 3/4" IRON PIPE WITH PLASTIC PLUG STAMPED L.S. 5549 IN REMAINS OF 2X2 HUB

CALIFORNIA COORDINATE SYSTEM ORDER: FIRST SECOND THIRD
 STATIONS USED: NGS (USC & GS) STATE COUNTY OTHER STATION
 ZONE ELEVATION NORTHINGS (Y) EASTINGS (X) STATION



JN: 90227 SURVEYOR'S CERTIFICATE
 THIS CORNER RECORD WAS PREPARED BY ME OR UNDER MY DIRECTION IN CONFORMANCE WITH THE LAND SURVEYORS ACT ON 11-3 19 90
 COUNTY SURVEYOR'S CERTIFICATE
 THIS CORNER RECORD WAS RECEIVED 12/15 19 91 AND EXAMINED AND FILED 19 92
 BY: Don P. McDaniel
 TITLE: DEPUTY COUNTY SURVEYOR

SIGNED: Charles R. Sage Jr.
 L.S. or R.C.E. No.: L.S. 5549 EXP. 6-30-93
 DOCUMENT No. STATEMENT ON BACK OF SHEET
 YES NO

Book 2, CORNER RECORDS, PAGE 178