

**CORNER RECORD**

COUNTY OF PLACER T. 17 N. R. 16 E. M.D. MERIDIAN CALIFORNIA

CORNER TYPE: GOV'T. CORNER  MEANDER  RANCHO  CONTROL  OTHER   
 CORNER IDENTIFICATION - DATE OF VISIT OCT. 12 1990



**LOT 59 PONDEROSA PALISADES SOUTH NO. 1**  
**BOOK J OF MAPS AT PAGE 89**

CORNER - LEFT AS FOUND  FOUND AND TAGGED  REESTABLISHED OBLITERATED CORNER  REBUILT

PHYSICAL DESCRIPTION OF CORNER FOUND: EVIDENCE AND METHOD USED TO IDENTIFY OR REESTABLISH

- FOUND 3/4" REBAR WITH PLUG STAMPED L.S. 3332.
- FOUND 3/4" REBAR, NO REFERENCE.
- FOUND 3/4" REBAR W/ PLUG STAMPED R.C.E. 20257.

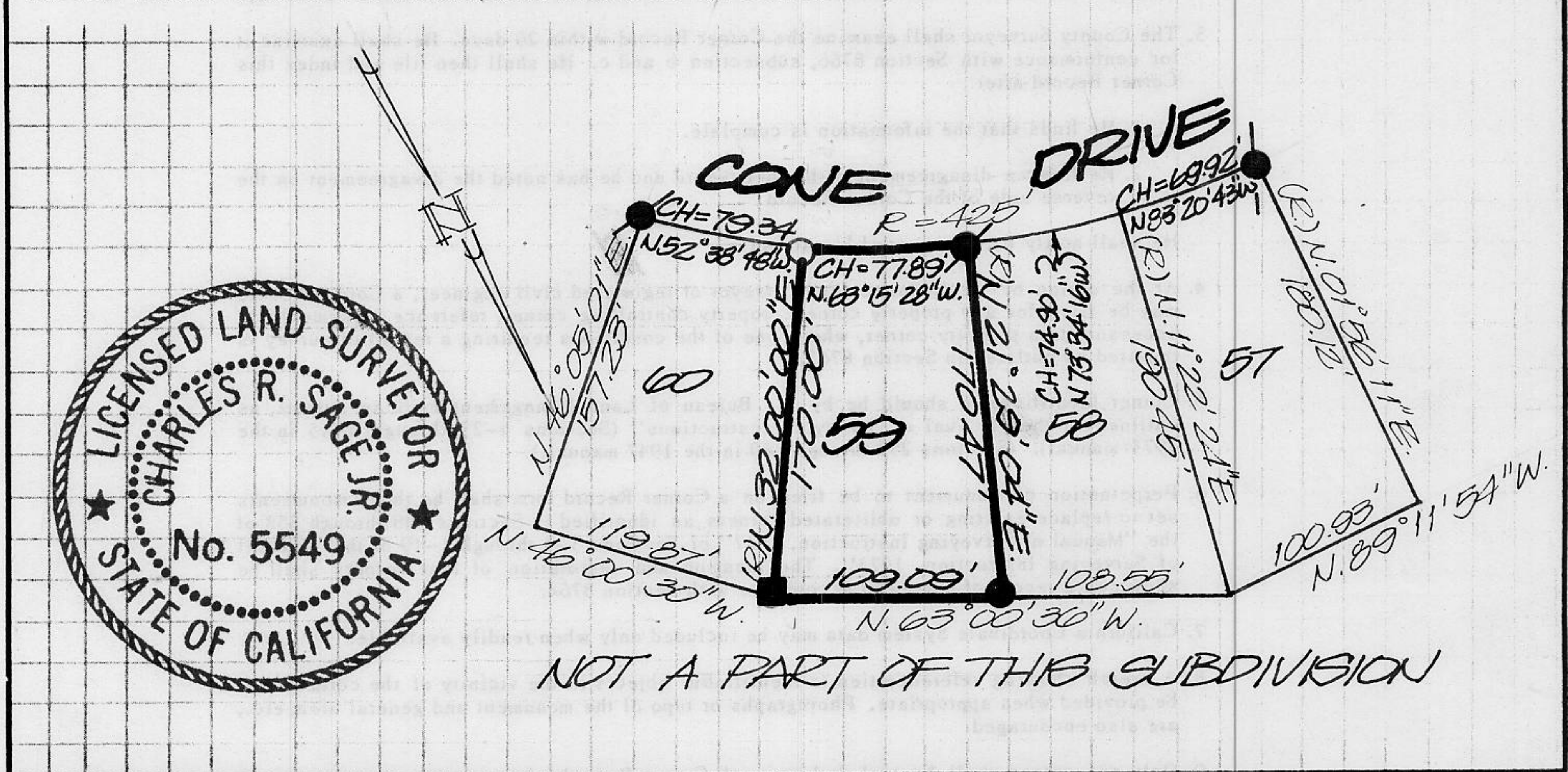
PHYSICAL DESCRIPTION OF MONUMENTS REBUILT OR PERPETUATED

- SET NAIL & TAG IN 0.8' DIA. UTILITY SERVICE.

CALIFORNIA COORDINATE SYSTEM ORDER: FIRST  SECOND  THIRD

STATIONS USED: NGS (USC & GS)  STATE  COUNTY  OTHER  STATION \_\_\_\_\_ STATION \_\_\_\_\_  
 ZONE \_\_\_\_\_ ELEVATION \_\_\_\_\_ NORTHINGS (Y) \_\_\_\_\_ EASTINGS (X) \_\_\_\_\_

SKETCH: (Include reference tie or witness points, remarks and topo of area)



**JN. 90215 SURVEYOR'S CERTIFICATE**

THIS CORNER RECORD WAS PREPARED BY ME OR UNDER MY DIRECTION IN CONFORMANCE WITH THE LAND SURVEYORS ACT ON 11-3 1990

SIGNED: Charles R. Sage Jr.

L.S. or R.C.E. No.: L.S. 5549 EXP 6-30-93

SEAL

**COUNTY SURVEYOR'S CERTIFICATE**

THIS CORNER RECORD WAS RECEIVED 12/15 1991 AND EXAMINED AND FILED 6/5 1992

BY: Bruce J. McDaniel  
 TITLE: DEPUTY COUNTY SURVEYOR

DOCUMENT No. \_\_\_\_\_  
 STATEMENT ON BACK OF SHEET

YES  NO