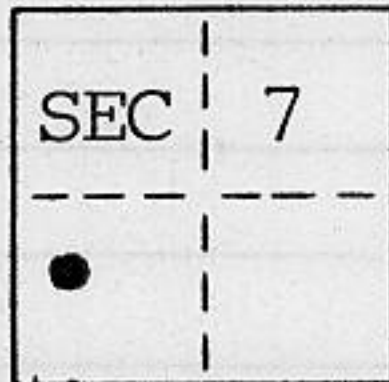


CORNER RECORD

COUNTY OF PLACER T. 14N. R. 17E. M.D. MERIDIAN CALIFORNIA

CORNER TYPE: GOV'T. CORNER MEANDER RANCHO CONTROL OTHER
 CORNER IDENTIFICATION - DATE OF VISIT 11/07 19 90



LOT 86 CHAMBERLANDS UNIT "B"
 BOOK "F" OF MAPS AT PAGE 48

CORNER - LEFT AS FOUND FOUND AND TAGGED REESTABLISHED OBLITERATED CORNER REBUILT

PHYSICAL DESCRIPTION OF CORNER FOUND: EVIDENCE AND METHOD USED TO IDENTIFY OR REESTABLISH

- FOUND 3/4" REBAR
- FOUND 1/2" REBAR

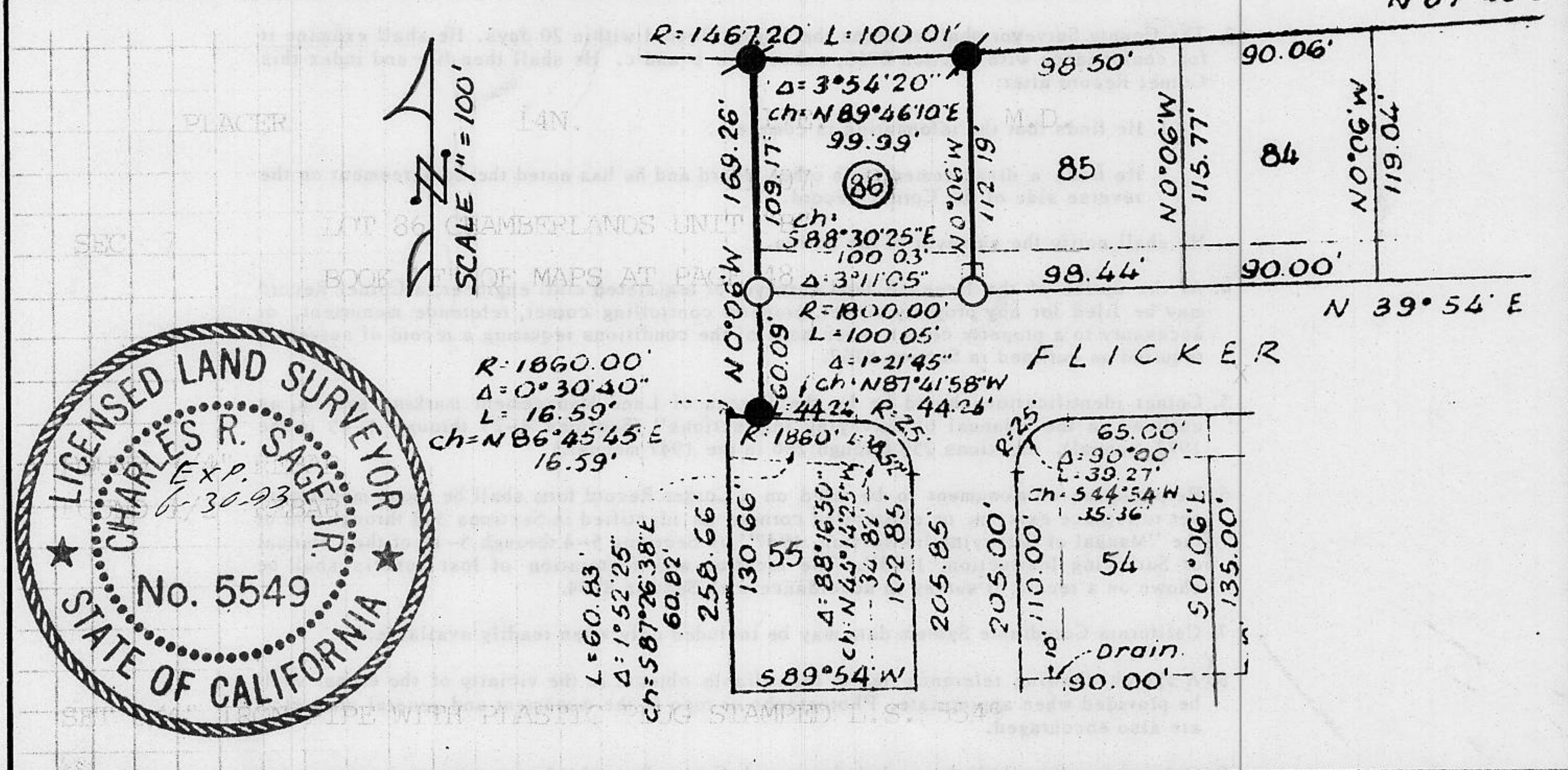
PHYSICAL DESCRIPTION OF MONUMENTS REBUILT OR PERPETUATED

- SET 3/4" IRON PIPE WITH PLASTIC PLUG STAMPED L.S. 5549

CALIFORNIA COORDINATE SYSTEM ORDER: FIRST SECOND THIRD

STATIONS USED: NGS (USC & GS) STATE COUNTY OTHER STATION STATION
 ZONE ELEVATION NORTHINGS (Y) EASTINGS (X)

SKETCH: (Include reference tie or witness points, remarks and topo of area)



JN: 90237 SURVEYOR'S CERTIFICATE
 THIS CORNER RECORD WAS PREPARED BY ME OR UNDER MY DIRECTION IN CONFORMANCE WITH THE LAND SURVEYORS ACT ON 11-19 1990
 SIGNED: Charles R. Sage Jr.
 L.S. or R.C.E. No.: L.S. 5549 EXP. 6-30-93
 SEAL

COUNTY SURVEYOR'S CERTIFICATE
 THIS CORNER RECORD WAS RECEIVED 12/15 1991 AND EXAMINED AND FILED 6/8 1992
 BY: Bruce L. McDaniel
 TITLE: DEPUTY COUNTY SURVEYOR
 DOCUMENT No.
 STATEMENT ON BACK OF SHEET YES NO

Book 2, Corner Records, Page 183