

CORNER RECORD

COUNTY OF PLACER T. 17N. R. 16E. M.D. MERIDIAN CALIFORNIA

CORNER TYPE: GOV'T. CORNER MEANDER RANCHO CONTROL OTHER

CORNER IDENTIFICATION - DATE OF VISIT DEC. 5, 1991



LOT 65 PONDEROSA RANCHOS SUBD.
BOOK "N" OF MAPS AT PAGE 72

CORNER - LEFT AS FOUND FOUND AND TAGGED REESTABLISHED OBLITERATED CORNER REBUILT

PHYSICAL DESCRIPTION OF CORNER FOUND: EVIDENCE AND METHOD USED TO IDENTIFY OR REESTABLISH

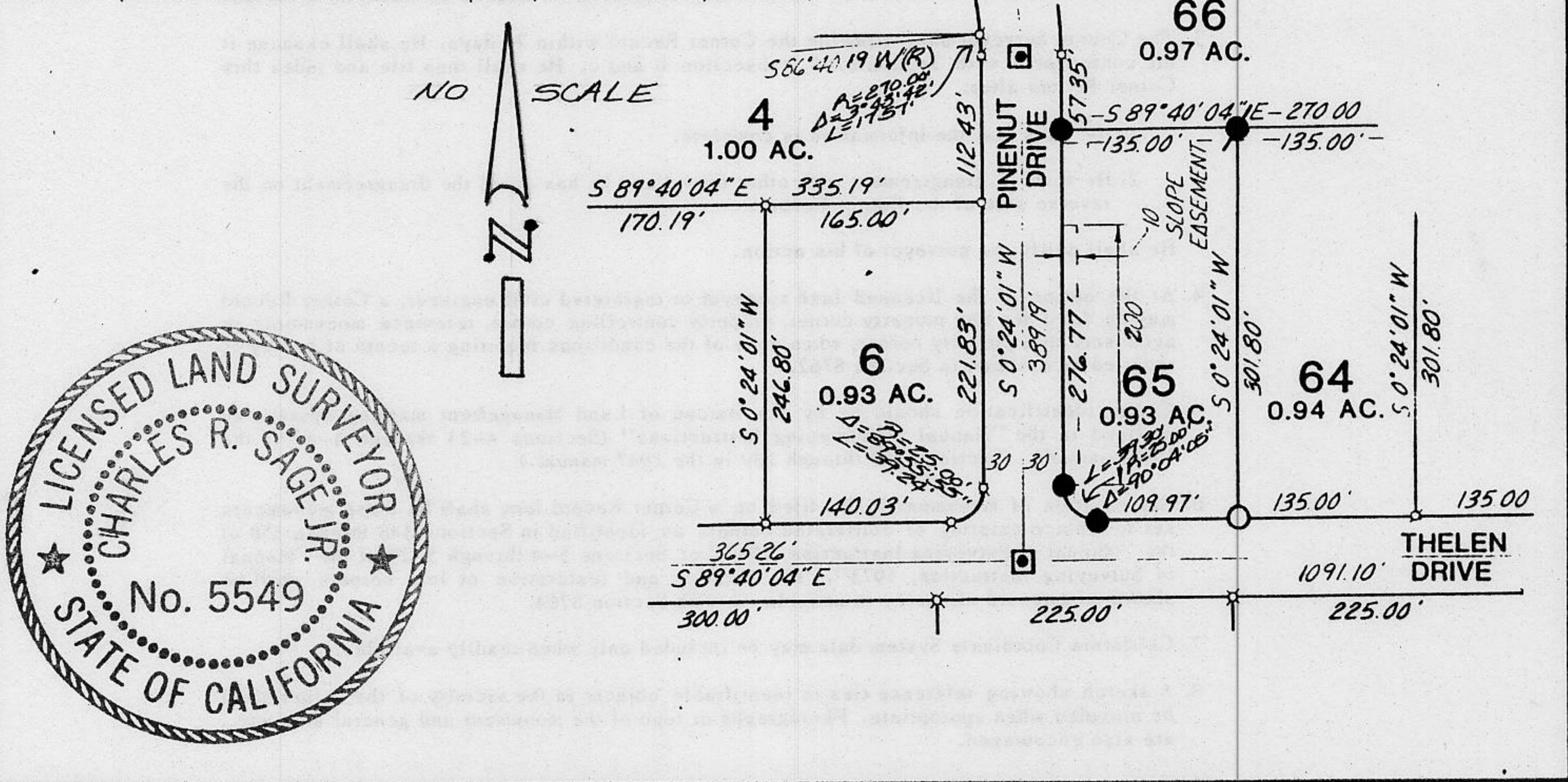
- FOUND 5/8" REBAR W/PLASTIC CAP STAMPED R.C.E. 20257
- FOUND 5/8" REBAR, NO REFERENCE
- FOUND 2" BRASS CAP STAMPED R.C.E. 20257 IN CONCRETE MON. BOX, PER BK "N" PG 72

PHYSICAL DESCRIPTION OF MONUMENTS REBUILT OR PERPETUATED

- SET 3/4" IRON PIPE W/PLASTIC PLUG STAMPED L.S. 5549

CALIFORNIA COORDINATE SYSTEM ORDER: FIRST SECOND THIRD
STATIONS USED: NGS (USC & GS) STATE COUNTY OTHER STATION _____ STATION _____
ZONE _____ ELEVATION _____ NORTHINGS (Y) _____ EASTINGS (X) _____

SKETCH: (Include reference tie or witness points, remarks and topo of area)



JN: 91203

SURVEYOR'S CERTIFICATE

THIS CORNER RECORD WAS PREPARED BY ME OR UNDER MY DIRECTION IN CONFORMANCE WITH THE LAND SURVEYORS ACT ON 5/9 19 91

SIGNED: Charles R. Sage, Jr.

L.S. or R.C.E. No.: L.S. 5549 EXP. 6-30-93

SEAL

COUNTY SURVEYOR'S CERTIFICATE

THIS CORNER RECORD WAS RECEIVED 12/15 1991 AND EXAMINED AND FILED 6/8 1992

BY: Lauri J. McDaniel
TITLE: DEPUTY COUNTY SURVEYOR

DOCUMENT No. _____
STATEMENT ON BACK OF SHEET

YES NO

Book 2, Corner Records, Page 187