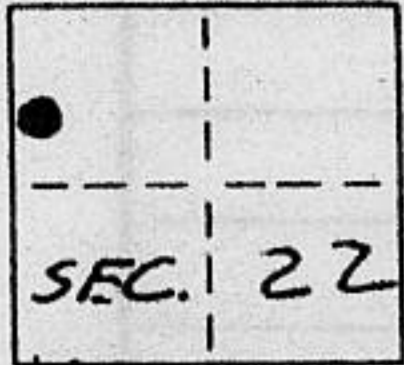


# CORNER RECORD

COUNTY OF PLACER T. 16 N R. 17 E. M.D. MERIDIAN CALIFORNIA

CORNER TYPE: GOV'T. CORNER  MEANDER  RANCHO  CONTROL  OTHER

CORNER IDENTIFICATION - DATE OF VISIT 9-30 19 88



**LOT 13 BLOCK 'B' CARNELIAN BAY SUB.  
BK. 'C' MAPS PG. 14**

CORNER - LEFT AS FOUND  FOUND AND TAGGED  REESTABLISHED OBLITERATED CORNER  REBUILT

PHYSICAL DESCRIPTION OF CORNER FOUND: EVIDENCE AND METHOD USED TO IDENTIFY OR REESTABLISH

- = FOUND COPPER WELD MON. PER 5/SURV./131
- = FOUND 3" PLA. CO. BRASS CAP PER 5/SURV./131

PHYSICAL DESCRIPTION OF MONUMENTS REBUILT OR PERPETUATED

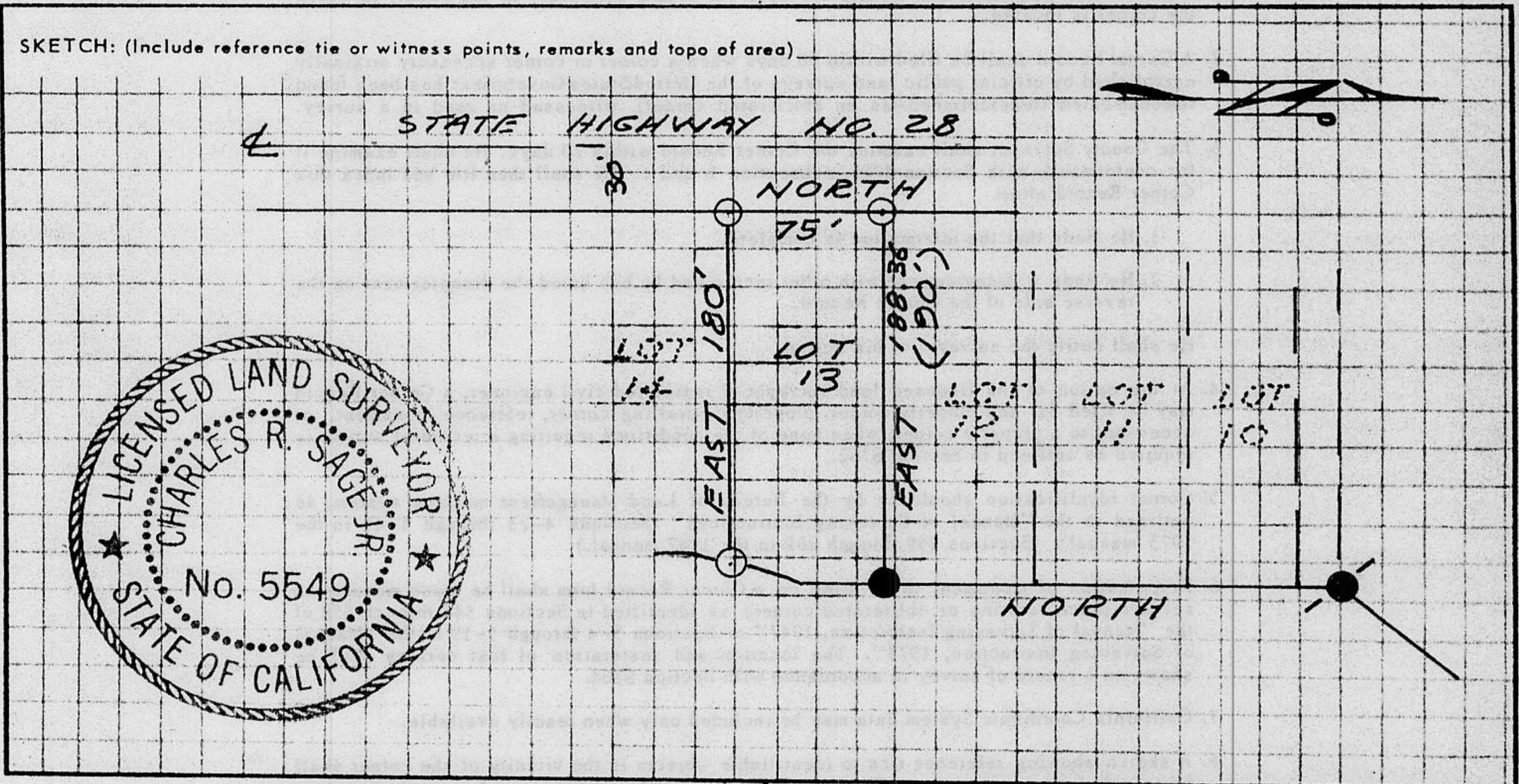
- = SET 3/4" IRON PIPE W/PLASTIC PLUG STAMPED L.S. 5549

CALIFORNIA COORDINATE SYSTEM ORDER: FIRST  SECOND  THIRD

STATIONS USED: NGS (USC & GS)  STATE  COUNTY  OTHER  STATION \_\_\_\_\_ STATION \_\_\_\_\_

ZONE \_\_\_\_\_ ELEVATION \_\_\_\_\_ NORTHINGS (Y) \_\_\_\_\_ EASTINGS (X) \_\_\_\_\_

SKETCH: (Include reference tie or witness points, remarks and topo of area)



### SURVEYOR'S CERTIFICATE

THIS CORNER RECORD WAS PREPARED BY ME OR UNDER MY DIRECTION IN CONFORMANCE WITH THE LAND SURVEYORS ACT ON 10-3 19 88

SIGNED: Charles R. Sage Jr.

L.S. or R.C.E. No.: L.S. 5549 EXP. 6-30-90

SEAL

### COUNTY SURVEYOR'S CERTIFICATE

THIS CORNER RECORD WAS RECEIVED 12/15 19 91 AND EXAMINED AND FILED 6/8 19 92

BY: Gail R. McDaniel  
TITLE: DEPUTY COUNTY SURVEYOR

DOCUMENT No. \_\_\_\_\_  
STATEMENT ON BACK OF SHEET

YES  NO

Book 2, Corner Records, Page 188

*JN: 88108*