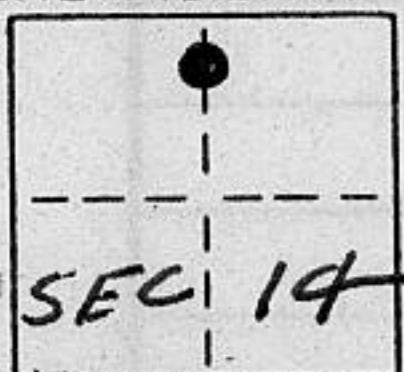


**CORNER RECORD**

COUNTY OF PLACER T. 16N. R. 17E. M.D. MERIDIAN CALIFORNIA

CORNER TYPE: GOV'T. CORNER  MEANDER  RANCHO  CONTROL  OTHER

CORNER IDENTIFICATION - DATE OF VISIT 8-18 1988



LOT 8, TAHOE ESTATES UNIT 1  
BK. D OF MAPS PG. 89

CORNER - LEFT AS FOUND  FOUND AND TAGGED  REESTABLISHED OBLITERATED CORNER  REBUILT

PHYSICAL DESCRIPTION OF CORNER FOUND: EVIDENCE AND METHOD USED TO IDENTIFY OR REESTABLISH

- = FOUND 3/4" IRON PIPE W/PLASTIC PLUG STAMPED L.S. 3719
- = FOUND ORIGINAL 2x2" CEDAR HUB SCRIBED W/LOT NO.'S
- = FOUND ORIGINAL 2x2" CEDAR HUB RESET 3/4" IRON PIPE W/PLASTIC PLUG STAMPED L.S. 5549

PHYSICAL DESCRIPTION OF MONUMENTS REBUILT OR PERPETUATED

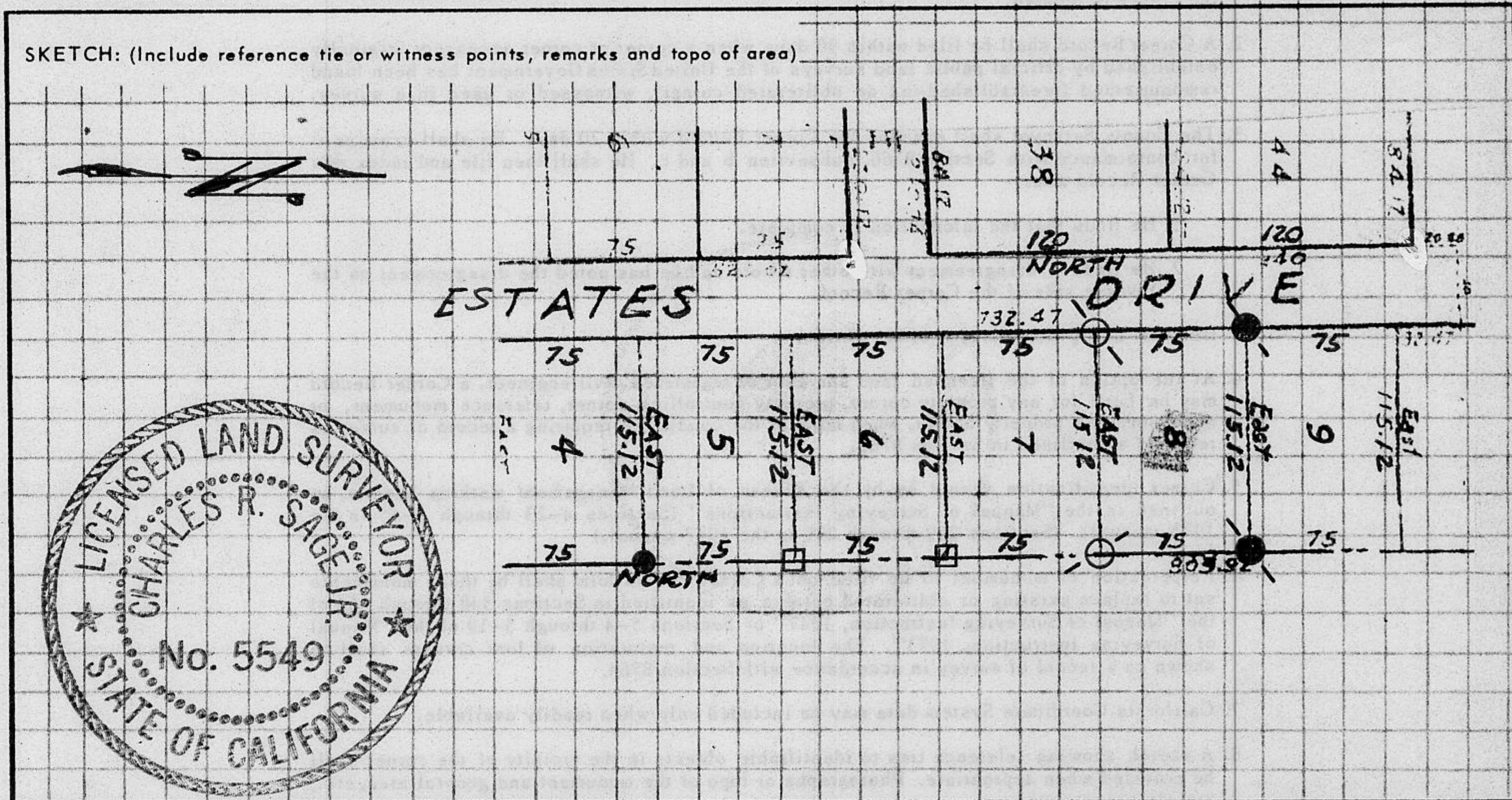
- = SET 3/4" IRON PIPE W/PLASTIC PLUG STAMPED L.S. 5549

CALIFORNIA COORDINATE SYSTEM ORDER: FIRST  SECOND  THIRD

STATIONS USED: NGS (USC & GS)  STATE  COUNTY  OTHER  STATION \_\_\_\_\_ STATION \_\_\_\_\_

ZONE \_\_\_\_\_ ELEVATION \_\_\_\_\_ NORTHINGS (Y) \_\_\_\_\_ EASTINGS (X) \_\_\_\_\_

SKETCH: (Include reference tie or witness points, remarks and topo of area)



**SURVEYOR'S CERTIFICATE**

THIS CORNER RECORD WAS PREPARED BY ME OR UNDER MY DIRECTION IN CONFORMANCE WITH THE LAND SURVEYORS ACT ON AUGUST 30 1988

SIGNED: Charles R. Sage Jr.

L.S. or R.C.E. No.: L.S. 5549 EXP. 6-30-90

SEAL

**COUNTY SURVEYOR'S CERTIFICATE**

THIS CORNER RECORD WAS RECEIVED 12/15 1991 AND EXAMINED AND FILED 6/8 1992

BY: Bruce L. McDaniel  
TITLE: DEPUTY COUNTY SURVEYOR

DOCUMENT No. \_\_\_\_\_  
STATEMENT ON BACK OF SHEET

YES  NO

Book 2, Corner Records, Page 191

8895