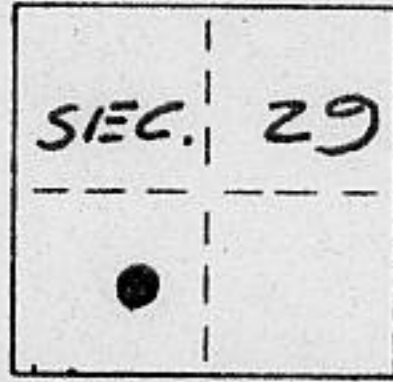


**CORNER RECORD**

COUNTY OF PLACER T. 16N R. 16E M.D. MERIDIAN CALIFORNIA

CORNER TYPE: GOV'T. CORNER  MEANDER  RANCHO  CONTROL  OTHER

CORNER IDENTIFICATION - DATE OF VISIT 7-24 19 89



LOTS 1 & 2 BLOCK 'F'  
SQUAW VALLEY ESTATES SUB. NO 1  
BOOK 'E' OF MAPS PAGE 47

CORNER - LEFT AS FOUND  FOUND AND TAGGED  REESTABLISHED OBLITERATED CORNER  REBUILT

PHYSICAL DESCRIPTION OF CORNER FOUND: EVIDENCE AND METHOD USED TO IDENTIFY OR REESTABLISH

- = FOUND 5/8" BOLT W/ HEX NUT
- = FOUND 1" OPEN IRON PIPE
- ⊗ = FOUND 3/4" IRON PIPE W/ PLASTIC PLUG UNLEGIBLE

PHYSICAL DESCRIPTION OF MONUMENTS REBUILT OR PERPETUATED

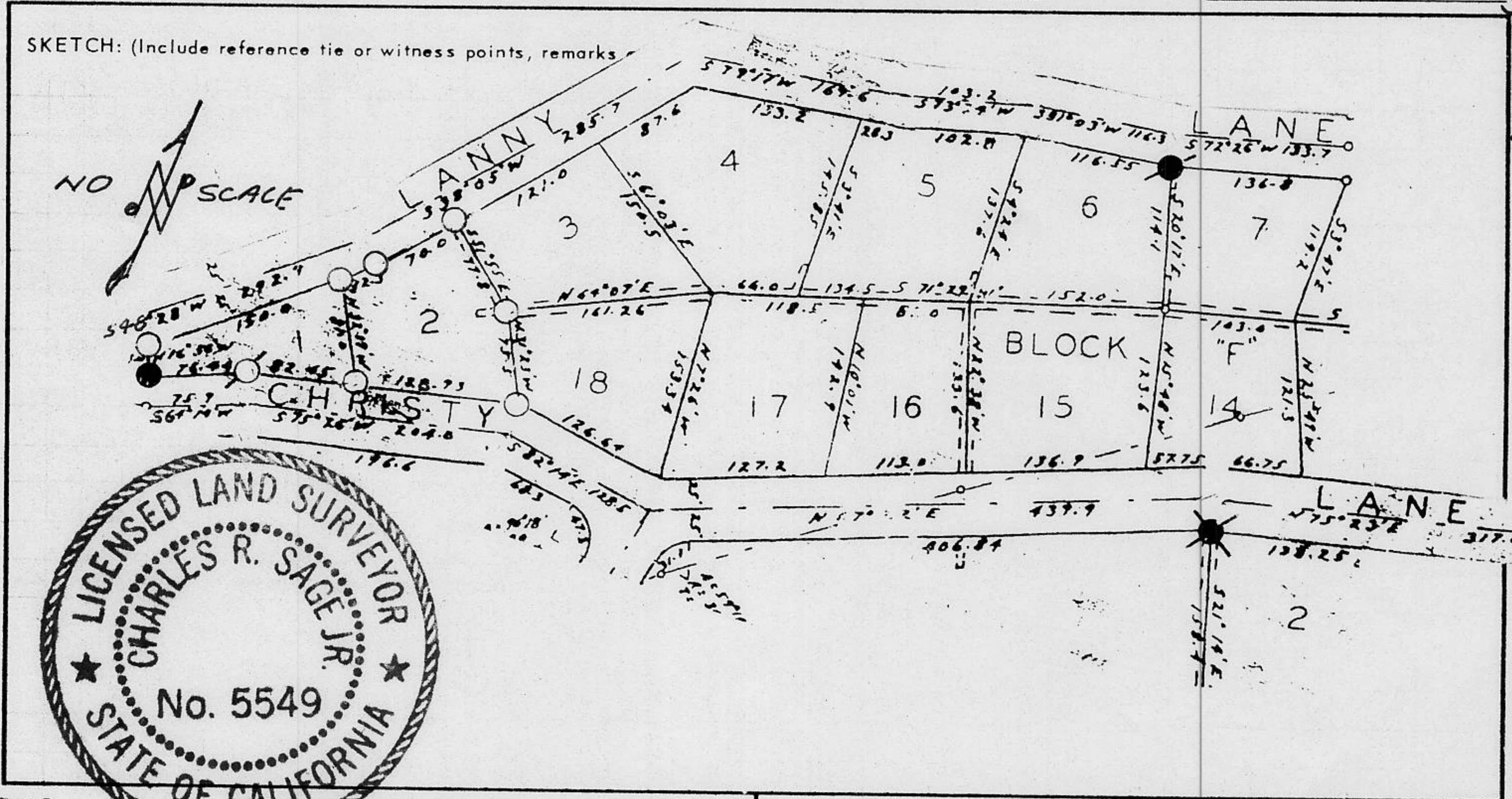
- = SET 3/4" IRON PIPE W/ PLASTIC PLUG STAMPED L.S. 5549
- ⊗ = SET SPIKE & WASHER STAMPED L.S. 5549

CALIFORNIA COORDINATE SYSTEM ORDER: FIRST  SECOND  THIRD

STATIONS USED: NGS (USC & GS)  STATE  COUNTY  OTHER  STATION \_\_\_\_\_ STATION \_\_\_\_\_

ZONE \_\_\_\_\_ ELEVATION \_\_\_\_\_ NORTHINGS (Y) \_\_\_\_\_ EASTINGS (X) \_\_\_\_\_

SKETCH: (Include reference tie or witness points, remarks)



08108

**SURVEYOR'S CERTIFICATE**

THIS CORNER RECORD WAS PREPARED BY ME OR UNDER MY DIRECTION IN CONFORMANCE WITH THE LAND SURVEYORS ACT ON 7-25 19 89

SIGNED: Charles R. Sage Jr.

L.S. or R.C.E. No.: L.S. 5549 EXP 6-30-93

SEAL

**COUNTY SURVEYOR'S CERTIFICATE**

THIS CORNER RECORD WAS RECEIVED 12/15 19 91 AND EXAMINED AND FILED 6/8 19 92

BY: Lawrence L. McDaniel  
 TITLE: DEPUTY COUNTY SURVEYOR

DOCUMENT No. \_\_\_\_\_ STATEMENT ON BACK OF SHEET

YES  NO

Book 3, Corner Records, Page 47