

CORNER RECORD

COUNTY OF PLACER T. 10N. R. 16E. M.D.D. & MERIDIAN CALIFORNIA

CORNER TYPE: GOVT. CORNER MEANDER RANCHO CONTROL OTHER

CORNER IDENTIFICATION — DATE OF VISIT 8-15 1989



LOT 13 BLOCK "G" SQUAW VALLEY ESTATES NO. 1
BOOK "E" OF MAPS PAGE 47

CORNER — LEFT AS FOUND FOUND AND TAGGED REESTABLISHED OBLITERATED CORNER REBUILT

PHYSICAL DESCRIPTION OF CORNER FOUND; EVIDENCE AND METHOD USED TO IDENTIFY OR REESTABLISH

- FOUND $\frac{1}{2}$ " BEBAR
- FOUND $\frac{3}{16}$ " BEBAR
- FOUND "BRIDGE" SPIKE
- FOUND $\frac{3}{4}$ " IRON PIPE

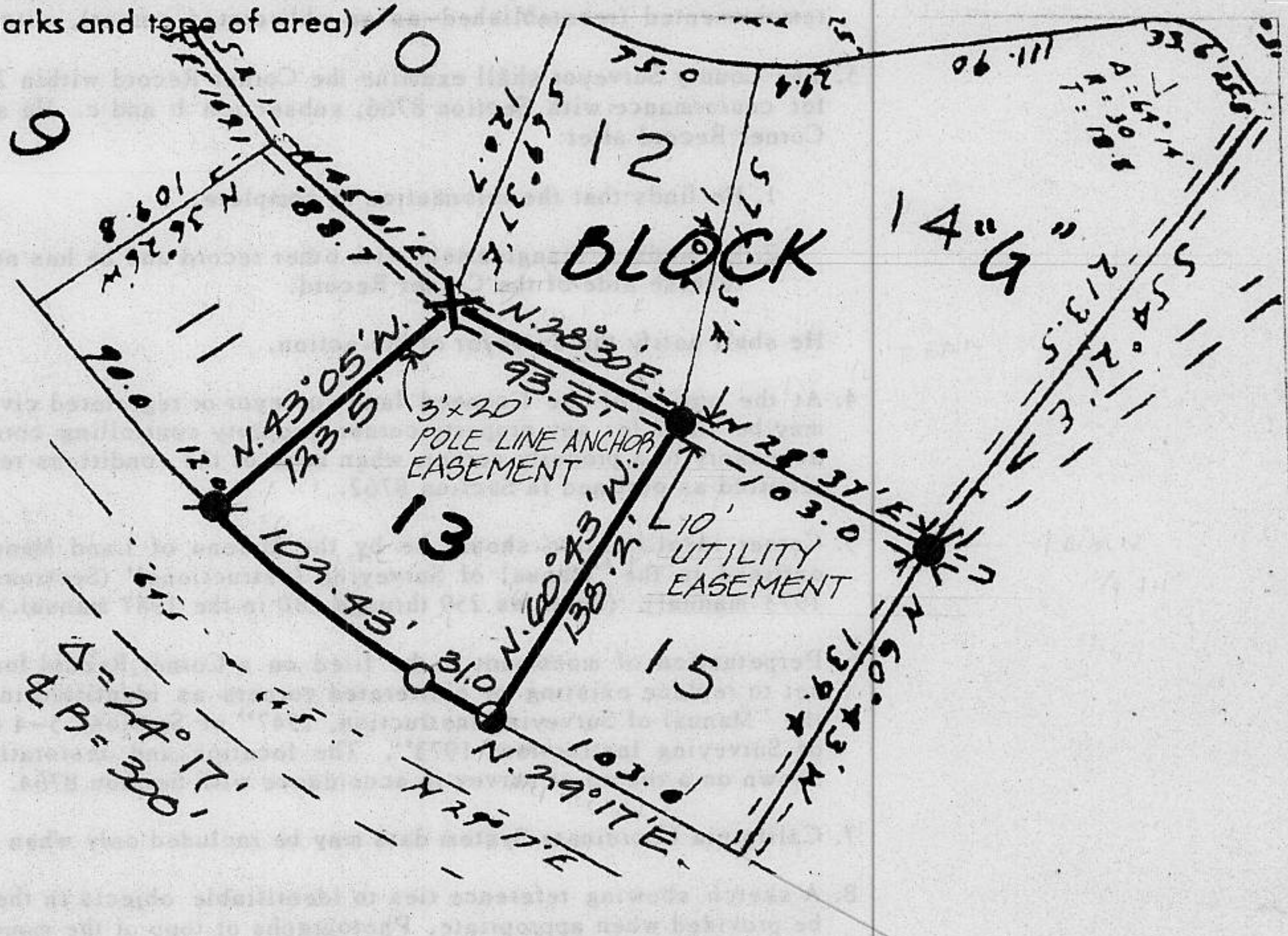
PHYSICAL DESCRIPTION OF MONUMENTS REBUILT OR PERPETUATED

- SET $\frac{3}{4}$ " IRON PIPE W/ PLASTIC PLUG STAMPED L.S. 5549.
- ✗ SET CHISELED "X" IN ROCK.

CALIFORNIA COORDINATE SYSTEM ORDER: FIRST SECOND THIRD
 STATIONS USED: NGS (USC & GS) STATE COUNTY OTHER STATION _____ STATION _____
 ZONE _____ ELEVATION _____ NORTHINGS (Y) _____ EASTINGS (X) _____

SKETCH: (Include reference tie or witness points, remarks and type of area)

NO SCALE



JN: 89120
SURVEYOR'S CERTIFICATE
 THIS CORNER RECORD WAS PREPARED BY ME OR UNDER MY DIRECTION IN CONFORMANCE WITH THE LAND SURVEYORS ACT ON AUGUST 16 1989
 SIGNED: Charles R. Sage Jr.
 L.S. or R.C.E. No.: L.S. 5549 EXP. 6-30-93

COUNTY SURVEYOR'S CERTIFICATE
 THE CORNER RECORD WAS RECEIVED 12/15 1991
 AND EXAMINED AND FILED 6/8 1992
 BY: Dani S. McDaniel
 TITLE: DEPUTY COUNTY SURVEYOR
 DOCUMENT No. _____

STATEMENT ON BACK OF SHEET
 YES NO

BOOK 3, CORNER RECORDS, PAGE 13