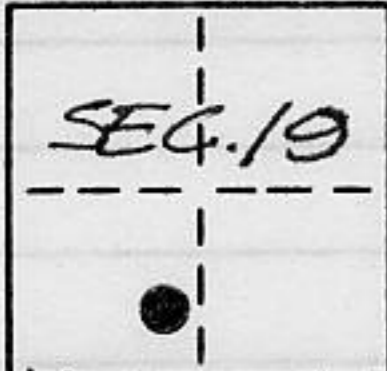


# CORNER RECORD

COUNTY OF PLACER T. 10 N. R. 18 E. M.P. \_\_\_\_\_ MERIDIAN CALIFORNIA

CORNER TYPE: GOV'T. CORNER  MEANDER  RANCHO  CONTROL  OTHER

CORNER IDENTIFICATION - DATE OF VISIT 10-17 1989



LOTS 39 & 40 BLOCK "M" BROCKWAY VISTA SUB.  
BOOK "D" OF MAPS PAGE 10

CORNER - LEFT AS FOUND  FOUND AND TAGGED  REESTABLISHED OBLITERATED CORNER  REBUILT

PHYSICAL DESCRIPTION OF CORNER FOUND: EVIDENCE AND METHOD USED TO IDENTIFY OR REESTABLISH

- FOUND 3/4" IRON PIPE W/ PLASTIC PLUG STAMPED L.S. 5549
- FOUND 1/2" REBAR

PHYSICAL DESCRIPTION OF MONUMENTS REBUILT OR PERPETUATED

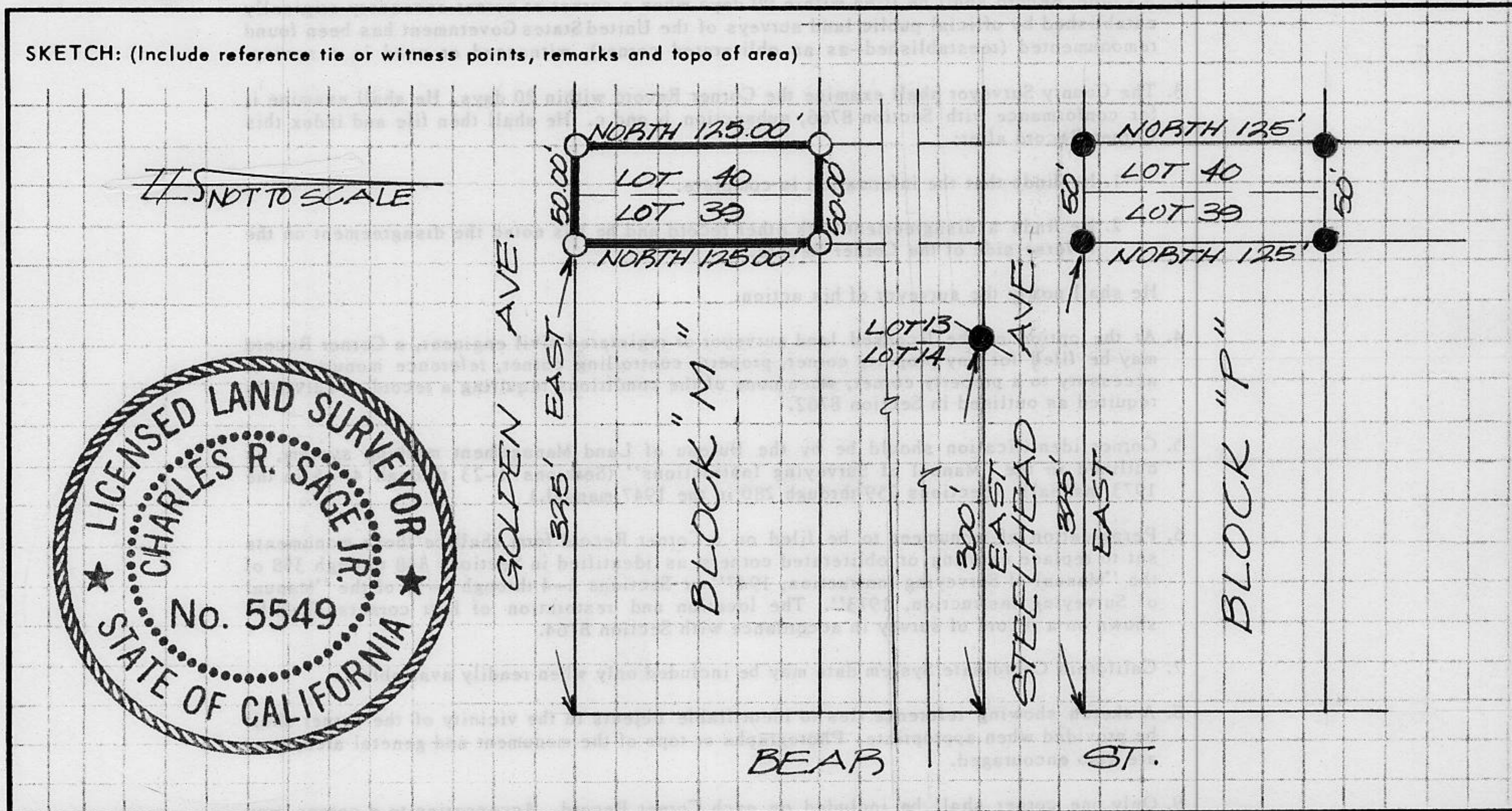
- SET 3/4" IRON PIPE W/ PLASTIC PLUG STAMPED L.S. 5549

CALIFORNIA COORDINATE SYSTEM ORDER: FIRST  SECOND  THIRD

STATIONS USED: NGS (USC & GS)  STATE  COUNTY  OTHER  STATION \_\_\_\_\_ STATION \_\_\_\_\_

ZONE \_\_\_\_\_ ELEVATION \_\_\_\_\_ NORTHINGS (Y) \_\_\_\_\_ EASTINGS (X) \_\_\_\_\_

SKETCH: (Include reference tie or witness points, remarks and topo of area)



JN 89170 SURVEYOR'S CERTIFICATE  
THIS CORNER RECORD WAS PREPARED BY ME OR UNDER MY DIRECTION IN CONFORMANCE WITH THE LAND SURVEYORS ACT ON 10-18 1989  
SIGNED: Charles R. Sage, Jr.  
L.S. or R.C.E. No.: L.S. 5549 EXP 6-30-93  
SEAL

COUNTY SURVEYOR'S CERTIFICATE  
THIS CORNER RECORD WAS RECEIVED 12/15 1991 AND EXAMINED AND FILED 6/8 1992  
BY: Bruce J. McDaniel  
TITLE: DEPUTY COUNTY SURVEYOR  
DOCUMENT No. \_\_\_\_\_  
STATEMENT ON BACK OF SHEET YES  NO

Book 3, Corner Records, Page 20