

**CORNER RECORD**

COUNTY OF PLACER T. 16N R. 17E MD MERIDIAN CALIFORNIA

CORNER TYPE: GOV'T. CORNER  MEANDER  RANCHO  CONTROL  OTHER

CORNER IDENTIFICATION - DATE OF VISIT 06-19 1988



**LOT 20 TAHOE MARINA ESTATES**  
**BOOK H PAGE 59**

CORNER - LEFT AS FOUND  FOUND AND TAGGED  REESTABLISHED OBLITERATED CORNER  REBUILT

PHYSICAL DESCRIPTION OF CORNER FOUND: EVIDENCE AND METHOD USED TO IDENTIFY OR REESTABLISH

● FOUND 3/4" REBAR PER H/59

PHYSICAL DESCRIPTION OF MONUMENTS REBUILT OR PERPETUATED

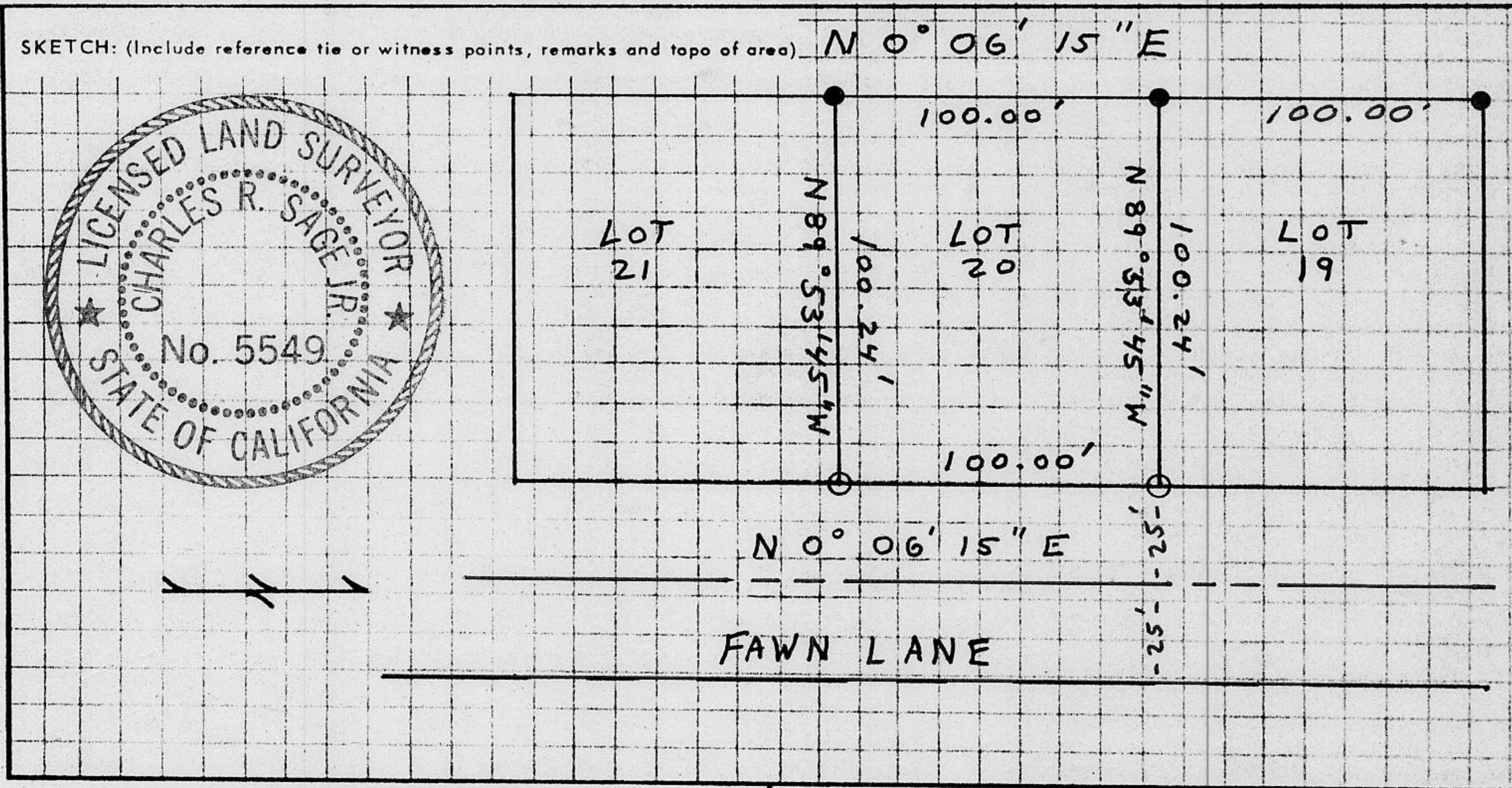
○ SET 3/4" IRON PIPE W/PLASTIC PLUG STAMPED LS 5549

CALIFORNIA COORDINATE SYSTEM ORDER: FIRST  SECOND  THIRD

STATIONS USED: NGS (USC & GS)  STATE  COUNTY  OTHER  STATION \_\_\_\_\_ STATION \_\_\_\_\_

ZONE \_\_\_\_\_ ELEVATION \_\_\_\_\_ NORTHINGS (Y) \_\_\_\_\_ EASTINGS (X) \_\_\_\_\_

SKETCH: (Include reference tie or witness points, remarks and topo of area)



**SURVEYOR'S CERTIFICATE**

THIS CORNER RECORD WAS PREPARED BY ME OR UNDER MY DIRECTION IN CONFORMANCE WITH THE LAND SURVEYORS ACT ON 6-30 1988

SIGNED: Charles R. Sage, Jr.

L.S. or R.C.E. No.: L.S. 5549 EXP 6-30-89

SEAL

**COUNTY SURVEYOR'S CERTIFICATE**

THIS CORNER RECORD WAS RECEIVED 12/15 1991 AND EXAMINED AND FILED 6/8 1992

BY: Dan J. McDaniel  
TITLE: DEPUTY COUNTY SURVEYOR

DOCUMENT No. \_\_\_\_\_

STATEMENT ON BACK OF SHEET

YES  NO

Book 3, Corner Records, PAGE 33

JN: 8862