

CORNER RECORD

COUNTY OF PLACER T. 16 N R. 18 E N1D MERIDIAN CALIFORNIA

CORNER TYPE: GOV'T. CORNER MEANDER RANCHO CONTROL OTHER
 CORNER IDENTIFICATION - DATE OF VISIT 9-1 19 88



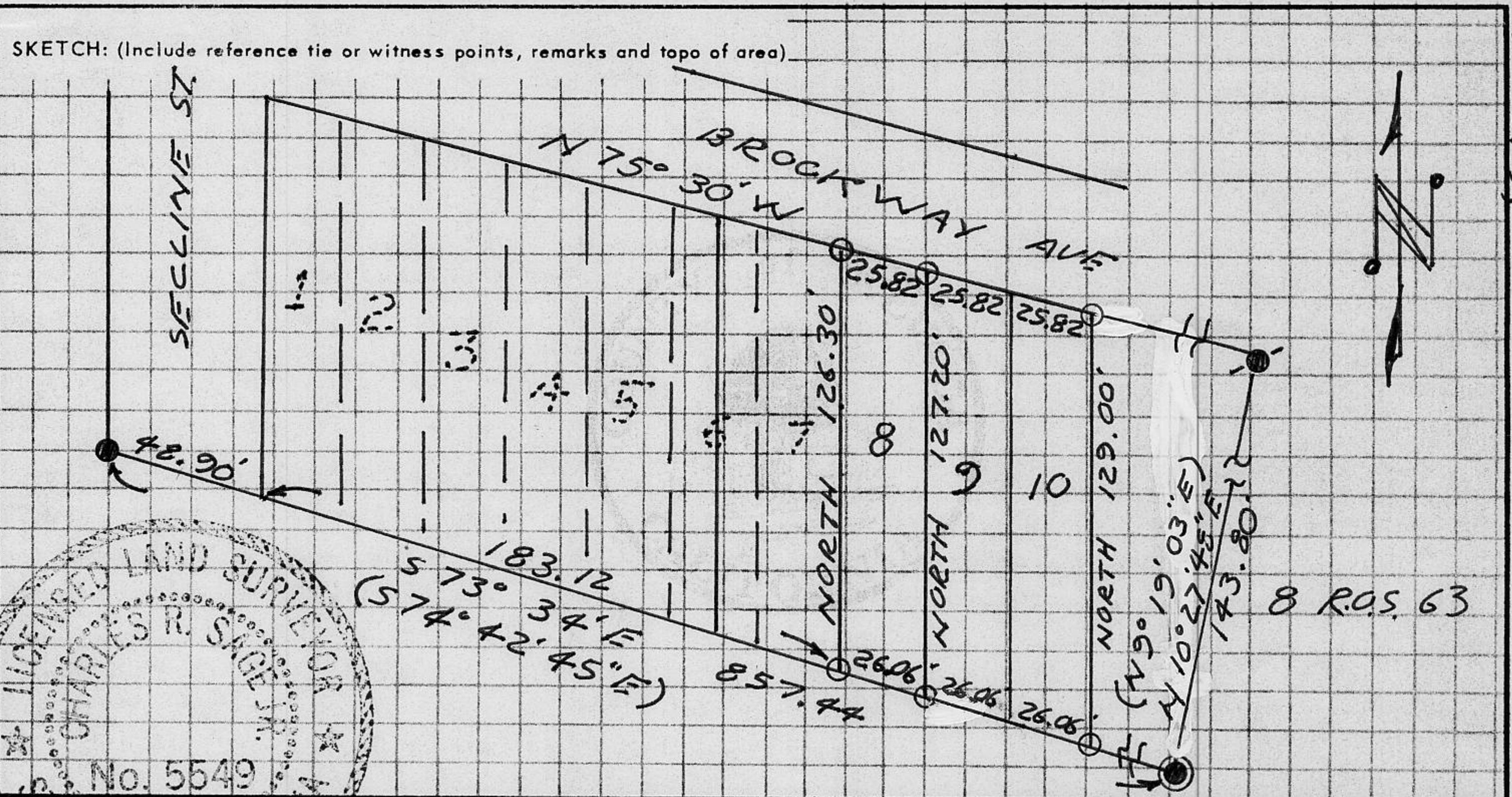
LOT 8 BROCKWAY VISTA SUB.
BK. 'D' OF MAPS PG. 16 BLOCK A

CORNER - LEFT AS FOUND FOUND AND TAGGED REESTABLISHED OBLITERATED CORNER REBUILT

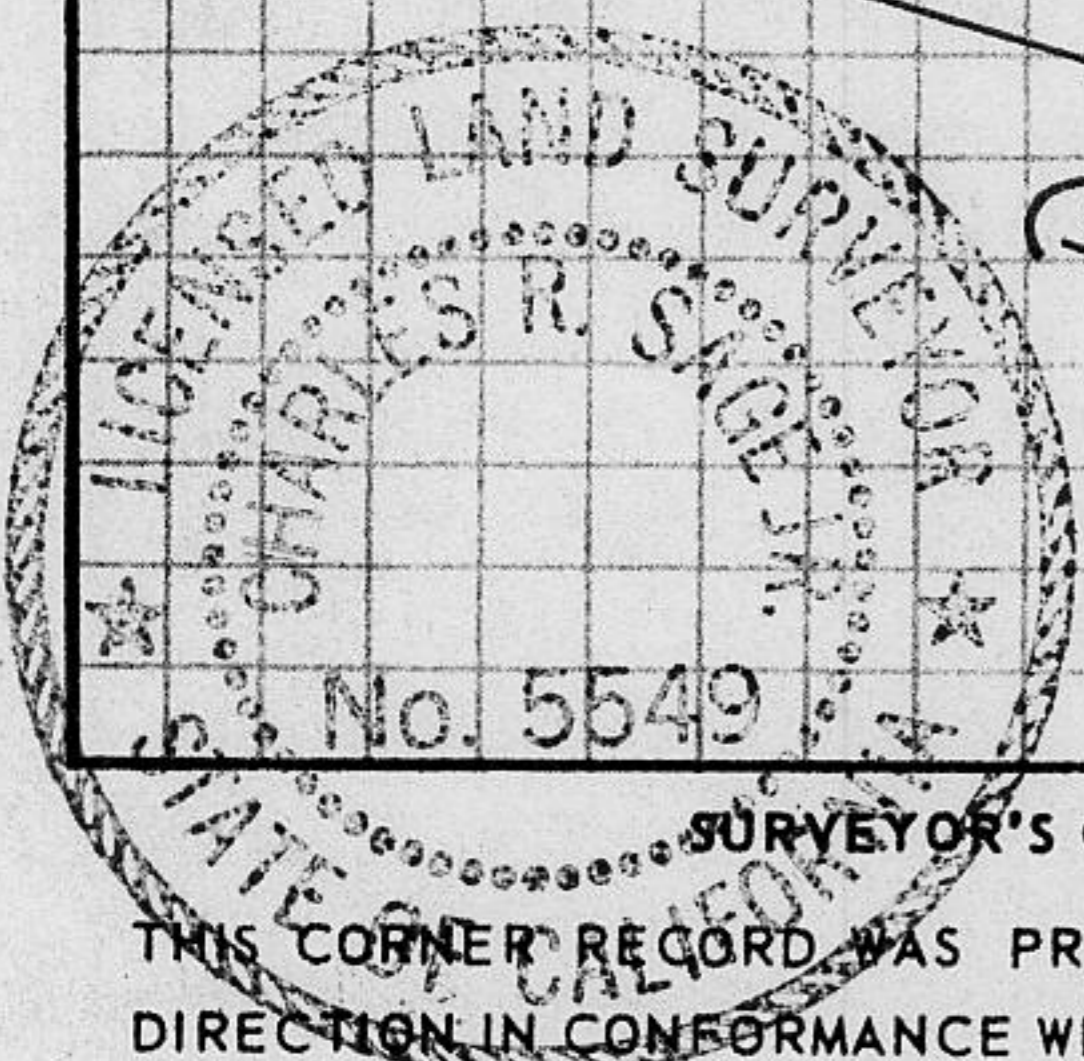
PHYSICAL DESCRIPTION OF CORNER FOUND: EVIDENCE AND METHOD USED TO IDENTIFY OR REESTABLISH
 ● = FOUND 3/4" IRON PIPE W/PLASTIC PLUG STAMPED R.C.E. 20257
 ● = FOUND 3/4" IRON PIPE W/WOOD PLUG AND TAG STAMPED L.S. 28
 ● = FOUND 3/4" I.P. IN CONG. WITH BRONZE DISK STAMPED L.S. 2839, 1980

PHYSICAL DESCRIPTION OF MONUMENTS REBUILT OR PERPETUATED
 ○ = SET 3/4" IRON PIPE W/PLASTIC PLUG STAMPED L.S. 5549

CALIFORNIA COORDINATE SYSTEM ORDER: FIRST SECOND THIRD
 STATIONS USED: NGS (USC & GS) STATE COUNTY OTHER STATION _____ STATION _____
 ZONE _____ ELEVATION _____ NORTHINGS (Y) _____ EASTINGS (X) _____



Book 3, Corner Records, Page 36



SURVEYOR'S CERTIFICATE
 THIS CORNER RECORD WAS PREPARED BY ME OR UNDER MY DIRECTION IN CONFORMANCE WITH THE LAND SURVEYORS ACT ON 9-12 19 88
 SIGNED: Charles R. Sage Jr.
 L.S. or R.C.E. No.: L.S. 5549 EXP. 6-30-90
 SEAL

COUNTY SURVEYOR'S CERTIFICATE
 THIS CORNER RECORD WAS RECEIVED 12/15 19 91
 AND EXAMINED AND FILED 6/8 19 92
 BY: Paul J. McDaniel
 TITLE: DEPUTY COUNTY SURVEYOR
 DOCUMENT No. _____
 STATEMENT ON BACK OF SHEET YES NO

JN: 88100 JN: 88124