

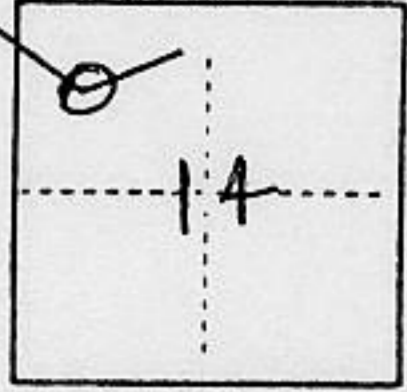
(For County Use Only)

CORNER RECORD

COUNTY OF PLACER T. 15N R. 11E MDM MERIDIAN CALIFORNIA

CORNER TYPE: GOV'T. CORNER MEANDER RANCHO CONTROL OTHER

CORNER IDENTIFICATION — DATE OF VISIT 10/12/92 1992



COR 2 of MS 1397 Mountain Gate P.M.

CORNER — LEFT AS FOUND FOUND AND TAGGED REESTABLISHED OBLITERATED CORNER REBUILT

PHYSICAL DESCRIPTION OF CORNER FOUND; EVIDENCE AND METHOD USED TO IDENTIFY OR REESTABLISH

COR 2
M.G.P.M.
L.S. 3062
1974

FOUND $\frac{3}{4}$ " Brass Capped Pipe per ROS 5/102

PHYSICAL DESCRIPTION OF MONUMENTS REBUILT OR PERPETUATED

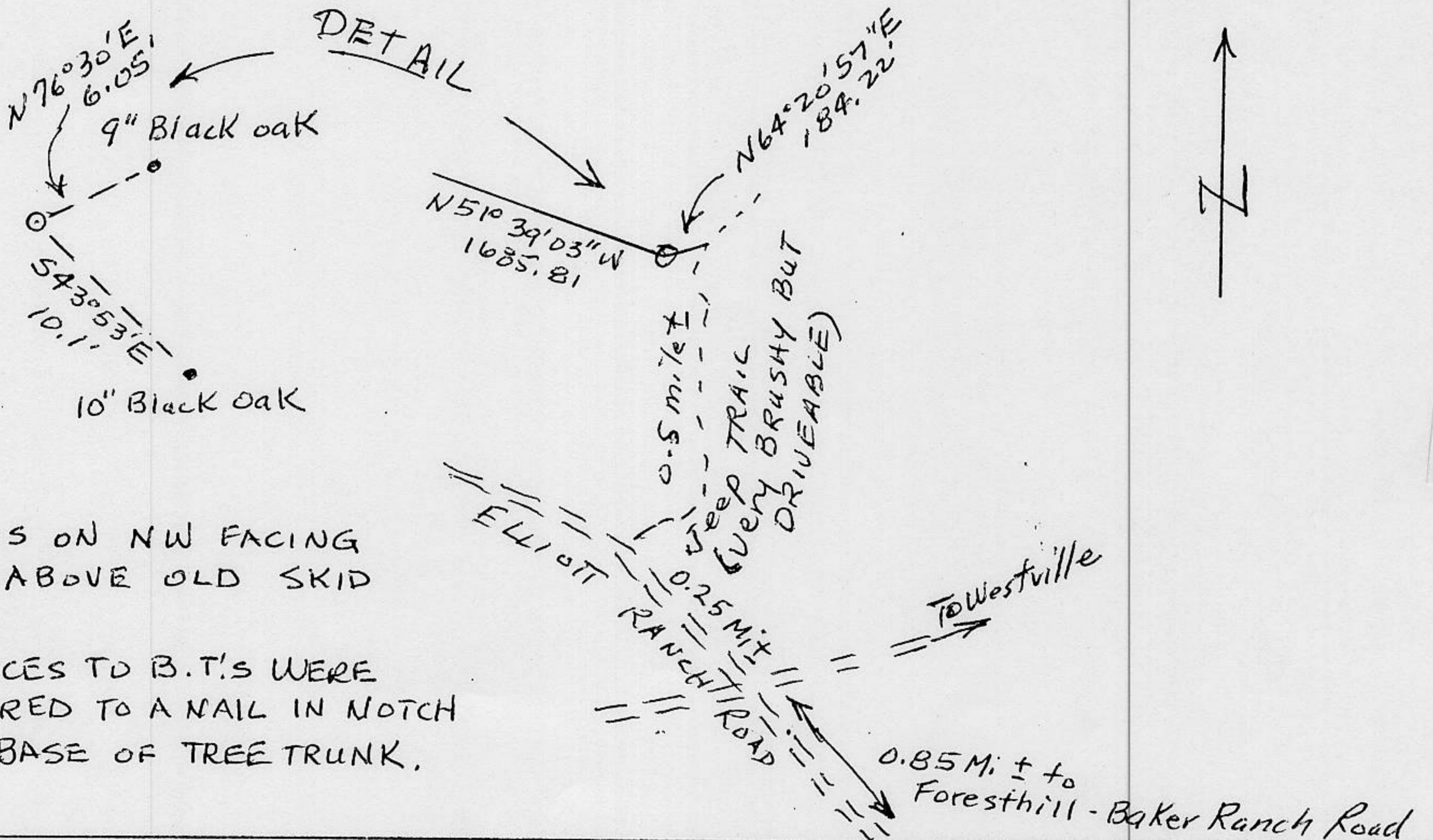
MARKED B.T.'S AS FOLLOWS:
A 10" Black oak bears $S43^{\circ}53'E - 10.1$ Ft. MS 1397 BT"
A 9" Black oak bears $N76^{\circ}30'E - 6.05$ Ft. MS 1397 BT"

CALIFORNIA COORDINATE SYSTEM ORDER: FIRST SECOND THIRD
STATIONS USED: NGS (USC & GS) STATE COUNTY OTHER STATION _____ STATION _____
ZONE _____ ELEVATION _____ NORTHINGS (Y) _____ EASTINGS (X) _____

(Fold)

SEE CONTROL DIAGRAM ON FILE WITH USFS, NEVADA CITY,
DAMASCUS CADASTRAL SURVEY - CONTRACT NO. 53-9A63-2-IT56

SKETCH: (Include reference tie or witness points, remarks and topo of area)



NOTE:

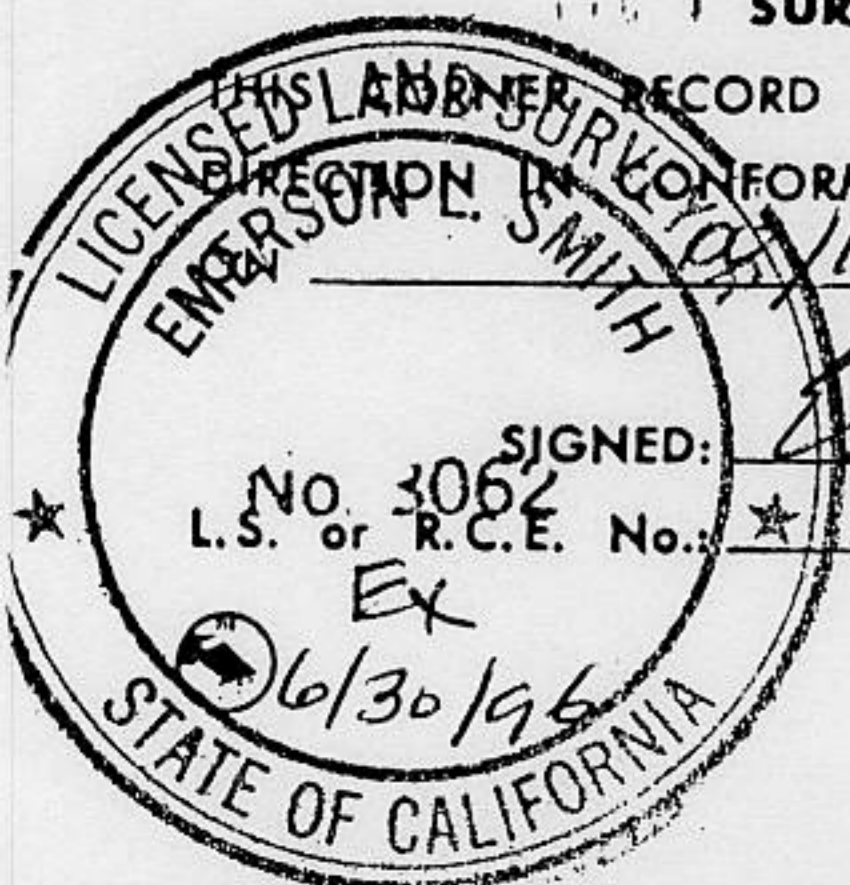
CORNER IS ON NW FACING SLOPE ABOVE OLD SKID TRAIL.
DISTANCES TO B.T.'S WERE MEASURED TO A NAIL IN NOTCH NEAR BASE OF TREE TRUNK.

SURVEYOR'S CERTIFICATE

THIS CORNER RECORD WAS PREPARED BY ME OR UNDER MY SUPERVISION IN CONFORMANCE WITH THE LAND SURVEYORS ACT OF 1907.

SIGNED: Emerson L. Smith

L.S. or R.C.E. No. LS 3062



SEAL

COUNTY SURVEYOR'S CERTIFICATE

THE CORNER RECORD WAS RECEIVED _____ 19____ AND EXAMINED AND FILED 12/16 1992

BY: Barbara M. Daniel

TITLE: DEPUTY COUNTY SURVEYOR

DOCUMENT No. _____

STATEMENT ON BACK OF SHEET

YES NO

Book 3, Corner Records, Page 94