

**CORNER RECORD**

COUNTY OF PLACER T. 16 N. R. 17 E. M.D. MERIDIAN CALIFORNIA

CORNER TYPE: GOV'T. CORNER  MEANDER  RANCHO  CONTROL  OTHER   
 CORNER IDENTIFICATION - DATE OF VISIT 9-20 1989



LOT 347 DOLLAR PT. UNIT #6  
BOOK "I" OF MAPS PAGE 15

CORNER - LEFT AS FOUND  FOUND AND TAGGED  REESTABLISHED OBLITERATED CORNER  REBUILT

PHYSICAL DESCRIPTION OF CORNER FOUND: EVIDENCE AND METHOD USED TO IDENTIFY OR REESTABLISH

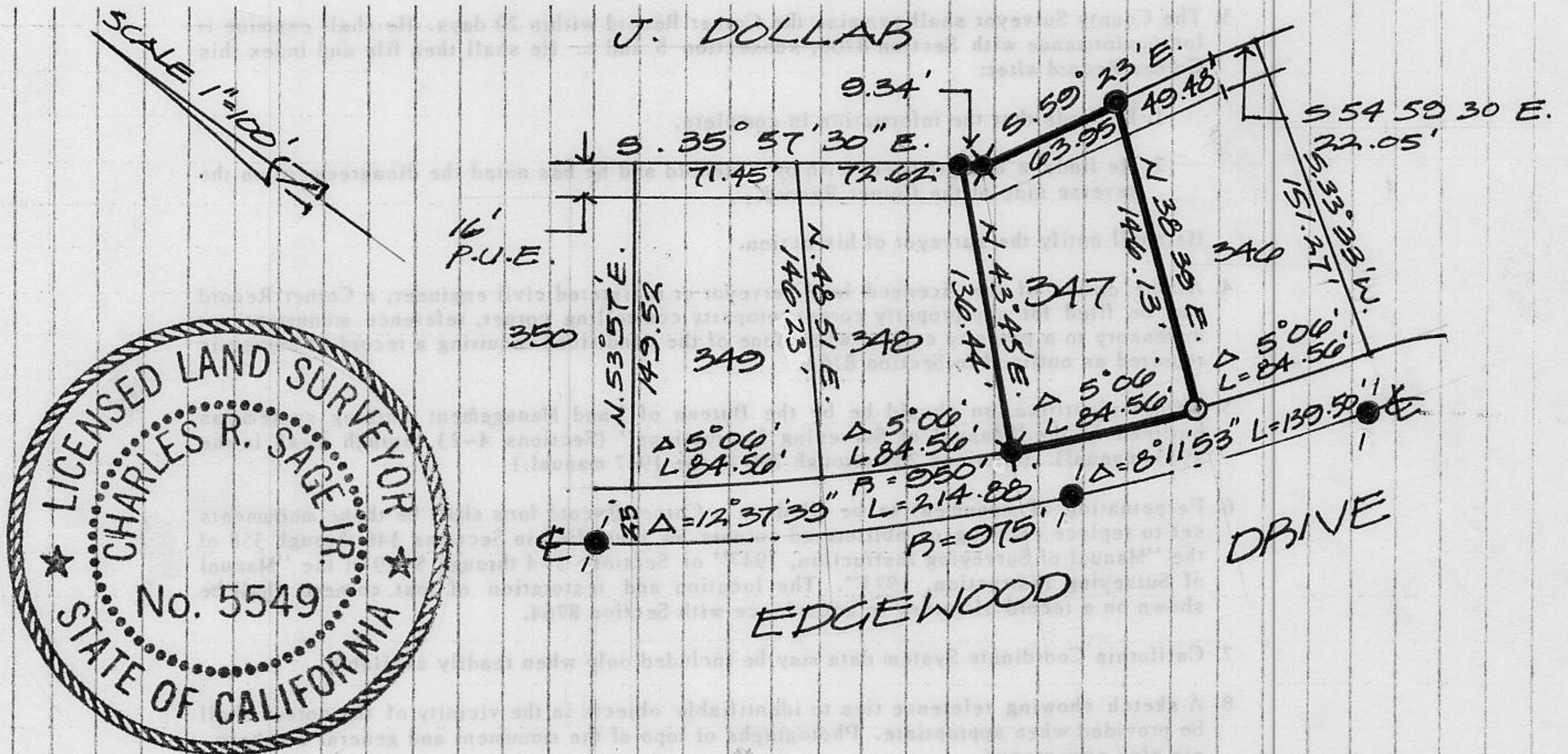
- FOUND 1/2" IRON PIN
- FOUND 5/8" REDABS W/ PLASTIC CAP B.C.E 32239
- FOUND 3/4 IRON PIN
- FOUND BOLT & WASHER

PHYSICAL DESCRIPTION OF MONUMENTS REBUILT OR PERPETUATED

- SET 3/4" IRON PIPE W/ PLASTIC PLUG STAMPED L.S. 5549

CALIFORNIA COORDINATE SYSTEM ORDER: FIRST  SECOND  THIRD   
 STATIONS USED: NGS (USC & GS)  STATE  COUNTY  OTHER  STATION \_\_\_\_\_ STATION \_\_\_\_\_  
 ZONE \_\_\_\_\_ ELEVATION \_\_\_\_\_ NORTHINGS (Y) \_\_\_\_\_ EASTINGS (X) \_\_\_\_\_

SKETCH: (Include reference tie or witness points, remarks and topo of area)



JN. 89163 **SURVEYOR'S CERTIFICATE**  
 THIS CORNER RECORD WAS PREPARED BY ME OR UNDER MY DIRECTION IN CONFORMANCE WITH THE LAND SURVEYORS ACT ON 9-25 1989  
 SIGNED: Charles R. Sage, Jr.  
 L.S. or R.C.E. No.: L.S. 5549 EXP. 6-30-93  
 SEAL

**COUNTY SURVEYOR'S CERTIFICATE**  
 THIS CORNER RECORD WAS RECEIVED 12/15 1991  
 AND EXAMINED AND FILED 6/8 1992  
 BY: Bruce J. McDaniel  
 TITLE: DEPUTY COUNTY SURVEYOR  
 DOCUMENT No. \_\_\_\_\_  
 STATEMENT ON BACK OF SHEET YES  NO

BOOK 3, CORNER RECORDS, PAGE 34