

CORNER RECORD

COUNTY OF PLACER T. 17 N R. 14 E MD MERIDIAN CALIFORNIA

CORNER TYPE: GOV'T. CORNER MEANDER RANCHO CONTROL OTHER

CORNER IDENTIFICATION - DATE OF VISIT 5-7 19 92



LOT 32 BLOCK G ICE LAKES SUBD. UNIT #2
BOOK "G" OF MAPS PAGE 1.

CORNER - LEFT AS FOUND FOUND AND TAGGED REESTABLISHED OBLITERATED CORNER REBUILT

PHYSICAL DESCRIPTION OF CORNER FOUND: EVIDENCE AND METHOD USED TO IDENTIFY OR REESTABLISH

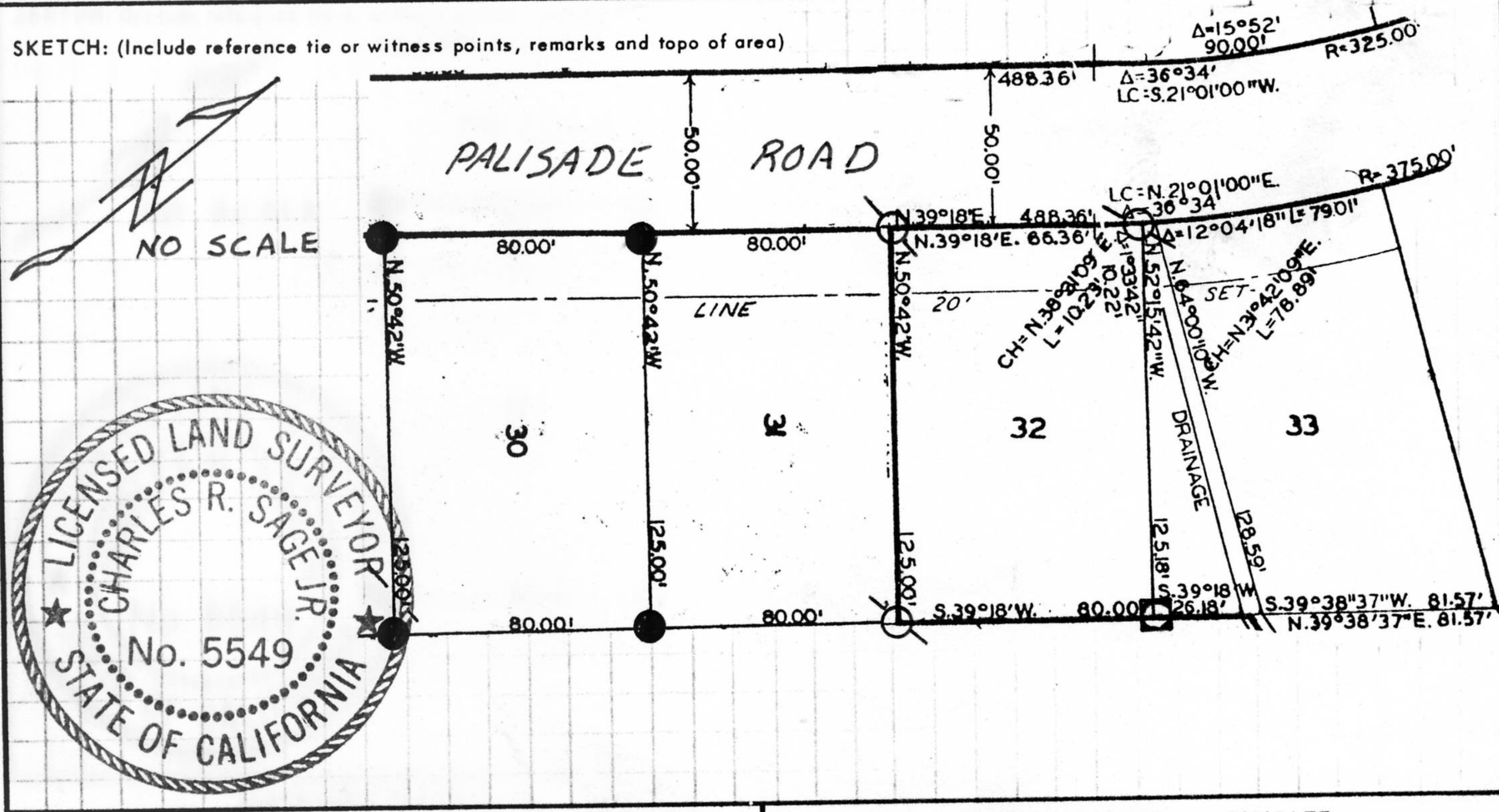
- FOUND 3/4" IRON PIPE w/PLUG STAMPED L.S. 5549
- FOUND 2"x2" WOOD HUB, NO TAG: SET 3/4" IRON PIPE w/PLASTIC PLUG STAMPED L.S. 5549 IN HUB HOLE.

PHYSICAL DESCRIPTION OF MONUMENTS REBUILT OR PERPETUATED

SET 3/4" IRON PIPE w/PLASTIC PLUG STAMPED L.S. 5549.

NOTE: ALL INFORMATION SHOWN IS RECORD PER BOOK G OF MAPS PAGE 1, NO MATERIAL DISCREPANCIES w/RECORD WERE FOUND

CALIFORNIA COORDINATE SYSTEM ORDER: FIRST SECOND THIRD
STATIONS USED: NGS (USC & GS) STATE COUNTY OTHER STATION _____ STATION _____
ZONE _____ ELEVATION _____ NORTHINGS (Y) _____ EASTINGS (X) _____



SURVEYOR'S CERTIFICATE JN: 9262

THIS CORNER RECORD WAS PREPARED BY ME OR UNDER MY DIRECTION IN CONFORMANCE WITH THE LAND SURVEYORS ACT ON 5/8 19 92

SIGNED: Charles R. Sage, Jr.

L.S. or R.C.E. No.: L.S. 5549 EXP. 6-30-93
SEAL

COUNTY SURVEYOR'S CERTIFICATE

THIS CORNER RECORD WAS RECEIVED 6/15 19 92
AND EXAMINED AND FILED 7/22 19 92

BY: Brian L. McDaniel
TITLE: DEPUTY COUNTY SURVEYOR

DOCUMENT No. _____
STATEMENT ON BACK OF SHEET YES NO

BOOK 3 CORNER RECORDS, PAGE 70