

(For County Use Only)

CORNER RECORD

COUNTY OF PLACER T. 14N. R. 9E. M.D. _____ MERIDIAN CALIFORNIA

CORNER TYPE: GOV'T. CORNER MEANDER RANCHO CONTROL OTHER PROPERTY CORNER
CORNER IDENTIFICATION — DATE OF VISIT NOVEMBER 26, 1991



PCL. "B" OF 19 P.M. 102

CORNER — LEFT AS FOUND FOUND AND TAGGED REESTABLISHED OBLITERATED CORNER REBUILT

PHYSICAL DESCRIPTION OF CORNER FOUND; EVIDENCE AND METHOD USED TO IDENTIFY OR REESTABLISH

① INDICATES FOUND 7/8" REBAR W/ PLASTIC CAP "RCE 9093" PER 19 P.M. 102

PHYSICAL DESCRIPTION OF MONUMENTS REBUILT OR PERPETUATED

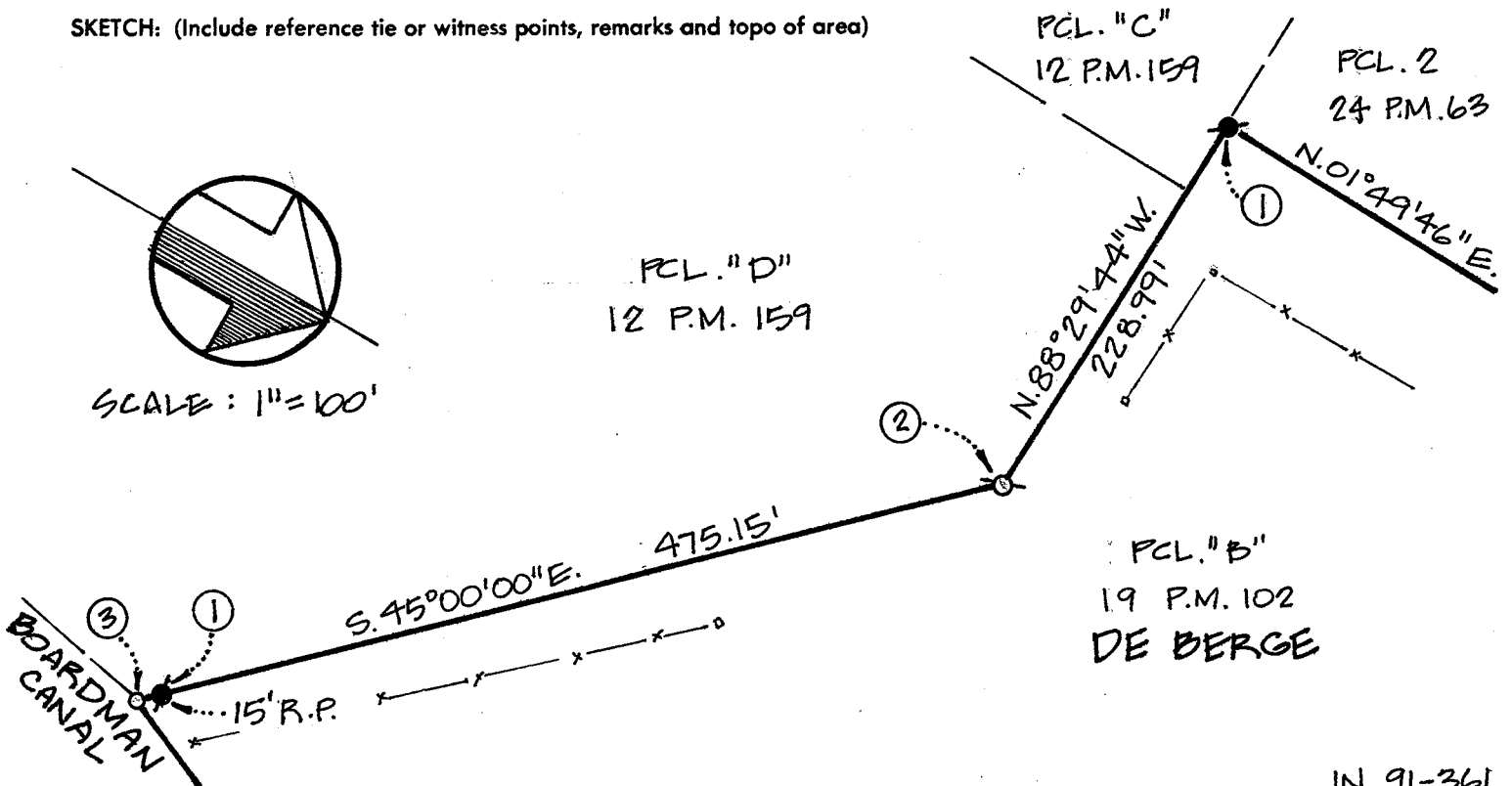
② INDICATES SET 3/4" IRON PIPE W/ PLASTIC CAP "SHUART L.S. 4645" BASED UPON RELATIVE POSITIONS OF RECORD MONUMENTS SHOWN AS FOUND IN SKETCH BELOW. PREVIOUS CORNER DESTROYED BY IRRIGATION TRENCHING.

③ INDICATES DIMENSION POINT ONLY

CALIFORNIA COORDINATE SYSTEM ORDER: FIRST SECOND THIRD
STATIONS USED: NGS (USC & GS) STATE COUNTY OTHER STATION _____ STATION _____
ZONE _____ ELEVATION _____ NORTHINGS (Y) _____ EASTINGS (X) _____

(Fold)

SKETCH: (Include reference tie or witness points, remarks and topo of area)

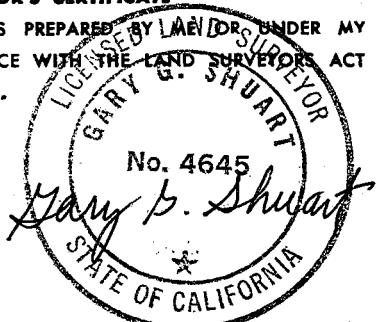


BOOK 3, CORNER RECORDS, PAGE 83

J.N. 91-361

SURVEYOR'S CERTIFICATE

THIS CORNER RECORD WAS PREPARED BY LAEVDR UNDER MY DIRECTION IN CONFORMANCE WITH THE LAND SURVEYORS ACT ON NOV. 26, 1991.



L.S. 4645
RENEWEL 09/30/94

COUNTY SURVEYOR'S CERTIFICATE

THE CORNER RECORD WAS RECEIVED 6/2 1992
AND EXAMINED AND FILED 9/8 1992

BY: Ben L. McDaniel
TITLE: DEPUTY COUNTY SURVEYOR

DOCUMENT No. _____

STATEMENT ON BACK OF SHEET

YES NO