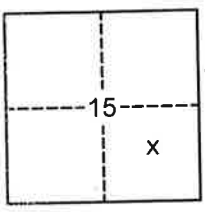


CORNER RECORD

Agency Index BK 73, PG 64
 Document Number 20200063

City of _____ County of PLACER, California
 Brief Legal Description LOTS 182, 193, & 194, AGATE BAY UPLANDS-SOUTH SUBDIVISION, H/MAPS/47 O.R.P.C.

BOOK 23 CORNER RECORDS PAGE 64



SEC. 15
 T. 16 N.
 R. 17 E.
 M.D.B. & M.

CORNER TYPE

Government Corner Control
 Meander Property
 Rancho Other
 Date of Survey 10/23/2020

COORDINATES (Optional)

N. _____ E. _____
 Elevation _____
 Units Metric U.S. Survey Foot
 Horizontal Datum _____
 Zone _____ Epoch Date _____
 Vertical Datum _____
 Complies with Public Resources Code §§8801-8819
 Complies with Public Resources Code §§8890-8902

PLS Act Ref: 8765(d) 8771 8773 Other:
 Corner/Monument: Left as found Established Rebuilt Pre-Construction
 Found and tagged Reestablished Referenced Post-Construction

Narrative of corner identified and monument as found, set, reset, replaced, or removed:
 See sheet #2 for description(s):

USED RECORD DIMENSIONS AND FOUND MONUMENTS PER H/MAPS/47, G/MAPS/42 AND E/MAPS/94 O.R.P.C. AND MONUMENTS OF NO RECORD ACCEPTED AS BEING IN RECORD POSITION, TO REESTABLISH THE MISSING CORNERS OF LOTS 182, 193, & 194 AS SHOWN ON THE ACCOMPANYING PLAT.

SURVEYOR'S STATEMENT

This Corner Record was prepared by me or under my direction in conformance with the Professional Land Surveyors' Act on April 09, 2021
 Signed [Signature] P.L.S. or R.C.E. No. 7429



COUNTY SURVEYOR'S STATEMENT

This Corner Record was received MAY 4, 2021
 and examined and filed MAY 25, 2021
 Signed [Signature] PLS 8373
 Title Deputy Co. Surveyor
 County Surveyor's Statement

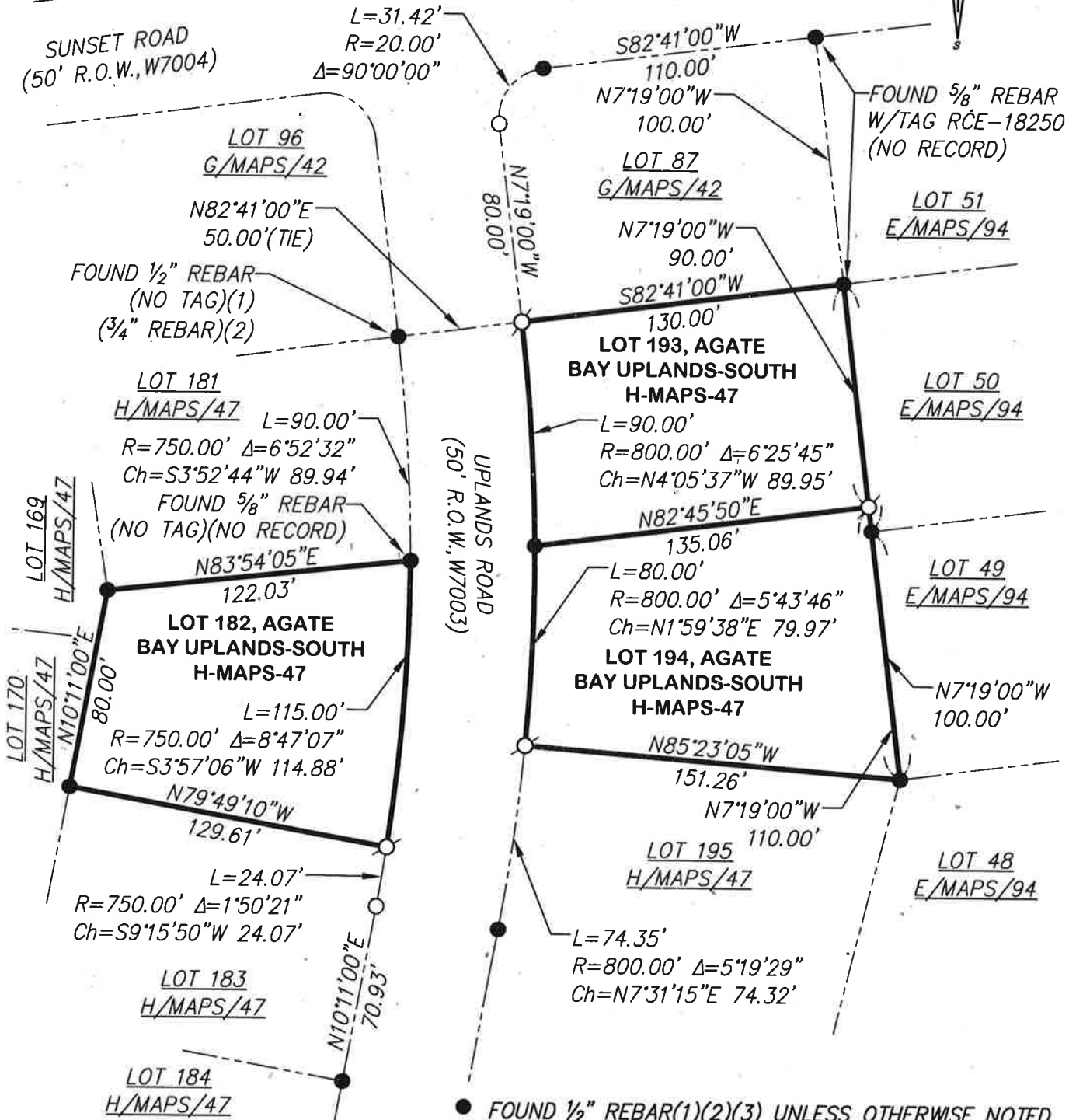
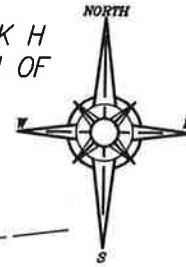


PLAT OF SURVEY

LOTS 182, 193, & 194 AGATE BAY UPLANDS-SOUTH SUBDIVISION, AS FILED IN BOOK H OF MAPS AT PAGE 47, OFFICIAL RECORDS PLACER COUNTY, CALIFORNIA. A PORTION OF SECTION 15, TOWNSHIP 16 N., RANGE 17 E., M.D.B. & M.

SCALE 1" = 60'

DATE OF SURVEY 10/23/2020



NOTE: ALL BEARINGS AND DISTANCES SHOWN HEREON ARE RECORD PER H/MAPS/47, G/MAPS/42 & E/MAPS/94 O.R.P.C.

- FOUND 1/2" REBAR(1)(2)(3) UNLESS OTHERWISE NOTED
- DIMENSION POINT (NOTHING FOUND OR SET)
- ⊙ SET 5/8" REBAR WITH YELLOW PLASTIC CAP L.S. 7429
- (1) PER H/MAPS/47
- (2) PER G/MAPS/42
- (3) PER E/MAPS/94

J/N 3284.00

BOOK 33 OF CORNER RECORDS PAGE 104