

Placer County Service Systems By Department and Cost Center

Administration & Financial System

Assessor

Assessor Services

Auditor-Controller

Auditor-Controller
Workday Support Organization

County Clerk-Recorder / Registrar

Clerk-Recorder-Elections

County Counsel

County Counsel Services

County Executive Office

County Executive Office Administration
Public Information
Board of Supervisors
Clerk of the Board of Supervisors
Economic Development
Risk Management
Document Solutions
Procurement
Revenue Services
Food Services

Human Resources

Benefit Administration
Dental & Vision
Human Resources Services
Unemployment Insurance
Workers Compensation
Organizational Effectiveness and Employee Support
Administration and Labor Relations

Information Technology

Countywide Systems and Radio
Information Technology

Treasurer-Tax Collector

Treasurer / Tax Collector
mPOWER

Community & Cultural System

Agricultural Commissioner

Farm Advisor

Facilities Management

Placer County Museums

Library

County Library

Public Works

Parks and Grounds Maintenance

Health & Human Support System

Child Support Services

Child Support Services

Health & Human Services

HHS Administration
Adult Systems of Care
Children Systems of Care
Human Services
Client Aid
Housing - HHS
Public Health
Environmental Health
Animal Services
Veterans Services

Land Use System

Agricultural Commissioner / Sealer

Agricultural Commissioner / Sealer
Fish & Game Commission

Community Development Resource Agency

Administration & Fiscal
Building Services
Engineering & Surveying
Planning Services
Low & Moderate Income Housing Asset Fund
Community Development Housing
Community Development Grants & Loans
PCCP Administration

Facilities Management

Administration
Building Maintenance
Capital Projects
Real Estate Services

Public Works

Administration
Eastern Regional Landfill
Engineering and Transportation
Environmental Utilities
Stormwater and Floodplain Management
Road Maintenance
National Pollution Discharge Elimination System
Special Aviation
Fleet Operations
Placer County Transit
Solid Waste Management
Tahoe Area Regional Transit

Capital Facility Projects

Facilities Management

Capital Improvements

Public Works

Parks & Grounds Capital Improvements
Environmental Utilities - Capital Improvements

Public Protection System

County Executive Office

Emergency Services
County Fire

District Attorney

District Attorney Services

Probation

Probation Services

Sheriff-Coroner-Marshall

Grants Program
Tahoe Operations
Protection & Prevention
Sheriff Administration
Support Services
Auburn Jail
South Placer Jail
Automated Mobile & Fixed Fingerprinting
Placer Auto Theft Task Force

Functions By Department And Cost Center

As Defined By The State Controller's Office
Consistent With The Annual Report

GOVERNMENTAL ACTIVITIES

General Government

Assessor

Auditor-Controller

- Auditor-Controller
- Workday Support Organization

Community Development Resource Agency

- Engineering & Surveying
- PCCP Administration

County Counsel

County Executive Office

- Board of Supervisors
- Clerk of the Board of Supervisors
- County Executive Office Administration
- Economic Development
- Procurement
- Public Information Office
- Revenue Services
- Food Services
- Document Solutions
- Risk Management

County Executive Office Non-Departmental

- Appropriation for Contingencies
- Community and Agency Support
- Contribution to Facilities and Infrastructure
- Contribution to HHS
- Contribution to Library
- Lake Tahoe Tourism and Promotions
- Open Space
- Other Debt Service

Facilities Management

- Administration
- Building Maintenance
- Placer County Government Center Campus
- Real Estate Services

Human Resources

- Human Resources
- Benefit Administration
- Dental & Vision
- Unemployment Insurance
- Workers Compensation
- Organizational Effectiveness/Employee Support
- Administration and Labor Relations

Information Technology

- Information Technology
- Countywide Radio Systems

Public Works

- Administration
- Fleet Operations

Treasurer-Tax Collector

Public Protection

Agricultural Commissioner/Sealer

- Agricultural Commissioner/Sealer
- Fish and Game

Community Development Resource Agency

- Administration & Fiscal
- Building Services
- Planning Services

County Clerk-Recorder-Elections

County Executive Office

- Emergency Services
- County Fire

County Executive Office Non-Departmental

- Criminal Justice Other Programs
- Contribution to Public Safety
- Criminal Justice CEO

District Attorney

Health and Human Services

- Animal Services

Probation

Public Works

- National Pollution Discharge Elimination System

Sheriff-Coroner-Marshall

- Grants Program
- Tahoe Operations
- Protection and Prevention
- Sheriff Administration
- Support Services
- Auburn Jail
- South Placer Jail
- Automated Mobile & Fixed Fingerprint
- Placer Regional Auto Theft Task Force

Child Support Services

Public Ways & Facilities

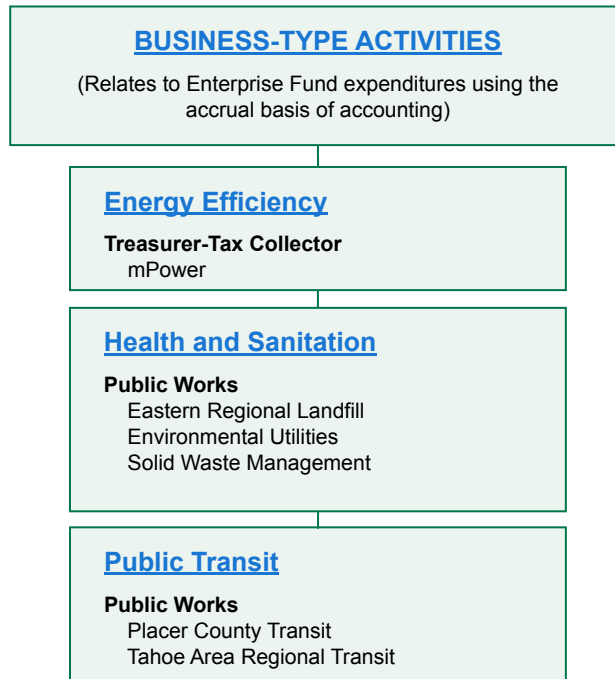
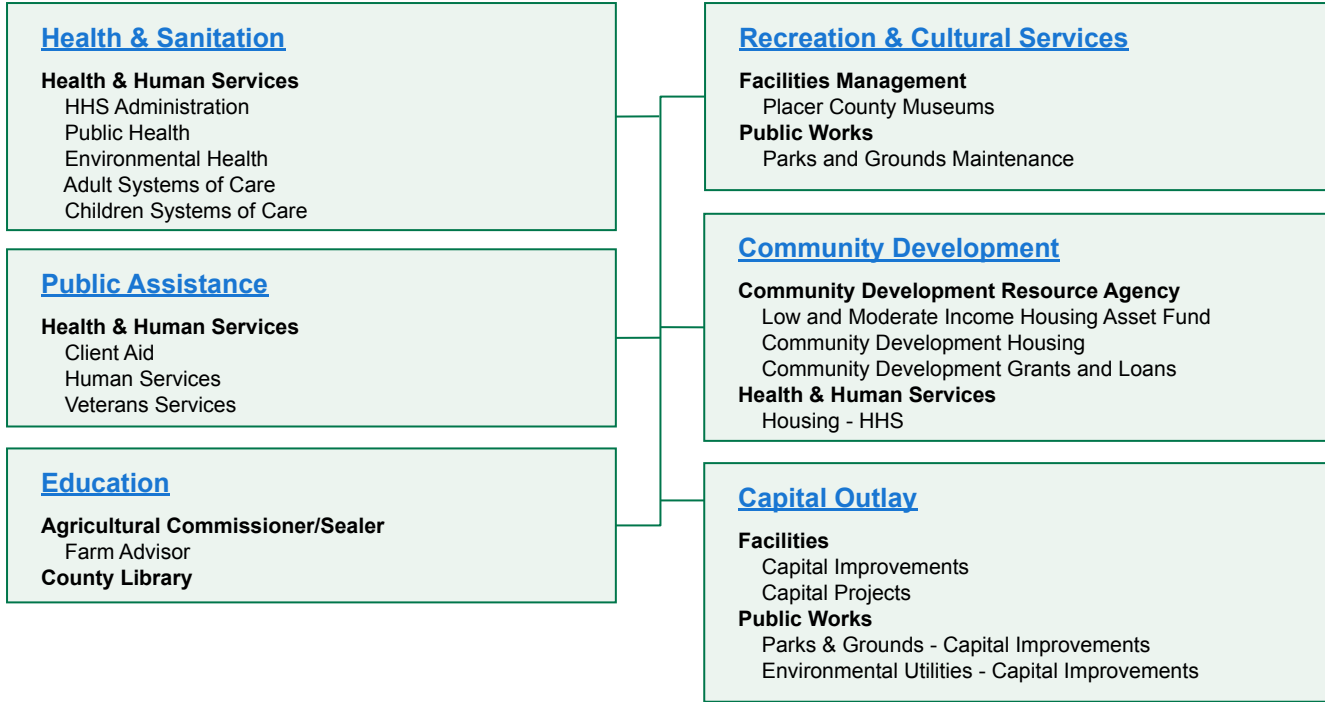
Public Works

- Special Aviation
- Engineering and Transportation
- Road Maintenance

Functions By Department And Cost Center

As Defined By The State Controller's Office
Consistent With The Annual Report

GOVERNMENTAL ACTIVITIES



Administration & Financial System

Assessor

Auditor-Controller

County Clerk-Recorder

County Counsel

County Executive Office

Human Resources

Information Technology

Treasurer-Tax Collector

Administration and Financial Services

System Goal

Placer County builds public trust in government by providing the leadership, workforce, infrastructure, technology, financial, and administrative support necessary to produce quality programs and services that make a difference in people’s lives and demonstrate good value to taxpayers.

Community Results

Placer County provides quality leadership and oversight to all programs, services, and activities.

Placer County demonstrates integrity and accountability in its collection, investment, accounting, and management of government funds, and its financial and budget practices help to maintain the County’s overall financial health.

Technology is reliable and effectively used to improve workforce efficiency, strengthen internal and external communication, and enhance service delivery to constituents.

Employees are well trained, receive competitive pay and benefits, and are highly satisfied with Placer County as their employer.

Placer County receives recognition for innovation and service excellence; customers are highly satisfied with County services.

County infrastructure is well planned and maintained, and meets the needs for effective and efficient service delivery.

Voter registration, election processes, and document archiving will be of the highest quality, integrity, and accuracy.

The County measures and achieves results and provides clear, relevant, and meaningful information to elected officials and constituents.

Community & Cultural System

**Agricultural Commissioner /
Sealer Weights & Measures
Facilities Management
Library
Public Works**

Community and Cultural Services

System Goal

Placer County ensures that County recreational, educational, and cultural services reflect the varied interests of our community; honor our rich tradition and heritage; and preserve the important historical, cultural, and environmental resources of our region.

Community Results

Placer County provides residents and visitors with ample access to recreational, educational, and cultural opportunities.

Residents are highly satisfied with County recreational, educational, and cultural programs and services.

Residents regularly attend and participate in community and cultural events.

Placer County's tradition and heritage and its important historical, cultural, and environmental resources are preserved.

Health & Human Support System

**Child Support Services
Health & Human Services**

Health & Human Support Services

System Goal

Placer County works collaboratively with community partners and federal, state, and local governments to provide integrated, easily accessible, and results-based services that protect the general health and well-being of our communities and vulnerable populations, and supports individual and family efforts to achieve and maintain independence and self-sufficiency.

Community Results

Children are financially supported and cared for, and enter school healthy and ready to learn.

Families and individuals are assisted in attaining the knowledge, skills, abilities, and support necessary to achieve and maintain independence and self-sufficiency.

Our vulnerable populations are well protected, reports of abuse and neglect receive timely response and investigation, re-abuse rates are low, and mentally ill individuals receive care and support.

Quality education programs, inspection activities, and community clinic services support the health and safety of County residents and visitors.

Individuals with substance abuse and dependency issues are provided high quality treatment opportunities.

Land Use System

Agricultural Commissioner /

Sealer Weights & Measures

Community Development Resource Agency

Facilities Management

Public Works

Land Use Services

System Goal

Placer County facilitates responsible growth and development that ensures economic health and prosperity; a safe and reliable infrastructure; and well-planned communities in which to live, work, and enjoy leisure activities; while protecting and preserving the environment, open spaces, and its rich cultural heritage.

Community Results

Land use planning, development, and services are responsive to community needs.

The natural environment, open space, and agricultural lands are preserved for the use and enjoyment of current and future Placer County residents and visitors.

The County facilitates the development of transportation and roadway systems that improve safety, reduce congestion, and support and encourage economic development.

Air and water are clean, attainment goals for clean air and water are met, and sufficient water availability is maintained.

The County attracts and expands environmentally sound industries to ensure jobs for residents and growth of a strong and diverse tax base.

Public Protection System

County Executive Office

District Attorney

Probation

Sheriff-Coroner-Marshal

Public Protection Services

System Goal

Placer County continues to ensure safe communities in which to live, work, and enjoy recreational activities by providing efficient, effective, integrated, and prevention-oriented criminal justice and emergency response systems.

Community Results

The County will continue to maintain low rates of crime, personal injury, and loss of life and property; people feel safe in their communities.

The County justice agencies work collaboratively among themselves and with the community to develop appropriate and effective crime prevention strategies and services.

The County provides adequate and appropriate response to crime including prompt investigation, arrest, prosecution, and incarceration when necessary.

The County is well trained and ready to respond to fires and natural disasters, or to domestic terrorist threats.

Criminal justice and emergency service agencies meet the highest standards of quality in their operations and inspire public trust and confidence.