

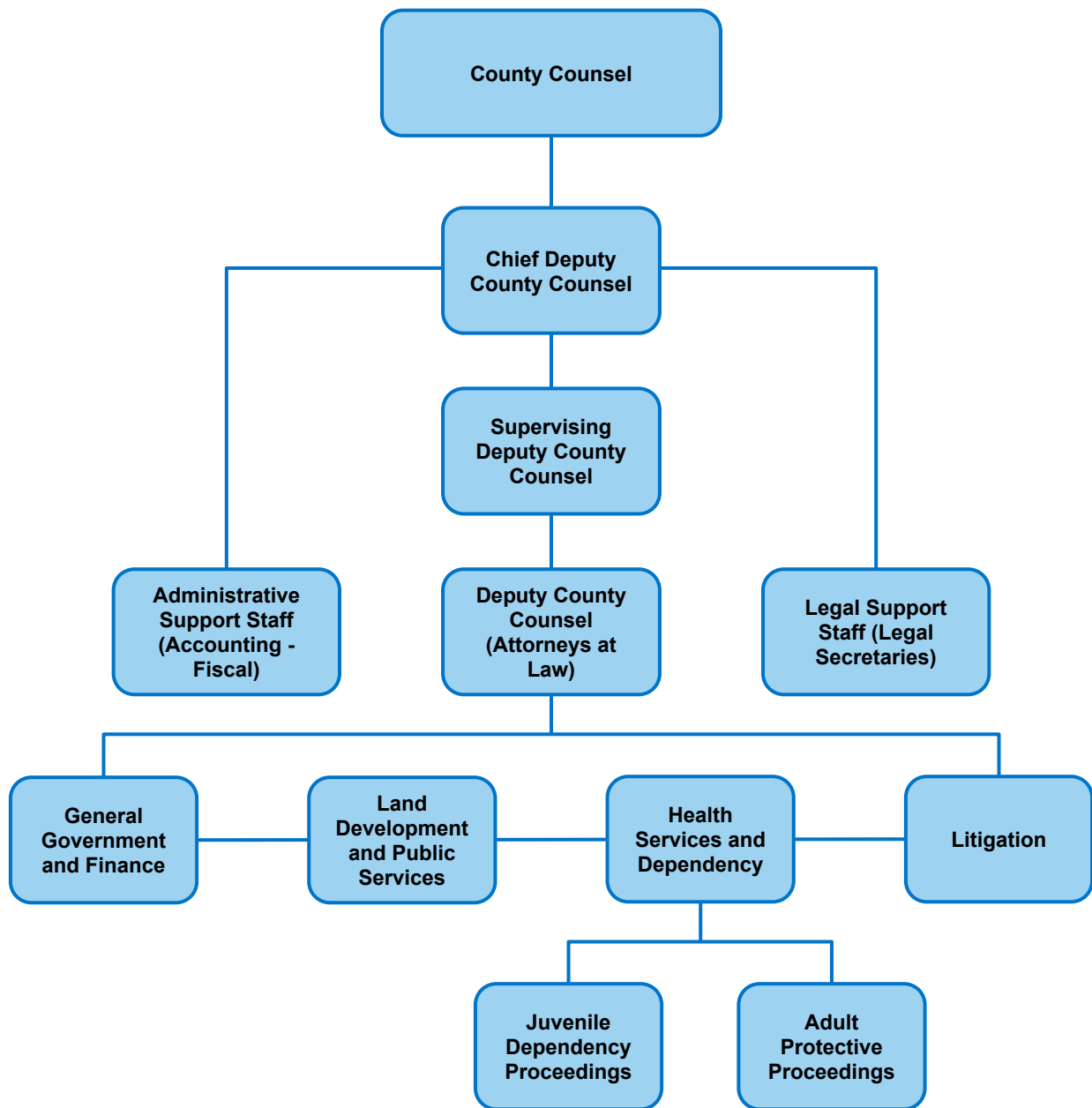
Mission Statement:

To provide the highest quality legal advice and counsel in a timely and responsive manner in order to assist the Board of Supervisors, County Officers, and department management in making decisions that promote the public interest, and to vigorously advocate on behalf of the County and its employees in a professional and ethical manner.

County Counsel
Cost Center Summary
Fiscal Year 2021-22

Cost Center	FY 2019-20 Actuals	FY 2020-21 Adopted Budget	FY 2021-22 Recommended Budget	FY 2021-22 Adopted Budget	YOY % Change
General Fund					
County Counsel	\$ 2,577,660	\$ 3,828,033	\$ 3,945,016	\$ 3,945,016	3.06%
Funded Positions					
County Counsel	26	26	26	26	
Total Funded Positions	26	26	26	26	0.00%
Total Allocated Positions	28	26	26	26	0.00%

County Counsel



County Council – Cost Center 08001

Purpose:

The County Counsel's Office provides legal advice and representation for all programs, services, and activities of the County and to select special districts. This legal support is provided primarily through the following programs, 1) General Government and Finance; 2) Land Development and Public Services; 3) Health Services and Dependency, which includes responsibility for juvenile and adult protective proceedings; and 4) Litigation and Claims.

Major Budget Adjustments and Initiatives:

- None.

Program Title	Program Description	Program Cost
General Government, Finance and Tax	Provides legal advice to the Board of Supervisors and the County Executive Office on the full range of activities, initiatives, and issues undertaken by the Board. Provides legal services to the County Auditor, the Assessor and the Treasurer- Tax Collector regarding property taxes, as well as representation of the Assessor's Office at assessment appeal hearings. Provides legal services to the Sheriff Office, including its Corrections Division, District Attorney, Probation Department, Criminal Justice and Indigent Defense Services Programs administered by the County Executive Office, and the Grand Jury. Provides legal services to Human Resources and all county departments and functions and certain special districts on matters specific to their program purposes, including implementation of Board initiatives. Provides legal advice and counseling to all county departments and functions and certain special districts on matters of general application countywide, such as the Brown Act, the Public Records Act, employment and labor relations issues, and review of or assistance in preparation of resolutions, ordinances, contracts, agenda items, and other documents required for county business.	\$ 1,368,058
Land Development and Public Services	Provides legal services to county departments and functions involved in land development and planning activities, and public works and facilities, including county owned or maintained properties, and public services such as water, sewer, and solid waste. Provides legal services to the County Planning Commission, the County Agricultural Commissioner, the Successor Agency of the former Redevelopment Agency, the Western Placer Waste Management Authority, and the Placer County Flood Control District.	\$ 1,014,638
Health Services and Dependency	Provides legal advice to the Health and Human Services Departments on legal compliance with the myriad of state and federal regulatory laws relevant to the programs undertaken by the department's divisions. Provides legal advice to the County Public Administrator (PA) and County Public Guardian (PG), and legal representation in adult protective proceedings of the PA and PG, and in mental health proceedings under the Lanterman-Petris-Short (LPS) Act and other statutory enactments. Provides legal advice and representation in juvenile dependency proceedings. Provides training of social workers on legal issues involved in juvenile dependency activities.	\$ 1,291,354
Litigation and Claims	Provides legal defense of the County in all civil legal actions filed against the County, its departments and employees. Represents the County in prosecuting construction, contract and other recovery lawsuits. Prosecutes and defends the County in all civil and administrative proceedings, including personnel proceedings before the Civil Service Commission, the Public Employment Relations Board, and related writs of mandate filed in the Superior Court. Assists and coordinates with special counsel retained by the Board of Supervisors under Government Code section 25203.	\$ 715,888
Special Districts	Program coding for attorney time providing legal advice to special districts.	\$ 142,974
Admin Overhead	Program coding for administrative general operating expenditures not directly attributed to a program or service and cost recoveries from other departments.	\$ (587,896)

County of Placer
Financing Sources and Uses by Budget Unit by Object
Governmental Funds
Fiscal Year 2021-22

Budget Unit: General Fund
Function: Reporting General Function
Cost Center: CC08001 County Counsel

Detail by Revenue Category and Expenditure Object	2019-20 Actuals	2020-21 Adopted Budget	2021-22 Recommended Budget	2021-22 Adopted Budget
1	2	3	4	5
Revenue				
Planning - At Cost Projects Fees	28,061	2,500	2,500	2,500
Legal Services	1,063,265	746,000	759,000	759,000
Other Fees and Charges	14,601	5,000	5,000	5,000
Miscellaneous	23,225	6,500	5,000	5,000
Transfer In A-87 Costs	2,080,832	1,492,707	1,240,902	1,240,902
Total Revenue	\$ 3,209,985	\$ 2,252,707	\$ 2,012,402	\$ 2,012,402
Expenditures / Appropriations				
Communication Services Expense	23,415	32,318	32,318	32,318
Employee Group Insurance	304,171	359,171	325,103	325,103
Maintenance - Janitorial	23,364	-	-	-
Insurance	13,585	18,700	54,385	54,385
Intra Fund Services	(3,021,462)	(2,557,500)	-	-
Parts	239	-	-	-
Overtime and Call Back	7,017	-	-	-
Maintenance - Building	-	-	69,636	69,636
Training / Education	-	-	30,500	30,500
Intrafund Transfers / Services In (Contra Expense)	-	-	(2,739,000)	(2,739,000)
Maintenance	7,446	12,000	12,000	12,000
Professional / Membership Dues	16,537	22,715	25,715	25,715
Misc Expense	1,242	-	-	-
Postage	4,446	5,658	5,584	5,584
Other Supplies	10,921	42,855	43,717	43,717
Printing	22,881	35,000	50,290	50,290
Professional and Special Services - General	6,026	37,500	40,500	40,500
Professional and Special Services - Information Technology	205,559	253,250	295,249	295,249
Professional and Special Services - County	8,069	18,820	8,500	8,500
Professional and Special Services - Technical, Engineering and Environmental	37,583	57,139	-	-
Professional and Special Services - Legal	194,144	278,590	278,590	278,590
Rents and Leases - Equipment	870	1,200	1,200	1,200
Retirement	999,676	1,189,186	1,346,321	1,346,321
401 (k) Employer Match	11,661	13,501	14,250	14,250
Other Postemployment Benefits (OPEB)	166,546	177,450	111,540	111,540
Payroll Tax	204,426	231,468	241,635	241,635
Salary Savings	-	(230,399)	(228,061)	(228,061)
Extra Help	-	15,000	50,000	50,000
Salaries and Wages	3,025,160	3,493,327	3,553,255	3,553,255
Cafeteria Plans (Non-PERS)	83,410	105,055	103,449	103,449
Employee Paid Sick Leave	82,577	-	-	-
PC Acquisition	11,675	18,000	18,000	18,000

continued

Detail by Revenue Category and Expenditure Object	2019-20	2020-21	2021-22	2021-22
	Actuals	Adopted Budget	Recommended Budget	Adopted Budget
1	2	3	4	5
Special Department Expense	35,894	72,500	72,500	72,500
Employee Benefits	32,280	32,260	31,768	31,768
Systems Transportation and Travel	15,607	38,700	41,700	41,700
Utilities	29,910	28,559	25,305	25,305
Workers Comp Insurance	12,787	26,010	29,067	29,067
Total Expenditures / Appropriations	\$ 2,577,660	\$ 3,828,033	\$ 3,945,016	\$ 3,945,016
Total	\$ 632,325	\$ (1,575,326)	\$ (1,932,614)	\$ (1,932,614)