

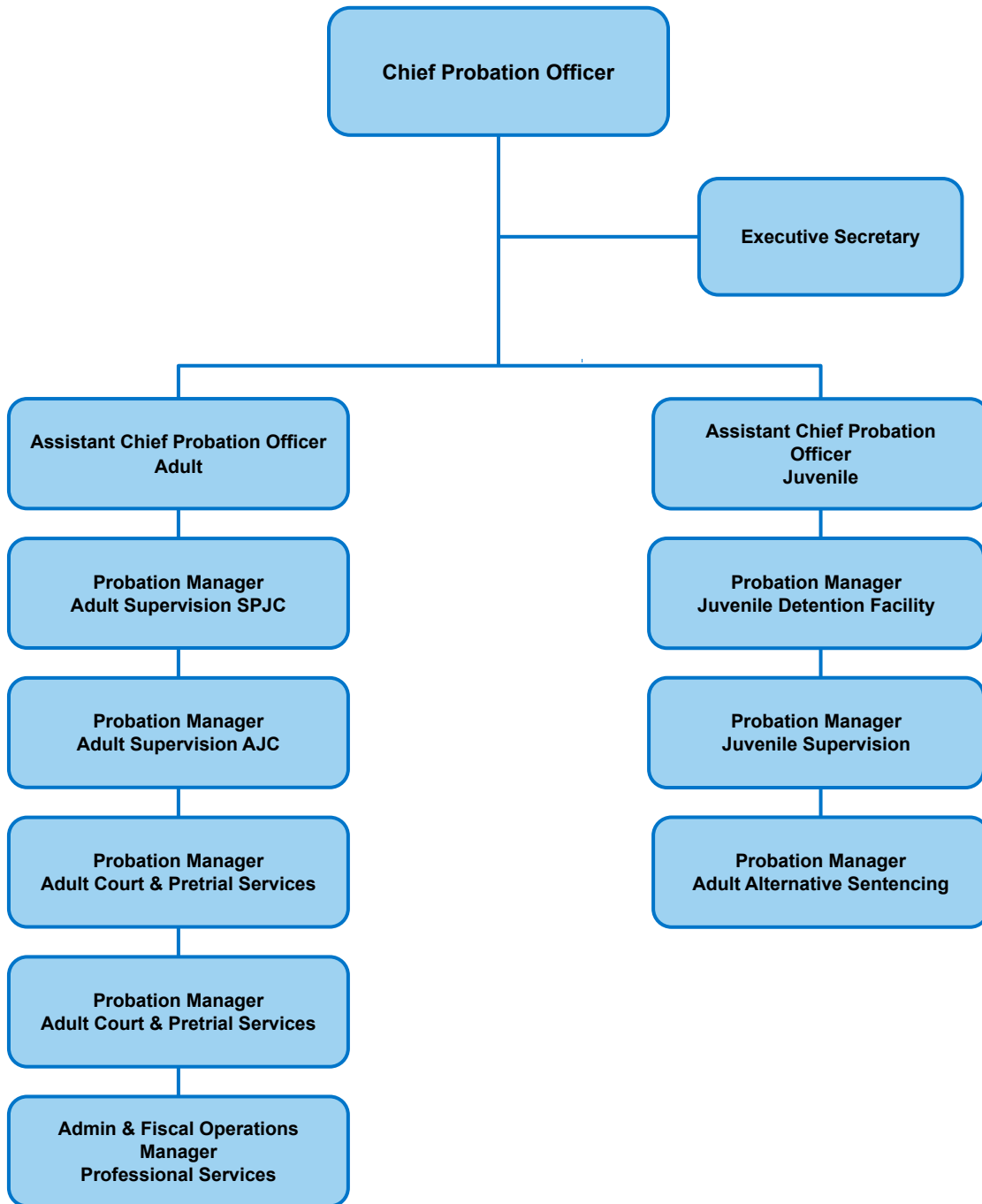
**Mission Statement:**

The mission of the Probation Department is to promote the safety of the citizens of Placer County by conducting investigations for the court, enforcing court orders, ensuring victims’ rights, engaging in crime prevention partnerships, and facilitating the resocialization of offenders through the use of evidence-based supervision and best practices.

**Probation  
Cost Center Summary  
Fiscal Year 2021-22**

Cost Center	FY 2019-20 Actuals	FY 2020-21 Adopted Budget	FY 2021-22 Recommended Budget	FY 2021-22 Adopted Budget	YOY % Change
<b>Public Safety Fund</b>					
Probation	\$ 31,112,985	\$ 33,791,039	\$ 34,030,324	\$ 34,030,324	0.71%
<b>Funded Positions</b>					
Probation	149	149	149	149	0%
<b>Total Funded Positions</b>	<b>149</b>	<b>149</b>	<b>149</b>	<b>149</b>	<b>0.00%</b>
<b>Total Allocated Positions</b>	<b>152</b>	<b>149</b>	<b>149</b>	<b>149</b>	<b>0.00%</b>

### Probation



**Purpose:**

The Probation Department’s adult services are organized to provide a continuum of services for adults at all stages of the criminal justice system, from Court Services, Pre-Trial Services, Alternative Sentencing, Placer Re-Entry Program (PREP) and Community Supervision. Under the auspices of these five programs fall different services designed to assist the Court, redirect and supervise appropriate offenders in the community, hold offenders accountable, while redirecting behavior and providing safety to the community.

The Probation Department’s juvenile services are organized to provide a continuum of services for youth at all stages of the criminal justice system, from early Delinquency/ Crime Prevention, Court Services, Detention and Treatment Services, and Supervision Services. Under the auspices of these four programs fall different services designed to redirect behavior, provide accountability, promote family reunification and provide safety to the community.

**Major Budget Adjustments and Initiatives:**

- None.

Program Title	Program Description	Program Cost
Adult Probation Court Services	The selection of an appropriate sentence is one of the most important decisions to be made in the criminal justice system. Court Services supports the goal of assisting judicial officers in making sentencing decisions and assists corrections and community corrections officials in supervising defendants. Court Services are State mandated and consist of Probation Officers preparing written reports for the Court by conducting a factual and thorough investigation into a defendant’s behavior, history, assets, impact on victims, mitigating and aggravating circumstances, assessing future risk and identifying needs to reduce reoffending behavior. Additionally, these reports provide judicial officers with reasoned sentencing options which conform to statutory and Case Law requirements. These reports include the terms and conditions of probation, if eligible, to promote accountability and community safety, and rehabilitation for the offender utilizing evidence-based programming. Through the Court process, Probation works to ensure victims’ rights and establish victim restitution. Beginning in January 2020, reports now include an additional, post-conviction, mandated report as a result of Prop 63. It is now critical that Probation complete Prop 63 time sensitive reports or risk a delay in sentencing of offenders and/or a negative impact on Court calendars.	\$ 2,692,145
Adult Probation Pretrial Services	Pretrial Services assists the Superior Court and provides community supervision to defendants pending legal proceedings. Pretrial Services performs multiple functions which are critical to the effective operation of our local criminal justice system, by assisting the court in making prompt, fair and effective release/detention decisions utilizing a risk assessment which is designed to be predictive of an individual’s failure to appear in court and potential for re-arrest while on pretrial status. Specific service modes include: Supervised Release and Home Confinement with Electronic Monitoring (GPS). Probation Officers enforce the terms and conditions of release that may include: making court appearances, abstaining from the use of alcohol and drugs, search and seizure, and stay away orders from victims.	\$ 1,240,736
Adult Probation Alternative Sentencing	Alternative Sentencing services create and maintain community-based alternatives to incarceration. Programs are designed to hold offenders accountable while promoting public safety in the community. Offenders complete their Court ordered sentence under direct Probation Officer supervision while maintaining family structure, retaining employment and housing, obtaining rehabilitative services, and continuing positive ties to the community. Specific service modes for post-conviction participants include: Electronic Monitoring (GPS), Work Release, Drug Court and Adult Placement. Probation Officers enforce program conditions that may include: abstaining from the use of drugs and alcohol, search and seizure, stay away orders from victims, monitoring and tracking community worksites, counseling programs, as well as monitoring offenders participating in residential drug treatment programs.	\$ 3,229,764
Placer Re-Entry Program	Probation and its partners provide evidence-based services through the innovative Placer Re-Entry Program (PREP) to offenders both in and out of custody in an effort to increase community safety. The Probation Department provides programming and services at multiple locations to 200 offenders in custody and 400 re-integrating back into the community. In 2019, Probation began collaborating with the California Department of Corrections and Rehabilitation expanding re-entry services provided in Placer County. In Fiscal Year 2021, Probation expects to further collaborate with SCOE to expand PREP services to clients in the North Lake Tahoe area. The Probation Department provides clients instruction in cognitive behavioral change, parenting and substance abuse education. Additionally, partnerships were established with other governmental and community-based organizations to provide GED preparation classes, vocational training, child support payment information, batterer’s treatment programming and literacy education, in an effort to increase program participants’ positive community and natural supports.	\$ 1,169,891

Program Title	Program Description	Program Cost
Adult Probation Community Supervision Services	<p>Community Supervision provides structure and accountability for those offenders released back into our community after being granted formal probation or released under Parole Realignment (Post Release Community Supervision/Mandatory Supervision). Probation Officers promote public safety by supervising offenders in the community and ensure compliance with the terms and conditions of release. Officers also complete risk and needs assessments and develop collaborative case plans based on these assessments. Officers use evidence-based supervision and treatment practices to include linking offenders to community-based organizations and integrated service partners, providing Re-Entry Programming, vocational training and wraparound supervision and support to reduce recidivism and incarceration. Specific service modes for offenders under community supervision include: risk based offender supervision, DUI, Domestic Violence, Transient and Sex Offender caseloads. Offenders identified to pose the greatest risk to public safety are placed on a specialized joint task force caseload (Special Investigations Unit) comprised of multiple local law enforcement agencies. Additionally, our officers work collaboratively with Federal, State and local law enforcement agencies conducting operations to suppress gang, narcotic, DUI, violent and sex offender criminal conduct. They also track down and arrest absconded offenders, holding them accountable, bringing them back before the justice system. Probation Officers enforce court orders through office contacts, random unannounced home visits, drug and alcohol testing, tracking and monitoring, evidence based programming, DUI terms, Sex Offender terms, Elder Abuse terms, Domestic Violence terms, weapon prohibitions, stay away orders for victims, and the collection of victim restitution. Grant funding from Proposition 47 has allowed for the creation of an integrated multi-disciplinary team to provide Wraparound supervision and support for moderate to high risk clients experiencing mental health and/or substance abuse issues.</p>	\$ 8,709,823
Juvenile Probation Delinquency / Crime Prevention Services	<p>Delinquency/Crime Prevention Services include diversion services that target youth who are beyond parental control or are otherwise at risk of delinquency. Diversion Programs include: Citation and Traffic Hearings; Evidence Based Programs; the Placer County Sheriff's Activities League; School Attendance Mediation; Informal Probation to ensure victim restitution or Community Service is completed; and the Crisis Resolution Center. Additionally, the Juvenile Division provides access to structured community resources that assist youth and family members to build and utilize their own family resources and better equip them to become independent of the Juvenile Justice or Child Welfare Systems.</p>	\$ 1,030,165
Juvenile Probation Court / Pre-Adjudication Services	<p>Court Services are State mandated and consist of Probation Officers preparing written reports with information on a youth's family and educational background, any prior probation history, previous arrest history and other relevant information. These investigations and reports assist the Superior Court Judges in making informed dispositional decisions. This report includes the Probation Officers' dispositional recommendations, including the terms and conditions of probation, to provide rehabilitation for the youth utilizing evidence-based programming, and accountability to insure community safety. Through the Court process, Probation works to ensure victim rights and establish victim restitution. The Probation Officers also complete the evidence-based risk and needs assessment, designed to create and implement case plans focused on addressing the youth's identified behavioral indicators in addition to social and educational needs. Alternative disposition pre-adjudication supervision services allow the youth to be placed on any of several different programs in lieu of, or in addition to, confinement. These options include: home supervision, and electronic (GPS and/or alcohol) monitoring. Alternatives to confinement may be employed while awaiting further Court hearings, or as a tool to hold youth accountable while encouraging the development needed to support success.</p>	\$ 1,118,960
Juvenile Probation Detention and Treatment Services	<p>The 78 bed Juvenile Detention Facility (JDF) is a State mandated 24-hour secure detention facility housing male and female youth for their safety and public safety, who are pending court, sentenced or awaiting placement. The facility also houses youth who have been charged as adults. Programming within the facility includes education, health, mental health, social awareness, and special programs. Programming is designed to enhance safety and security, while providing youth opportunities and direction to change their behavior in order to promote successful transition back into the community and reunification with their families. These programs are taught by contracted providers, volunteers and probation staff. Youth may be ordered to be placed out of their home by the Superior Court into a group home or boot camp for supervision, behavior modification and treatment. Probation Officers are mandated by Federal and State government regulation to have in person contact with these youth on a monthly basis. These costly, out of home placements are a last resort and often avoided by the array of interventions employed by the Probation Department and partner agencies.</p>	\$ 7,156,382

continued

Program Title	Program Description	Program Cost
Juvenile Probation Supervision Services	<p>Probation Officers assigned to Supervision Services monitor youth placed on probation supervision in the community. Youth who have been placed on probation supervision receive a risk and needs assessment to determine the type and level of service needed and are then supervised based on their individualized case plan. Probation Officers promote public safety by supervising youth in the community and ensuring compliance with the terms and conditions of probation which may include: enforcing curfews, school attendance, substance abuse counseling, drug and alcohol testing, gang conditions, stay away orders for victims, and the collection of victim restitution. Officers use evidence-based supervision and treatment practices, including safety and behavioral plans, to improve the likelihood of successful transition of youth back into our communities. Supervision Services maintain risk-based supervision caseloads including: Wraparound Services and Juvenile Drug Court in lieu of out of home placement.</p>	\$ 1,736,333
Administrative Leadership	<p>The Placer County Probation Department has staff located in six County facilities, as well as in the offices of four local law enforcement agencies. Administrative Leadership captures the costs of Executive Leadership, as well as operating costs not easily attributed to any single program as listed above. Executive Leadership includes our Chief Probation Officer and two Assistant Chief Probation Officers (one responsible for adult operations and the other for juvenile operations). Our Executive Leadership has final responsibility for all members of our Department and their actions. Our Executive Leadership promote the safety of the citizens of Placer County by ensuring our staff facilitate the resocialization of offenders through the use of evidence-based supervision and best practices. In addition to Executive Leadership, the costs of fiscal support (budgeting and fiscal monitoring, grants management, accounts payable, receivables and payroll), information technology support (including desktop support, database management and outside agency systems coordination), data research and validation (used to provide metrics associated with specific programs and their effectiveness), and clerical support. Building costs, including lease costs, utilities and associated expenses for facilities housing multiple programs are included within this program.</p>	\$ 5,946,125

**County of Placer**  
**Financing Sources and Uses by Budget Unit by Object**  
**Governmental Funds**  
**Fiscal Year 2021-22**

**Budget Unit: Public Safety Fund**  
**Function: Reporting Public Protection**  
**Cost Center: CC18001 Probation**

Detail by Revenue Category and Expenditure Object	2019-20 Actuals	2020-21 Adopted Budget	2021-22 Recommended Budget	2021-22 Adopted Budget
1	2	3	4	5
<b>Revenue</b>				
Other Fees and Charges	14,783	-	-	-
Fair Market Value Adjustment	1,008	-	-	-
Law Enforcement Services	157,610	250,000	-	-
Institutional Care and Services	524,717	450,000	-	-
Other Court Fines	142,041	-	-	-
Forfeitures and Penalties	-	5,000	5,000	5,000
State Aid - Other Programs	3,810,956	3,609,000	3,985,808	3,985,808
Federal Aid - Other Programs	649,172	785,000	610,000	610,000
State Aid - Public Safety Services-Proposition 172	5,960,764	6,328,120	6,746,722	6,746,722
Aid from Other Placer County	(43,371)	-	-	-
State Aid - Sales Tax Realignment for Public Safety	2,526,536	2,522,721	2,600,914	2,600,914
Insurance - Other	-	10,000	10,000	10,000
Miscellaneous	452	10,000	10,000	10,000
Investment Income	(3,656)	700	-	-
Contributions from General Fund	18,500,000	19,820,485	20,061,874	20,061,874
Operating Transfers In	2,251	-	-	-
<b>Total Revenue</b>	<b>\$ 32,243,262</b>	<b>\$ 33,791,026</b>	<b>\$ 34,030,318</b>	<b>\$ 34,030,318</b>
<b>Expenditures / Appropriations</b>				
Clothing and Personal	11,776	12,272	12,000	12,000
Communication Services Expense	320,522	165,842	278,360	278,360
Comp for Absence - Illness	594	-	-	-
Employee Group Insurance	2,177,352	2,318,240	2,400,745	2,400,745
Equipment	45,970	100,000	15,000	15,000
Food	139,263	158,723	206,901	206,901
Maintenance - Janitorial	148,911	-	-	-
Household Expense	7,698	5,000	8,000	8,000
Refuse Disposal	111	-	-	-
Insurance	121,444	112,355	119,669	119,669
Transfer Out A-87 Costs	1,221,736	1,455,456	1,355,766	1,355,766
Intra Fund Services	251,513	146,867	-	-
Maintenance - Building	-	-	735,490	735,490
Training / Education	300	-	-	-
Taxes and Assessments	2,363	-	-	-
Buildings & Improvements	-	-	30,000	30,000
Intrafund Transfers / Services Out	-	-	1,102,889	1,102,889
Intrafund Transfers / Services In (Contra Expense)	-	-	(964,951)	(964,951)
Fuels & Lubricants	5,110	5,000	5,500	5,500
Parts	9,279	2,000	3,000	3,000
Campus Services - PCGC	18,704	-	-	-
Maintenance	52,243	11,000	180,000	180,000

continued

Detail by Revenue Category and Expenditure Object	2019-20	2020-21	2021-22	2021-22
	Actuals	Adopted Budget	Recommended Budget	Adopted Budget
1	2	3	4	5
Drug & Alcohol Testing	56,401	70,000	60,000	60,000
Professional / Membership Dues	10,807	12,000	16,000	16,000
Small Tools & Instruments	180	-	-	-
School/Other Agency Expenditures	1,758	13,000	6,000	6,000
Misc Expense	643	9,000	5,000	5,000
Other Supplies	68,832	53,017	66,134	66,134
Printing	62,542	-	65,983	65,983
Procurement Card Purchase / Clearing Account	62	-	-	-
Postage	27,639	15,751	37,524	37,524
Operating Materials	1,763	-	-	-
Professional and Special Services - Health	5,950	-	-	-
Professional and Special Services - General	1,653,055	3,088,986	3,205,198	3,205,198
Professional and Special Services - Technical, Engineering and Environmental	457,489	619,264	-	-
Professional and Special Services - Information Technology	996,650	1,434,253	1,373,059	1,373,059
Professional and Special Services - County	39,173	201,301	-	-
Rents and Leases - Buildings & Improvements	39,700	65,000	67,500	67,500
Rents and Leases - Equipment	-	175,000	-	-
Payroll Tax	993,822	984,396	990,443	990,443
Retirement	4,973,237	5,543,668	6,372,518	6,372,518
Other Postemployment Benefits (OPEB)	1,043,184	1,016,927	639,210	639,210
401 (k) Employer Match	3,839	7,503	7,501	7,501
Sick Leave Payoff	16,693	141,000	15,000	15,000
Cafeteria Plans (Non-PERS)	565,111	622,629	621,913	621,913
Uniform Allowance	136,869	103,513	136,515	136,515
Employee Paid Sick Leave	36,318	15,000	22,100	22,100
Extra Help	-	240,000	250,000	250,000
Taxable Meal Reimbursements	-	5,000	3,000	3,000
Overtime and Call Back	369,587	375,000	433,026	433,026
Salaries and Wages	12,528,360	12,955,343	13,020,834	13,020,834
Salary Savings	-	(935,728)	(972,976)	(972,976)
Special Department Expense	5,763	35,000	45,000	45,000
Law Enforcement Special Expenses	329,481	25,000	10,000	10,000
PC Acquisition	111,711	-	4,000	4,000
Safety Clothing - Other Agency	-	5,000	5,000	5,000
Small Equipment	8,265	-	-	-
Employee Benefits Systems	185,844	187,560	186,146	186,146
Support and Care of Persons	809,050	700,000	750,000	750,000
Operating Transfer Out	(7,528)	-	-	-
Transportation and Travel	407,121	433,162	468,374	468,374
Countywide Systems Charges	-	-	-	-
Project Costs	-	437,804	30,000	30,000
Contrib Auto Working Capital	-	-	37,538	37,538
Utilities	274,221	302,047	261,528	261,528
Workers Comp Insurance	364,505	341,888	302,887	302,887
<b>Total Expenditures / Appropriations</b>	<b>\$ 31,112,985</b>	<b>\$ 33,791,039</b>	<b>\$ 34,030,324</b>	<b>\$ 34,030,324</b>
<b>Total</b>	<b>\$ 1,130,278</b>	<b>\$ (13)</b>	<b>\$ (6)</b>	<b>\$ (6)</b>