

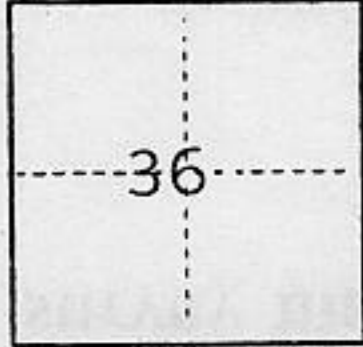
(For County Use Only)

CORNER RECORD

COUNTY OF Placer T. 15 N. R. 16 E. M.D. MERIDIAN CALIFORNIA

CORNER TYPE: GOV'T. CORNER MEANDER RANCHO CONTROL OTHER

CORNER IDENTIFICATION — DATE OF VISIT October 23 1992



SE corner of Lot 4 of Tahoe Swiss Village Tract No. 2 as filed in Book F of Maps at Page 49, Placer County Records (corner destroyed by bike path)

CORNER — LEFT AS FOUND FOUND AND TAGGED REESTABLISHED OBLITERATED CORNER REBUILT

PHYSICAL DESCRIPTION OF CORNER FOUND; EVIDENCE AND METHOD USED TO IDENTIFY OR REESTABLISH

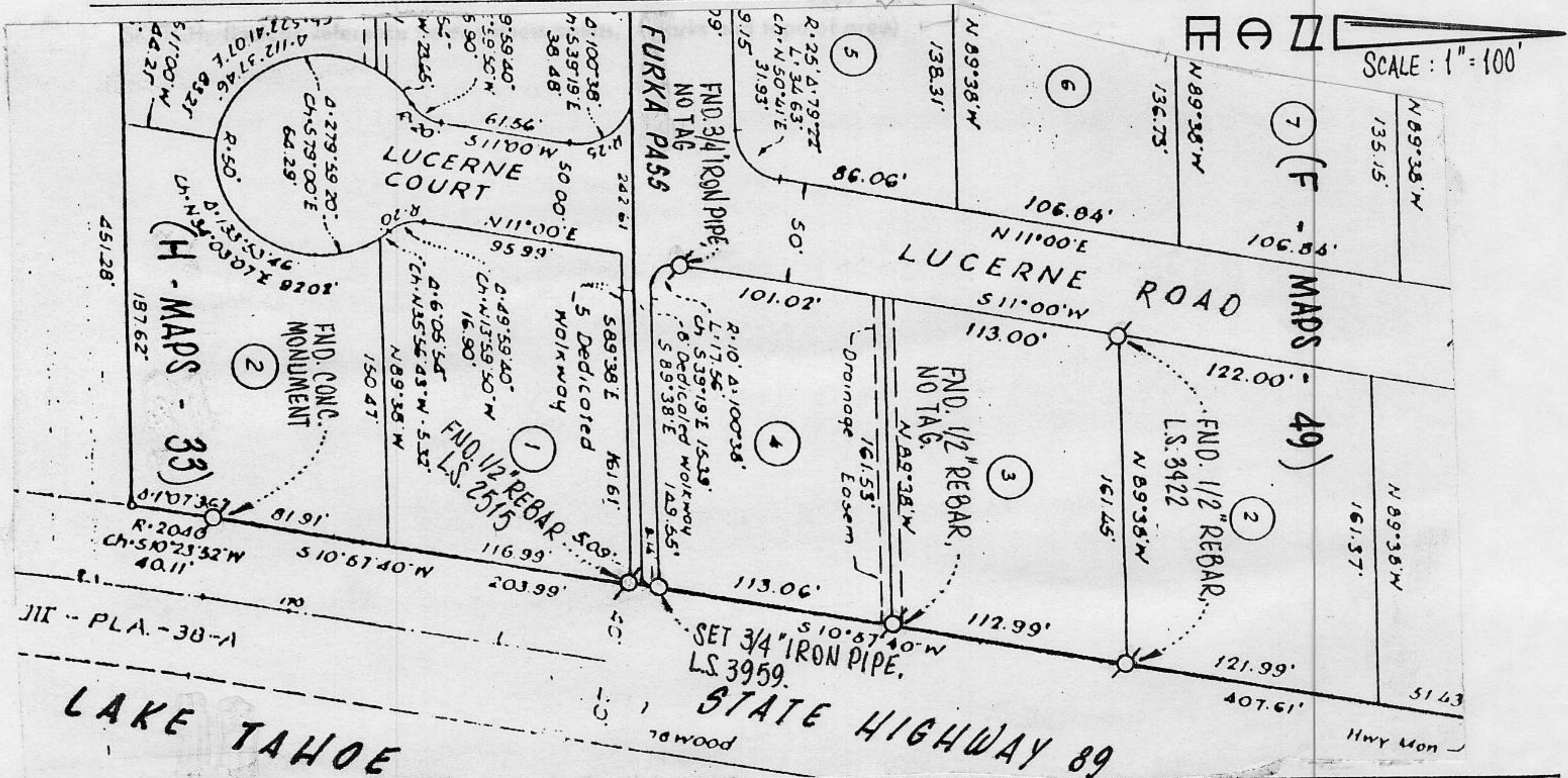
Found monuments as shown below per Book F of Maps at Page 49 and Book H of Maps at Page 33.

PHYSICAL DESCRIPTION OF MONUMENTS REBUILT OR PERPETUATED

Set 3/4" iron pipe, tagged LS 3959, flush to the surface of the bike path pavement.

CALIFORNIA COORDINATE SYSTEM ORDER: FIRST SECOND THIRD
STATIONS USED: NGS (USC & GS) STATE COUNTY OTHER STATION _____ STATION _____
ZONE _____ ELEVATION _____ NORTHINGS (Y) _____ EASTINGS (X) _____

(Fold)

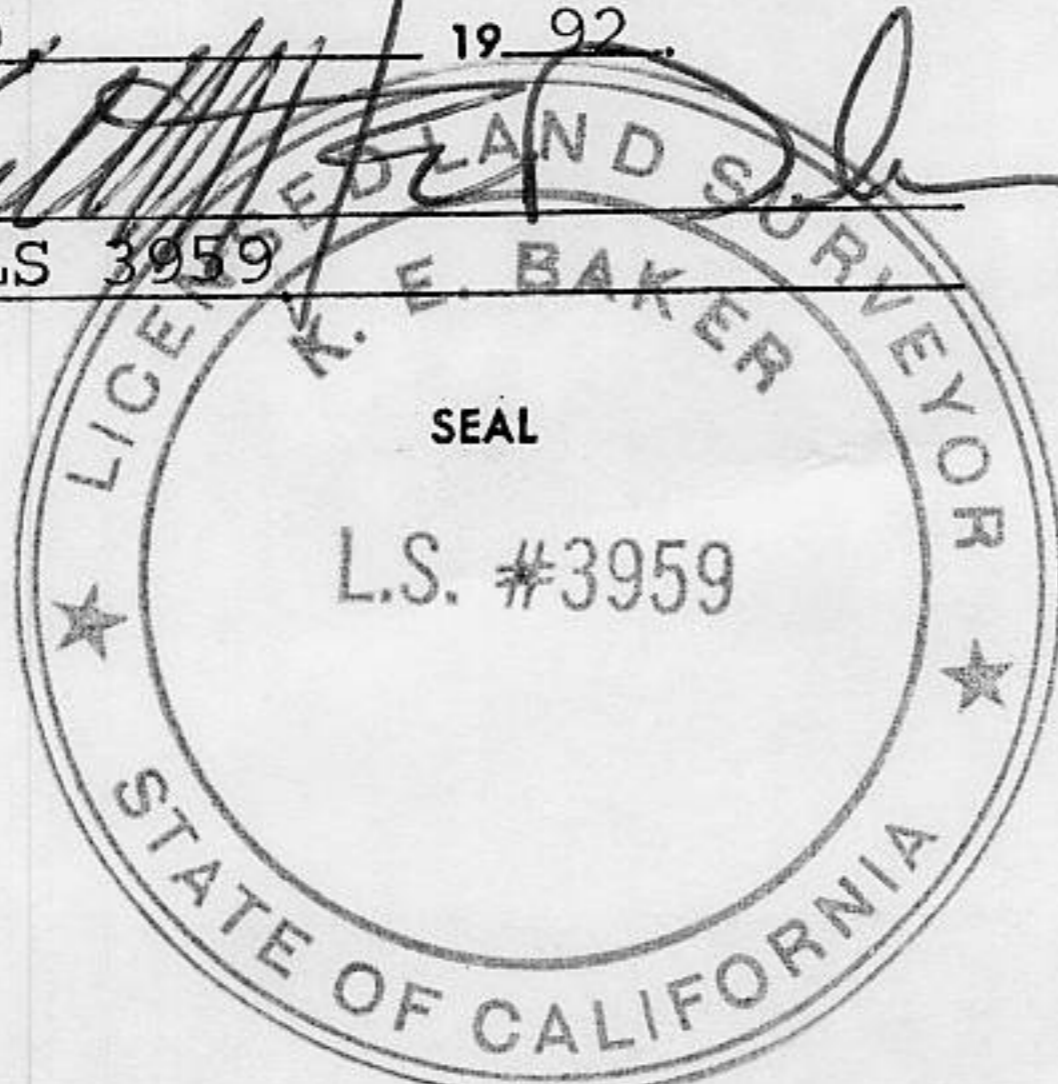


Book 3, Corner Records, Page 117

SURVEYOR'S CERTIFICATE

THIS CORNER RECORD WAS PREPARED BY ME OR UNDER MY DIRECTION IN CONFORMANCE WITH THE LAND SURVEYORS ACT ON October 29 1992.

SIGNED: [Signature]
L.S. or R.C.E. No.: LS 3959



COUNTY SURVEYOR'S CERTIFICATE

THE CORNER RECORD WAS RECEIVED _____ 19____
AND EXAMINED AND FILED 1/4 1993
BY: Dani L. McDaniel
TITLE: DEPUTY COUNTY SURVEYOR

DOCUMENT No. _____
STATEMENT ON BACK OF SHEET

YES NO

LAKE TAHOE