

# CORNER RECORD

COUNTY OF PLACER T. 16 N R. 17 E M.D.B. MERIDIAN CALIFORNIA

CORNER TYPE: GOV'T. CORNER  MEANDER  RANCHO  CONTROL  OTHER   
 CORNER IDENTIFICATION - DATE OF VISIT MAY 11, 19 92



LOTS 70 & 71 KINGSWOOD ESTATES UNIT No. 1, BK. "I" MAPS PG. 11

CORNER - LEFT AS FOUND  FOUND AND TAGGED  REESTABLISHED OBLITERATED CORNER  REBUILT

PHYSICAL DESCRIPTION OF CORNER FOUND: EVIDENCE AND METHOD USED TO IDENTIFY OR REESTABLISH

● FOUND 1/2" φ REBAR, NO TAG

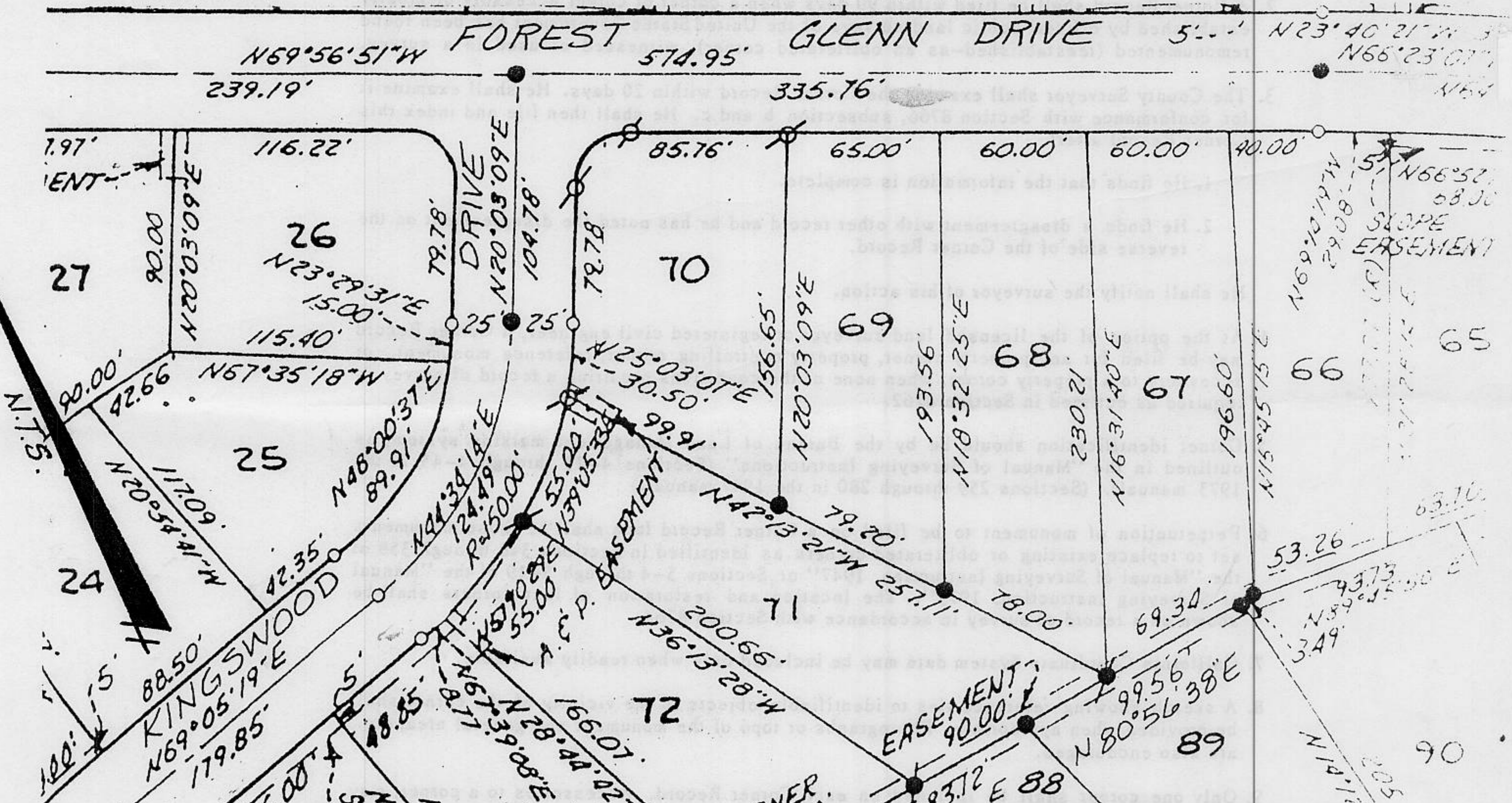


PHYSICAL DESCRIPTION OF MONUMENTS REBUILT OR PERPETUATED

♂ SET 5/8" φ REBAR, L.S. 5886

● RESET 5/8" φ REBAR, L.S. 5886

CALIFORNIA COORDINATE SYSTEM ORDER: FIRST  SECOND  THIRD   
 STATIONS USED: NGS (USC & GS)  STATE  COUNTY  OTHER  STATION \_\_\_\_\_ STATION \_\_\_\_\_  
 ZONE \_\_\_\_\_ ELEVATION \_\_\_\_\_ NORTHINGS (Y) \_\_\_\_\_ EASTINGS (X) \_\_\_\_\_



SURVEYOR'S CERTIFICATE

THIS CORNER RECORD WAS PREPARED BY ME OR UNDER MY DIRECTION IN CONFORMANCE WITH THE LAND SURVEYORS ACT ON MAY 30 19 92

SIGNED: [Signature]

L.S. or R.C.E. No.: LS 5886

SEAL

COUNTY SURVEYOR'S CERTIFICATE

THIS CORNER RECORD WAS RECEIVED 1/25 19 93  
 AND EXAMINED AND FILED 1/29 19 93

BY John Rutgers  
 TITLE: DEPUTY COUNTY SURVEYOR

DOCUMENT No. \_\_\_\_\_  
 STATEMENT ON BACK OF SHEET

YES  NO

Book 3, Corner Records Page 127